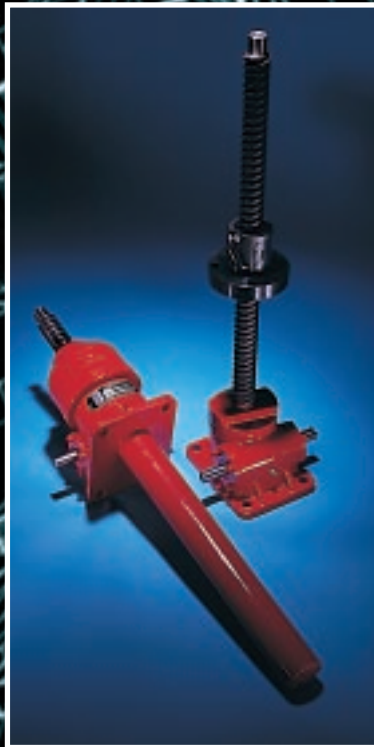




# POWER JACKS

Manufacturers and European Distributors of **Duff-Norton**® Actuators



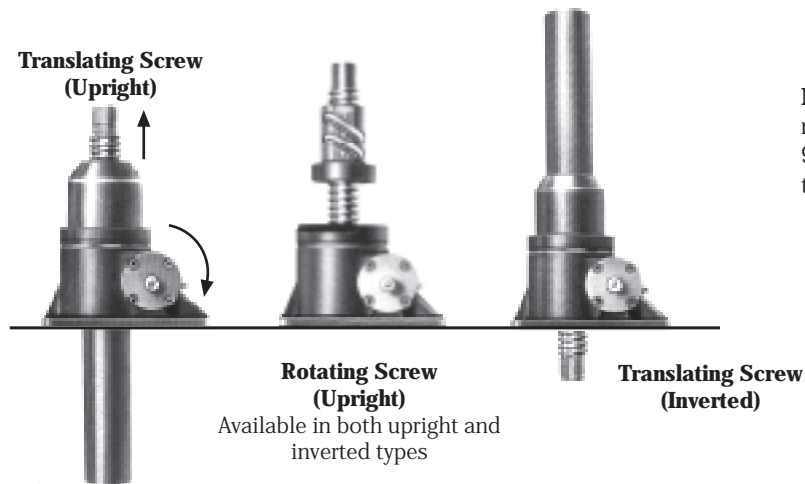
## Duff-Norton® BALL SCREW ACTUATORS



# BALL SCREW ACTUATORS

*Ball Screw Actuators*

## Ball Screw Actuator Models



**Note:-** A brake is required on 2800 and 9800 actuator units due to their high efficiency.

**Note:- Translating screw models covered by U.S. Patent No. 3,178,958**

Clockwise rotation of worm raises load on all models except 50 ton ball screw actuator - counter clockwise available at extra charge.

The lifting screw end should be bolted to the lifting member to prevent the screw from rotating.

Actuators are equipped with "Alemite" grease fittings.

Recommended lubricants are listed in the installation and maintenance instructions.

Actuators supplied complete with drive shaft keys.

Bellows Boot available on request.

## Performance of Standard Ball Screw Actuators

Model	Upright	28631	2802 & 9802*	28021 & 98021*	28003	2805	28051	2810	28101	2820	2825	2860
	Inverted	28630	2801 & 9801*	28011 & 98011*	28002	2804	28041	2809	28091	2819	2824	2859
Capacity (Short Tons)		0.5	2	2	3	5	5	10	10	20	25	50
Lifting Screw (Inches)	Diameter	5/8	1	1	1 11/64	1.5	1.5	1.5	1.5	2.25	3	4
	Lead	0.2	0.25	1	0.413	0.474	1	0.474	1	0.5	0.66	1
Worm Gear Ratios	Standard	5:1	6:1	6:1	6:1	6:1	6:1	8:1	8:1	8:1	10 2/3:1	10 2/3:1
	Option 1	20:1	24:1	24:1	24:1	24:1	24:1	24:1	24:1	24:1	32:1	32:1
	Option 2	-	12:1	12:1	12:1	-	-	-	-	-	-	-
Turns of Worm for 1" Raise	Standard	25	24	6	14.526	12.667	6	16.888	8	16	16.16	10.66
	Option 1	100	96	24	58.104	50.667	24	50.667	24	48	48.48	32
	Option 2	-	48	12	29.052	-	-	-	-	-	-	-
Maximum HP per actuator	Standard	1/3	2	2	2	4	4	5	5	5	8	15
	Option 1	1/6	1/2	1/2	1/2	3/4	3/4	1 1/2	1 1/2	1 1/2	2 1/2	6
	Option 2	-	3/4	3/4	3/4	-	-	-	-	-	-	-
Starting Torque at Full Load (in.lb)	Standard	10.5	50	180	110	220	500	350	800	700	925	2700
	Option 1	5	25	80	50	90	206	175	400	325	475	1500
	Option 2	-	30	135	68	-	-	-	-	-	-	-
Running Torque at Full Load (in.lb)	Standard	9.5	45	160	100	180	410	300	700	650	825	2200
	Option 1	4.5	20	70	45	80	183	150	290	300	425	1200
	Option 2	-	25	105	60	-	-	-	-	-	-	-
Efficiency Rating	Standard	0.67	0.59	0.66	0.66	0.70	0.65	0.63	0.57	0.61	0.60	0.68
	Option 1	0.35	0.33	0.38	0.37	0.39	0.36	0.42	0.46	0.44	0.39	0.41
	Option 2	-	0.53	0.51	0.55	-	-	-	-	-	-	-
Weight with Baise Raise of 6" (lbs)		2.75	20	20	21	40	40	50	50	115	235	520
Weight for each additional 1" Raise (lbs)		0.1	0.33	0.33	0.42	0.85	0.85	0.85	0.85	1.5	2.9	5
Hold Back Torque at Rated Load (ft.lb)	Standard	1	2	2	7	8	8	11	11	24	24	92
	Option 1	0.5	0.5	0.5	0.5	0.5	0.5	0.5	0.5	2	2	33
	Option 2	-	1	1	2	-	-	-	-	-	-	-

\*Dimension same as model 2802 and 9802.

**Note:-** Lifting screws listed above are not keyed. Must be held to prevent rotation. Hold Back Torque is restraining torque at the worm shaft to keep load from running down. Lifting torques are proportional to load, down to 25% of rated load.

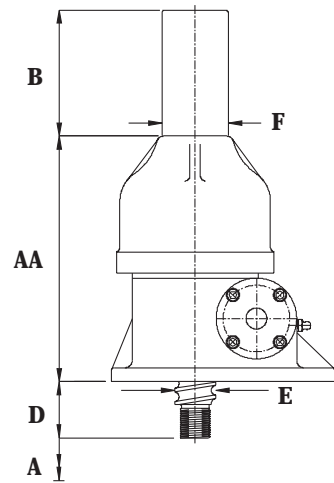
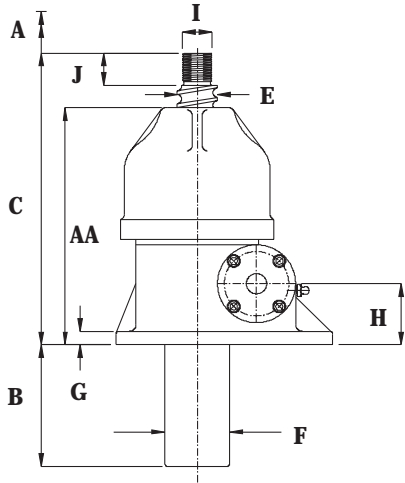




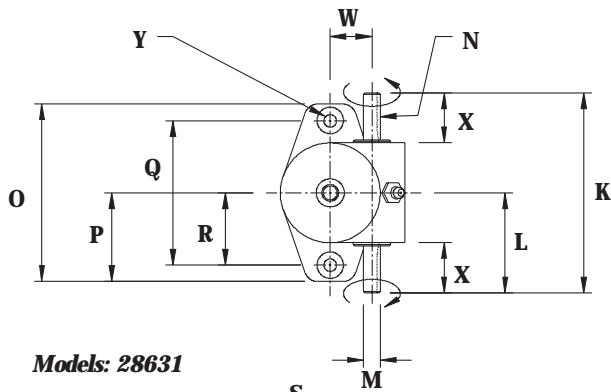
# BALL SCREW ACTUATORS

*Ball Screw Actuators*

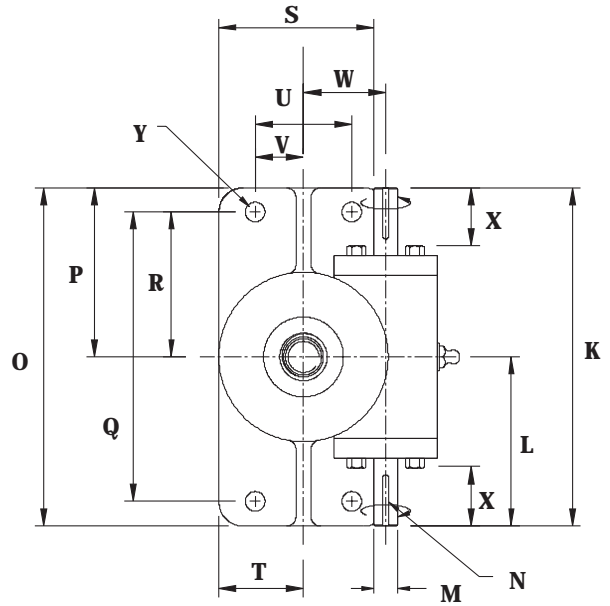
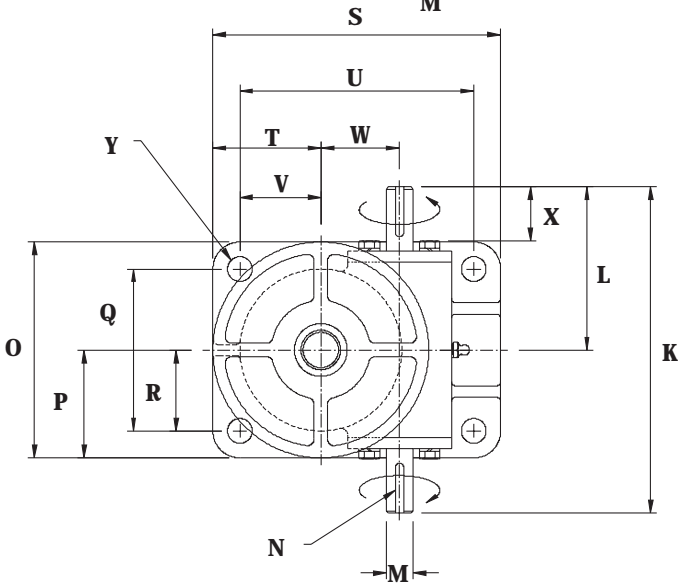
## Standard Translating Ball Screw Actuators



Plan View



Models: 28631



Models: 2802 28021  
28003 2860

Models: 9802 98021  
2805 28051  
2810 28101  
2820 2825

- Note:-** 1. All dimensions in inches (1" = 25.4 mm).  
2. Dimensions subject to change without notice.



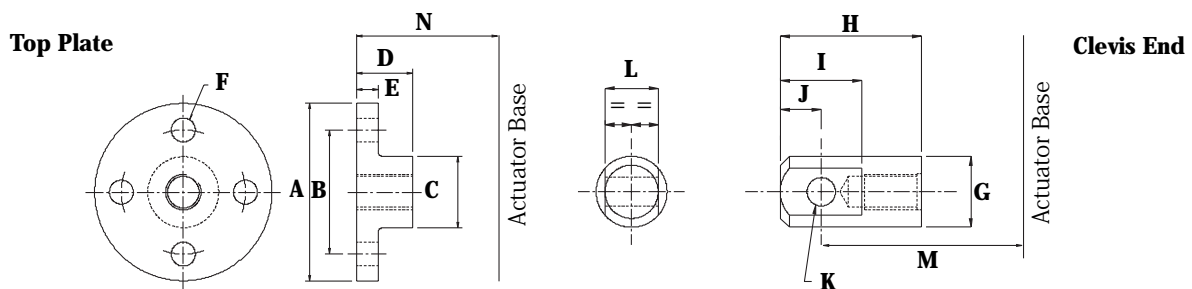


# BALL SCREW ACTUATORS

*Ball Screw Actuators*

Model Upright	28631	2802 & 28021	9802 & 98021	28003	2805 & 28051	2810 & 28101	2820	2825	2860
Inverted	28630	2801 & 28011	9801 & 98011	28002	2804 & 28041	2809 & 28091	2819	2824	2859
Capacity (Short Tons)	0.5	2	2	3	5	10	20	25	50
A	Raise As Required								
B	A + 1	A + 0.75	A + 0.75	A + 0.75	A + 2	A + 1	A + 0.75	A + 2	A + 2.75
C	5	7.5	7.5	9.25	10.75	10 3/8	16.5	19.75	25 3/8
D	1	1 3/8	1 3/8	1 3/8	1 3/8	1.5	2.75	3 1/8	3 5/8
E	5/8	1	1	1 11/64	1.5	1.5	2.25	3	4
F	1 1/16	1 21/32	1 21/32	1 21/32	2 3/8	2 7/8	3.5	4.5	5 9/16
G	5/16	0.5	0.5	0.5	0.5	0.5	0.75	1	1.25
H	1 ± 0.003	1.75 ± 0.005	1.75 ± 0.005	1.75 ± 0.005	2.25 ± 0.005	2.25 ± 0.005	3.25 ± 0.005	4 ± 0.005	4.75 ± 0.005
I	3/8-24UNF-2A	3/4-16UNF-2A	3/4-16UNF-2A	3/4-16UNF-2A	1-14UNS-2A	1-14UNS-2A	1.75-12UN-2A	2.25-12UN-2A	3.25-12UN-2A
J	0.75	1 1/8	1 1/8	1 1/8	1 1/8	1 1/8	2.25	2.25	2.75
K	4.5	7	7	7	9	11	11	14	22
L	2.25	3.5	3.5	3.5	4.5	5.5	5.5	7	11
M	0.375 / 0.373	0.500 / 0.498	0.500 / 0.498	0.625 / 0.623	0.749 / 0.747	0.999 / 0.997	1.000 / 0.998	1.375 / 1.373	1.500 / 1.498
N	1/8 X 1/6 X 3/4	1/8 X 1/16 X 1	1/8 X 1/16 X 1	3/16 X 3/32 X 1	3/16X3/32X1.25	1/4 X 1.8 X 1.5	1/4 X 1/8 X 1.5	5/16 X 5/32 X 2	3/8 X 3/16 X 2.25
O	4	7	4 1/8	7	6	7.5	8.25	10.25	19.75
P	2	3.5	2 1/16	3.5	3	3.75	4 1/8	5 1/8	9 7/8
Q	3.25	6	3 1/8	6	4.5	5.75	6	7.5	16
R	1 5/8	3	1 9/16	3	2.25	2 7/8	3	3.75	8
S	-	3.5	6 1/4	3.5	8	8.75	11	13.75	9.75
T	-	1.75	2 7/16	1.75	3	2 7/8	4 1/8	5 1/8	4 7/8
U	-	2	5 1/4	2	6.5	7	8.75	11	6
V	-	1	1 15/16	1	2.25	2	3	3.75	3
W	0.941 / 0.938	1.705 / 1.702	1.705 / 1.702	1.706 / 1.701	2.190 / 2.188	2.601 / 2.598	2.601 / 2.598	3.755 / 3.750	5.316 / 5.313
X	1 1/8	1 1/8	1 1/8	1 1/8	1.5	1.8	1.5	2 5/16	4 7/16
Y	9/32	13/32	13/32	13/32	11/16	13/16	1 1/8	1 3/8	1 7/8
AA	4	5 5/8	5 5/8	7.25	8.75	8 3/8	13	16.75	21 3/8

## Standard Translating Ball Screw Ends



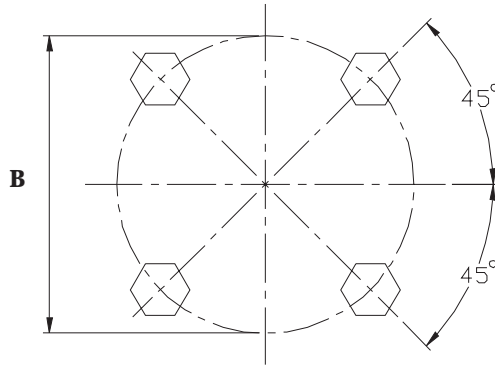
Model	28631	2802 & 28021	9802 & 98021	28003	2805 & 28051	2810 & 28101	2820	2825	2860
A	ø2.25	ø4.25	ø4.25	ø4.25	ø5	ø5.75	ø7	ø8.5	ø13
B	PCD 1.5	PCD 3	PCD 3	PCD 3	PCD 3.5	PCD 4.125	PCD 5	PCD 6	PCD 10
C	Ø0.75	Ø1.5	Ø1.5	Ø1.5	Ø1.75	Ø1.75	Ø2.625	Ø3.5	Ø4.5
D	13/16	1 13/16	1 13/16	1 13/16	1.25	1.375	2 5/16	2 5/16	2 13/16
E	5/16	7/16	7/16	7/16	0.625	0.75	1	1	1.375
F	Ø9/32	Ø13/32	Ø13/32	Ø13/32	Ø11/16	Ø13/16	Ø13/16	Ø1 1/16	Ø1.5
G	Ø0.75	Ø1.5	Ø1.5	Ø1.5	Ø1.75	Ø2	Ø2.625	Ø3.5	Ø5
H	2.25	3	3	3	4.125	4.125	6.25	8.25	9.125
I	1	1.5	1.5	1.5	2.5	2.5	3	5	5.25
J	0.5	0.75	0.75	0.75	1.25	1.25	1.5	2.5	2.625
K	Ø <sup>3</sup> /16	Ø <sup>1</sup> /2	Ø <sup>1</sup> /2	Ø <sup>1</sup> /2	Ø <sup>3</sup> /4	Ø1	Ø1 <sup>1</sup> /4	Ø1 <sup>1</sup> /2	Ø2
L	0.5	1	1	1	1.25	1.5	1.75	2.75	3.75
M	Upright	6	8 5/8	8 5/8	10 3/8	12 1/2	19	23 1/4	29 1/8
	Inverted	2	2 1/2	2 1/2	2 1/2	3 1/8	5 1/4	6 5/8	7 3/8
N	Upright	5	7 1/2	7 1/2	9 5/16	10 3/4	16 1/2	19 3/4	25 7/16
	Inverted	1 1/16	1 7/16	1 7/16	1 7/16	1 7/16	2 13/16	3 3/16	3 11/16



# BALL SCREW ACTUATORS

*Ball Screw Actuators*

## Standard Ball Screw Actuator Flange Bolt Configuration



Model	'B' Bolt P.C.D (inch)	Bolt Information
<b>28631</b>	-	No Flange Bolts
<b>2802 &amp; 9802</b>	1 <sup>11</sup> / <sub>16</sub>	<sup>1</sup> / <sub>4</sub> - 20 x <sup>3</sup> / <sub>4</sub> " Long
<b>28003</b>	1 <sup>11</sup> / <sub>16</sub>	<sup>1</sup> / <sub>4</sub> - 20 x <sup>3</sup> / <sub>4</sub> " Long
<b>2805</b>	2 <sup>3</sup> / <sub>8</sub>	<sup>5</sup> / <sub>16</sub> - 18 x <sup>3</sup> / <sub>4</sub> " Long
<b>2810</b>	2 <sup>3</sup> / <sub>4</sub>	<sup>5</sup> / <sub>16</sub> - 18 x <sup>3</sup> / <sub>4</sub> " Long
<b>2820</b>	3 <sup>1</sup> / <sub>2</sub>	<sup>3</sup> / <sub>8</sub> - 16 x 1 <sup>1</sup> / <sub>4</sub> " Long
<b>2825</b>	4 <sup>1</sup> / <sub>8</sub>	<sup>3</sup> / <sub>8</sub> - 16 x 1 <sup>1</sup> / <sub>4</sub> " Long
<b>2860</b>	5 <sup>1</sup> / <sub>4</sub>	<sup>5</sup> / <sub>8</sub> - 11 x 1 <sup>1</sup> / <sub>2</sub> " Long

- Note:-** 1. All dimensions in inches (1" = 25.4 mm).  
 2. Dimensions subject to change without notice.

## Life Expectancy of Ball Screw and Ball Nut

Predicting screw and nut life lets you forecast necessary replacement, saving time and money. It also permits selection of the most economical screw size.

Use caution when installing the ball screw. The life expectancy listed below may be greatly reduced if ball screws are subjected to misalignment, shock loads, side thrust, environmental contamination or lack of lubrication maintenance.

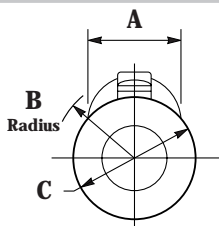
It is possible to estimate the minimum life of the Duff-Norton ball screw and nut only. Because of the many variable operating conditions, we can not accurately predict the life of the worm and gear set in the 2800 and 9800 Series actuators. Consult Power Jacks for advice.

### Life in Thousands of Inches Travelled

Model	28631	2802 & 9802	28021 & 98021	28003	2805	28051	2810	28101	2820	2825	2860
Capacity (Short Tons)	0.5	2	2	3	5	5	10	10	20	25	50
100% Full Load	400	50	125	250	1000	500	100	50	150	700	600
75% Full Load	1200	150	300	650	2500	1000	350	150	350	2000	1500
50% Full Load or Less	3500	500	1000	2200	9000	4000	1000	500	1200	6000	5000

**Note:-** 5 Ton and 10 Ton models use the same screw and nut.

## Ball Nut Return Tube Dimensions



Model	28631	2802 & 9802	28021 & 98021	28003	2805 & 2810	28051 & 28101	2820	2825	2860
Lead	0.200	0.250	1.000	0.413	0.474	1.00	0.500	0.660	1.000
A	0.822	1.104	1.104	1.587	1.981	1.718	2.561	3.349	4.029
B (Radius)	0.797	1.194	1.194	1.386	1.69	1.72	2.272	3.076	3.756
C	1	1.5	1.5	2.125	2.625	2.25	3.75	4.751	5.88
	Sq.	Sq.	Sq.	Dia.	Dia.	Sq.	Dia.	Dia.	Dia.

**Note:-** All dimensions in inches.





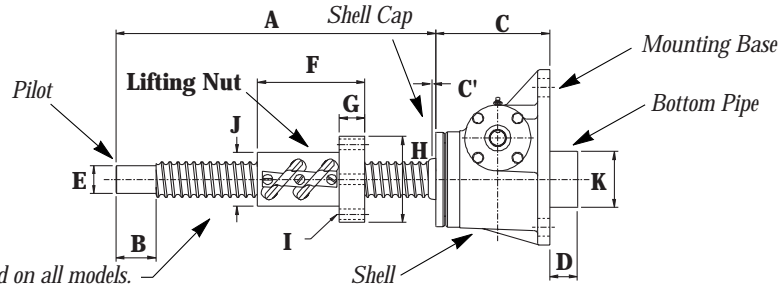
# BALL SCREW ACTUATORS

*Ball Screw Actuators*

## Standard Rotating Ball Screw Actuators

**Note:** - For all other dimensions and performance data refer to translating screw models. All dimensions in inches (1" = 25.4 mm).

### Upright Rotating Ball Screw Actuator

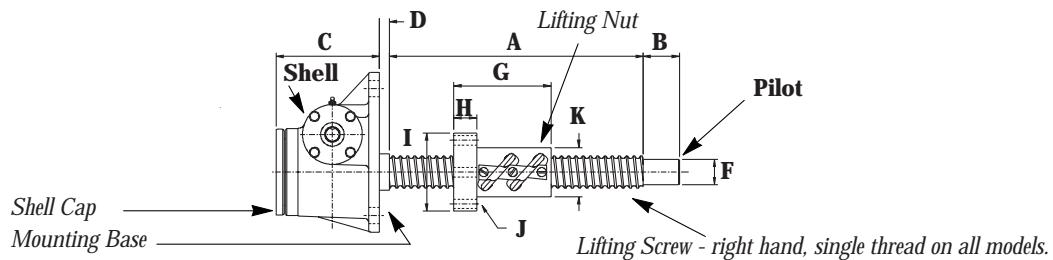


Lifting Screw - right hand, single thread on all models.

Model	UM 28632	KUM 2803	KUM 28031*	UM 9803	UM 98031*	KUM 28004	KUM 2806	KUM 28061*	UM 2811	UM 28111*	UM 2821	UM 2826	UM 2861*	
Capacity (Short Tons)	0.25	2	2	2	2	3	5	5	10	10	20	25	50	
A	Raise + 2	Raise + 3 1/16	Raise + 3 11/16	Raise + 3 1/16	Raise + 3 11/16	Raise + 3.75	Raise + 4 5/8	Raise + 4	Raise + 6	Raise + 5	Raise + 8	Raise + 10	Raise + 15	
B	0.625	1.125	1.125	1.125	1.125	1.125	1	1	1	1	2.5	2.25	3.25	
C	2 3/8	4 1/16	4 1/16	4 1/16	4 1/16	4 1/16	5 1/4	5 1/4	5 5/8	5 5/8	7 1/8	8 7/8	10 7/8	
C'	0	0	0	0	0	7/16	0	0	0	0	1	1 5/8	1 1/8	
D	0	0	0	0	0	0	0	0	0	0	0	0	0.75	
E	Dia.	0.437	0.750	0.750	0.750	0.750	1.000	1.000	1.000	1.000	1.750	2.250	3.250	
		0.435	0.748	0.748	0.748	0.748	0.748	0.998	0.998	0.998	0.998	1.748	2.248	3.248
F	1.75	2 3/8	3 1/32	2 3/8	3 1/32	3.395	4.33	3.65	4.33	3.65	6.706	9.395	12.625	
G	0.531	0.630	0.630	0.630	0.630	0.832	0.895	1.02	0.895	1.02	1.582	2.02	2.02	
H	Dia.	2.625	3.25	3.25	3.25	3.25	4.2	4 15/16	4 15/16	4 15/16	5.375	7.375	9.75	
		4	4	4	4	4	4	4	4	4	4	6	8	6
I	Dia.	17/64	17/64	17/64	17/64	17/64	25/64	17/32	17/32	17/32	21/32	25/32	1 1/32	
		2 3/32	2.75	2.75	2.75	2.75	3 7/16	4 1/16	4 1/8	4 1/16	4 1/8	4.375	6.25	8
J	Dia.	1 SQR.	1.5 SQR.	1.5 SQR.	1.5 SQR.	1.5 SQR.	2.125	2.625	2.25 SQR.	2.625	2.25 SQR.	3.375	4.751	5.88
K	Dia.	0	0	0	0	0	0	0	0	0	0	0	5.563	

\*1" Lead Screw Models.

### Inverted Rotating Ball Screw Actuator



Lifting Screw - right hand, single thread on all models.

Model	DM 28632	KDM 2803	KDM 28031*	KDM 9803	KDM 98031*	KDM 28004	KDM 28006	KDM 28061*	DM 2811	DM 28111*	DM 2821	DM 2826	DM 2861*	
Capacity (Short Tons)	0.25	2	2	2	2	3	5	5	10	10	20	25	50	
A	Raise + 2 3/8	Raise + 3	Raise + 3 5/8	Raise + 3 1/6	Raise + 3 5/8	Raise + 3.75	Raise + 4 5/8	Raise + 4	Raise + 6	Raise + 5	Raise + 8	Raise + 10	Raise + 15	
B	0.625	1.125	1.125	1.125	1.125	1.125	1	1	1	1	2.5	2.25	3.25	
C	2.375	3.75	3.75	3.75	3.75	3.75	5.25	5.25	5	5	7.125	8.875	11	
D	0	0.625	0.625	0.625	0.625	1	0.75	0.75	1.125	1.125	1.625	2.5	2.5	
F	Dia.	0.437	0.750	0.750	0.750	0.750	1.000	1.000	1.000	1.000	1.750	2.250	3.250	
		0.435	0.748	0.748	0.748	0.748	0.748	0.998	0.998	0.998	0.998	1.748	2.248	3.248
G	1.75	2 3/8	3 1/32	2 3/8	3 1/32	3.395	4.33	3.65	4.33	3.65	6.706	9.395	12.625	
H	0.531	0.630	0.630	0.630	0.630	0.832	0.895	1.02	0.895	1.02	1.582	2.02	2.02	
I	Dia.	2.625	3.25	3.25	3.25	3.25	4.2	4 15/16	4 15/16	4 15/16	5.375	7.375	9.75	
		4	4	4	4	4	4	4	4	4	4	6	8	6
J	Dia.	17/64	17/64	17/64	17/64	17/64	25/64	17/32	17/32	17/32	21/32	25/32	1 1/32	
		2 3/32	2.75	2.75	2.75	2.75	3 7/16	4 1/16	4 1/8	4 1/16	4 1/8	4.375	6.25	8
K	Dia.	1 SQR.	1.5 SQR.	1.5 SQR.	1.5 SQR.	1.5 SQR.	2.125	2.625	2.25 SQR.	2.625	2.25 SQR.	3.375	4.751	5.88

**Note:**- Dimensions subject to change without notice.

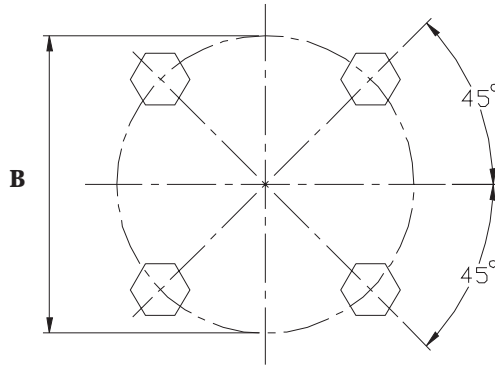
\*1" Lead Screw Models.



# BALL SCREW ACTUATORS

*Ball Screw Actuators*

## Standard Ball Screw Actuator Flange Bolt Configuration



Model	'B' Bolt P.C.D (inch)	Bolt Information
<b>28631</b>	-	No Flange Bolts
<b>2802 &amp; 9802</b>	1 <sup>11</sup> / <sub>16</sub>	<sup>1</sup> / <sub>4</sub> - 20 x <sup>3</sup> / <sub>4</sub> " Long
<b>28003</b>	1 <sup>11</sup> / <sub>16</sub>	<sup>1</sup> / <sub>4</sub> - 20 x <sup>3</sup> / <sub>4</sub> " Long
<b>2805</b>	2 <sup>3</sup> / <sub>8</sub>	<sup>5</sup> / <sub>16</sub> - 18 x <sup>3</sup> / <sub>4</sub> " Long
<b>2810</b>	2 <sup>3</sup> / <sub>4</sub>	<sup>5</sup> / <sub>16</sub> - 18 x <sup>3</sup> / <sub>4</sub> " Long
<b>2820</b>	3 <sup>1</sup> / <sub>2</sub>	<sup>3</sup> / <sub>8</sub> - 16 x 1 <sup>1</sup> / <sub>4</sub> " Long
<b>2825</b>	4 <sup>1</sup> / <sub>8</sub>	<sup>3</sup> / <sub>8</sub> - 16 x 1 <sup>1</sup> / <sub>4</sub> " Long
<b>2860</b>	5 <sup>1</sup> / <sub>4</sub>	<sup>5</sup> / <sub>8</sub> - 11 x 1 <sup>1</sup> / <sub>2</sub> " Long

- Note:-** 1. All dimensions in inches (1" = 25.4 mm).  
 2. Dimensions subject to change without notice.

## Life Expectancy of Ball Screw and Ball Nut

Predicting screw and nut life lets you forecast necessary replacement, saving time and money. It also permits selection of the most economical screw size.

Use caution when installing the ball screw. The life expectancy listed below may be greatly reduced if ball screws are subjected to misalignment, shock loads, side thrust, environmental contamination or lack of lubrication maintenance.

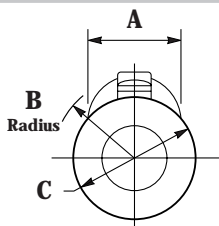
It is possible to estimate the minimum life of the Duff-Norton ball screw and nut only. Because of the many variable operating conditions, we can not accurately predict the life of the worm and gear set in the 2800 and 9800 Series actuators. Consult Power Jacks for advice.

### Life in Thousands of Inches Travelled

Model	28631	2802 & 9802	28021 & 98021	28003	2805	28051	2810	28101	2820	2825	2860
Capacity (Short Tons)	0.5	2	2	3	5	5	10	10	20	25	50
100% Full Load	400	50	125	250	1000	500	100	50	150	700	600
75% Full Load	1200	150	300	650	2500	1000	350	150	350	2000	1500
50% Full Load or Less	3500	500	1000	2200	9000	4000	1000	500	1200	6000	5000

**Note:-** 5 Ton and 10 Ton models use the same screw and nut.

## Ball Nut Return Tube Dimensions



Model	28631	2802 & 9802	28021 & 98021	28003	2805 & 2810	28051 & 28101	2820	2825	2860
Lead	0.200	0.250	1.000	0.413	0.474	1.00	0.500	0.660	1.000
A	0.822	1.104	1.104	1.587	1.981	1.718	2.561	3.349	4.029
B (Radius)	0.797	1.194	1.194	1.386	1.69	1.72	2.272	3.076	3.756
C	1	1.5	1.5	2.125	2.625	2.25	3.75	4.751	5.88
	Sq.	Sq.	Sq.	Dia.	Dia.	Sq.	Dia.	Dia.	Dia.

**Note:-** All dimensions in inches.





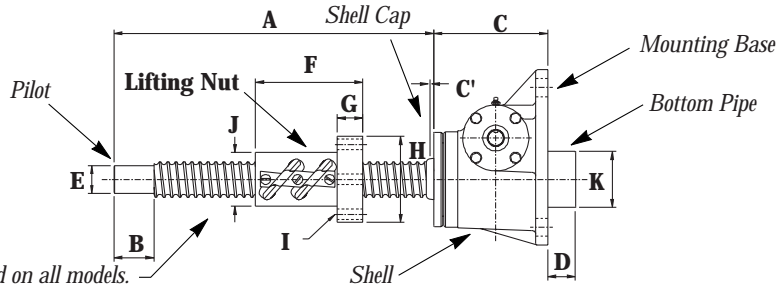
# BALL SCREW ACTUATORS

*Ball Screw Actuators*

## Standard Rotating Ball Screw Actuators

**Note:** - For all other dimensions and performance data refer to translating screw models. All dimensions in inches (1" = 25.4 mm).

### Upright Rotating Ball Screw Actuator

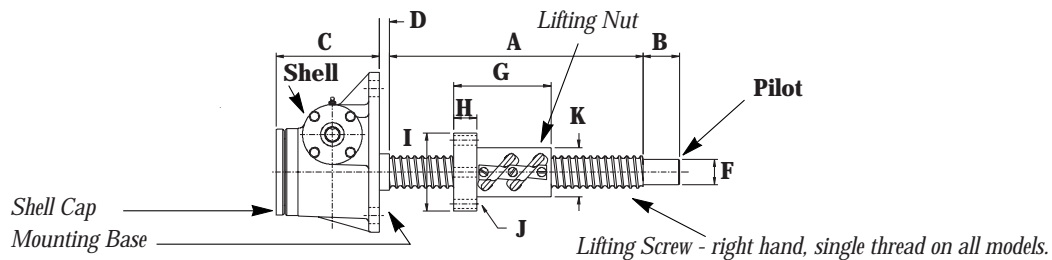


Lifting Screw - right hand, single thread on all models.

Model	UM 28632	KUM 2803	KUM 28031*	UM 9803	UM 98031*	KUM 28004	KUM 2806	KUM 28061*	UM 2811	UM 28111*	UM 2821	UM 2826	UM 2861*	
Capacity (Short Tons)	0.25	2	2	2	2	3	5	5	10	10	20	25	50	
A	Raise + 2	Raise + 3 1/16	Raise + 3 11/16	Raise + 3 1/16	Raise + 3 11/16	Raise + 3.75	Raise + 4 5/8	Raise + 4	Raise + 6	Raise + 5	Raise + 8	Raise + 10	Raise + 15	
B	0.625	1.125	1.125	1.125	1.125	1.125	1	1	1	1	2.5	2.25	3.25	
C	2 3/8	4 1/16	4 1/16	4 1/16	4 1/16	5 1/4	5 1/4	5 1/4	5 5/8	5 5/8	7 1/8	8 7/8	10 7/8	
C'	0	0	0	0	0	7/16	0	0	0	0	1	1 5/8	1 1/8	
D	0	0	0	0	0	0	0	0	0	0	0	0	0.75	
E	Dia.	0.437	0.750	0.750	0.750	0.750	1.000	1.000	1.000	1.000	1.750	2.250	3.250	
		0.435	0.748	0.748	0.748	0.748	0.748	0.998	0.998	0.998	0.998	1.748	2.248	3.248
F	1.75	2 3/8	3 1/32	2 3/8	3 1/32	3.395	4.33	3.65	4.33	3.65	6.706	9.395	12.625	
G	0.531	0.630	0.630	0.630	0.630	0.832	0.895	1.02	0.895	1.02	1.582	2.02	2.02	
H	Dia.	2.625	3.25	3.25	3.25	3.25	4.2	4 15/16	4 15/16	4 15/16	5.375	7.375	9.75	
		4	4	4	4	4	4	4	4	4	4	6	8	6
I	Dia.	17/64	17/64	17/64	17/64	17/64	25/64	17/32	17/32	17/32	21/32	25/32	1 1/32	
		2 3/32	2.75	2.75	2.75	2.75	3 7/16	4 1/16	4 1/8	4 1/16	4 1/8	4.375	6.25	8
J	Dia.	1 SQR.	1.5 SQR.	1.5 SQR.	1.5 SQR.	1.5 SQR.	2.125	2.625	2.25 SQR.	2.625	2.25 SQR.	3.375	4.751	5.88
K	Dia.	0	0	0	0	0	0	0	0	0	0	0	5.563	

\*1" Lead Screw Models.

### Inverted Rotating Ball Screw Actuator



Lifting Screw - right hand, single thread on all models.

Model	DM 28632	KDM 2803	KDM 28031*	KDM 9803	KDM 98031*	KDM 28004	KDM 28006	KDM 28061*	DM 2811	DM 28111*	DM 2821	DM 2826	DM 2861*	
Capacity (Short Tons)	0.25	2	2	2	2	3	5	5	10	10	20	25	50	
A	Raise + 2 3/8	Raise + 3	Raise + 3 5/8	Raise + 3 1/6	Raise + 3 5/8	Raise + 3.75	Raise + 4 5/8	Raise + 4	Raise + 6	Raise + 5	Raise + 8	Raise + 10	Raise + 15	
B	0.625	1.125	1.125	1.125	1.125	1.125	1	1	1	1	2.5	2.25	3.25	
C	2.375	3.75	3.75	3.75	3.75	3.75	5.25	5.25	5	5	7.125	8.875	11	
D	0	0.625	0.625	0.625	0.625	1	0.75	0.75	1.125	1.125	1.625	2.5	2.5	
F	Dia.	0.437	0.750	0.750	0.750	0.750	1.000	1.000	1.000	1.000	1.750	2.250	3.250	
		0.435	0.748	0.748	0.748	0.748	0.748	0.998	0.998	0.998	0.998	1.748	2.248	3.248
G	1.75	2 3/8	3 1/32	2 3/8	3 1/32	3.395	4.33	3.65	4.33	3.65	6.706	9.395	12.625	
H	0.531	0.630	0.630	0.630	0.630	0.832	0.895	1.02	0.895	1.02	1.582	2.02	2.02	
I	Dia.	2.625	3.25	3.25	3.25	3.25	4.2	4 15/16	4 15/16	4 15/16	5.375	7.375	9.75	
		4	4	4	4	4	4	4	4	4	4	6	8	6
J	Dia.	17/64	17/64	17/64	17/64	17/64	25/64	17/32	17/32	17/32	21/32	25/32	1 1/32	
		2 3/32	2.75	2.75	2.75	2.75	3 7/16	4 1/16	4 1/8	4 1/16	4 1/8	4.375	6.25	8
K	Dia.	1 SQR.	1.5 SQR.	1.5 SQR.	1.5 SQR.	1.5 SQR.	2.125	2.625	2.25 SQR.	2.625	2.25 SQR.	3.375	4.751	5.88

**Note:**- Dimensions subject to change without notice.

\*1" Lead Screw Models.