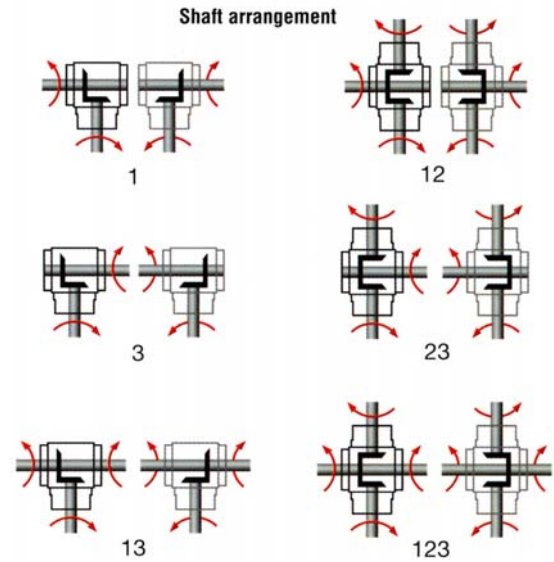
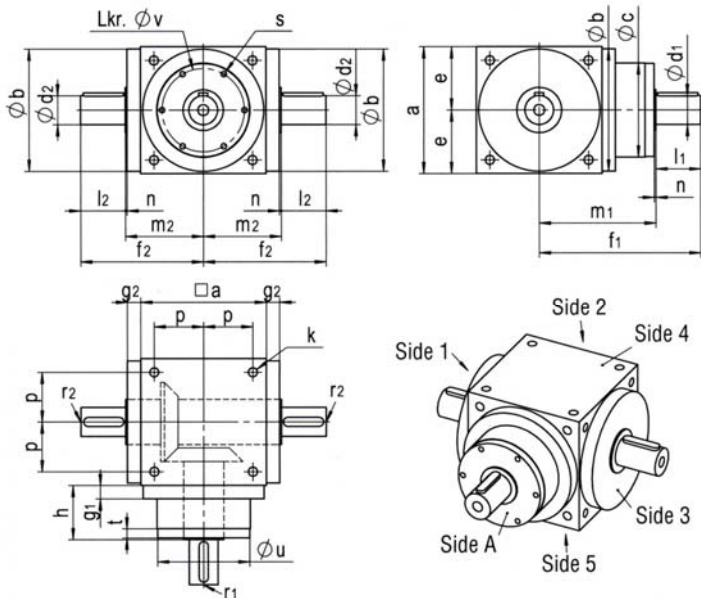


# DATA SHEET POWERGEAR P450

# Series L



right view in each case = mirrored presentation

Dimension	P450L 1:1 to 5:1
a	450
Øb h7	440
Øc	250
Ød1 J6	90
Ød2 J6	90
e	225
f1	570
f2	410
g1	22
g2	22
h	185
k	M20
l1	160
l2	160
m1	410
m2	247
n	3
p	175
r1 / r2	M24
s	on request
t	on request
Øu g6	on request
Øv	on request
Key	25x14x140
acc. to DIN6885/1	

P450L units have an extra cap centrally mounted on side 4 of gearbox  
P450L cap = Ø440x22  
Constructional modifications reserved

Performance	PowerGear	P450
1:1	Output Torque, M2 (Nm)	6600
1.5:1	Output Torque, M2 (Nm)	6600
2:1	Output Torque, M2 (Nm)	6600
3:1	Output Torque, M2 (Nm)	6600
4:1	Output Torque, M2 (Nm)	6600
5:1	Output Torque, M2 (Nm)	6000
Max. Speed	Input Speed, N1 (rpm)	1000
at 2% max. load	standard output backlash (arcmin) minimum output backlash (arcmin)	7.5 - 10.0 3.5 - 6.0
Allowable Radial load (N)	Input shaft d1 Output shaft d2	on request on request
Allowable Axial Load (N)	Input shaft d1 Output shaft d2	on request on request
Weight (kg)		400
Thermal	Performance limit (kW)	127