



ACTUATOR SPECIFICATION SUMMARY

Actuator Specification Summary

Power Jacks now offers four families of Packaged Controls for its electro-mechanical linear actuators. These extend/retract control systems are specifically designed to meet the needs of today's most demanding industrial applications, while being easy to install, connect and maintain. To simplify matters further each control package is designed to match a specific electro-mechanical actuator family.

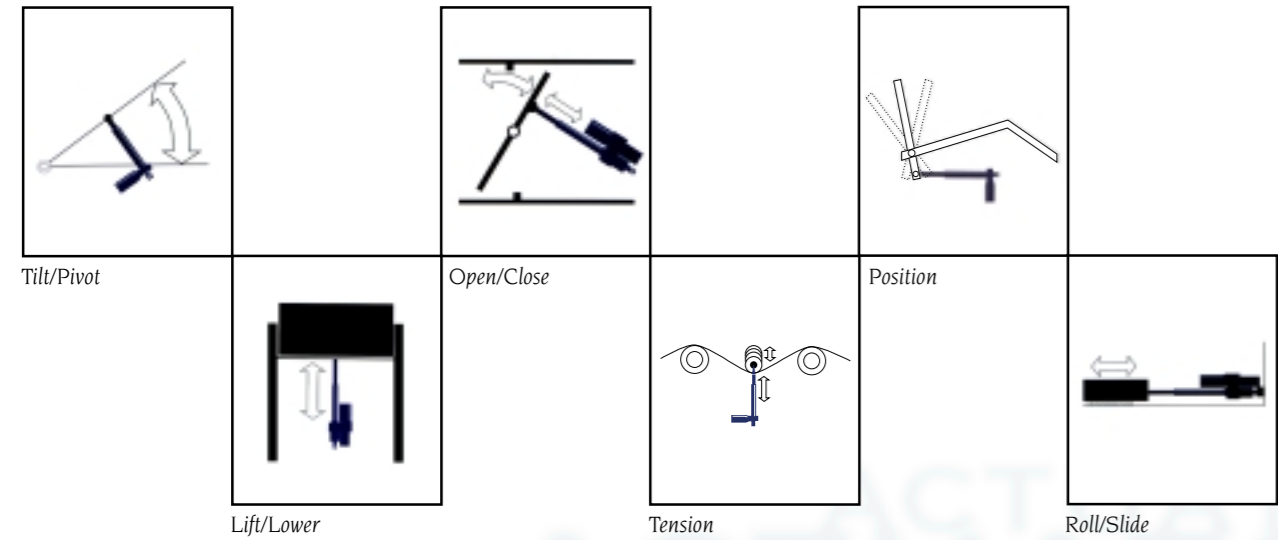
The Control systems feature an illuminated rocker type switch, 16 gauge steel NEMA 12 (IP 61) and NEMA 13 (IP 63) enclosure and external mounting feet. All controls are internally wired and include capacitors and/or relays as required for the specific actuator. Terminal strips are also included for easy connection.



Control	Actuator Range
EMCP - 1	250 lb, 500 & 750 lb AC
EMCP - 2	1000 lb AC
EMCP - 3	1500 lb & 2000 lb AC
EMCP - 4	All DC Units

Extra Control

EMDL10 & 25 TracMaster actuators benefit from a range of extended controls including an extend/retract pendant control which can also be surface mounted. Portable power supplies also available.

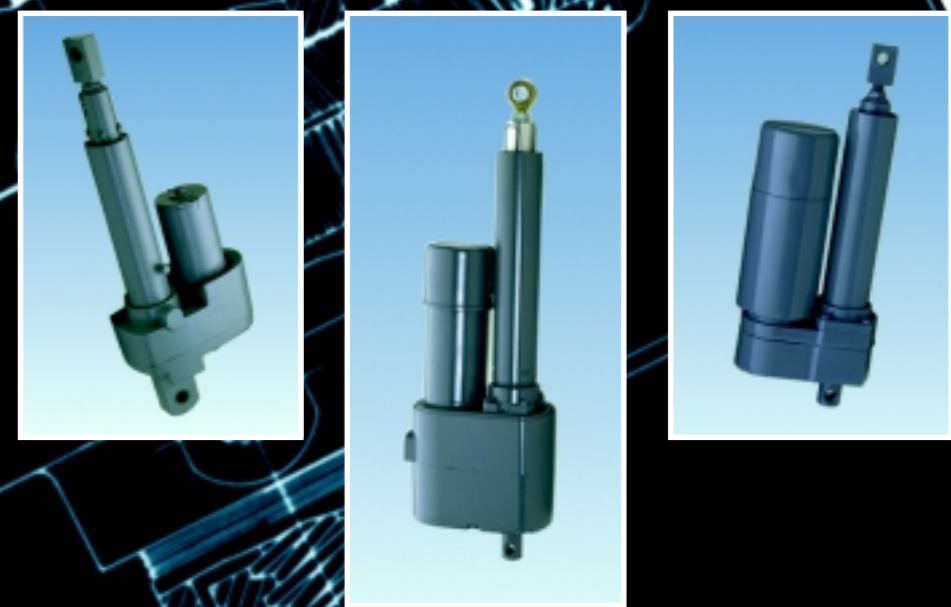


TYPICAL FUNCTIONS of Duff-Norton electro-mechanical actuators may be applied to almost any type of machine or mechanism.

Models are available with either alternating or direct current motors, permitting stationary or mobile applications.



POWER JACKS



Distributed by:



Power Jacks Limited

South Harbour Road Fraserburgh AB43 9BZ Scotland
 Tel: +44 (0)1346 513131 Fax: +44 (0)1346 516827
 email: sales@powerjacks.com http://www.powerjacks.com





INTRODUCTION

Introduction



Packaged Solutions, Countless Applications

Power Jacks range of Duff-Norton electro-mechanical actuators are the best packaged solution for your linear actuation needs. With capacities ranging from 0.45 kN to 8.9 kN (100 lb to 2000 lb), no one offers a greater selection of both AC and DC models. This extensive line of models is designed to meet the requirements of the most challenging applications. Benefiting from the latest in advanced design techniques, manufacturing methods, and over three decades of electro-mechanical product experience, Duff-Norton packaged electro-mechanical actuators last longer and run smoother with little maintenance and no headaches. If you have a linear actuation application, Power Jacks has the packaged solution for you.

AC Actuators Keep Industry in Motion

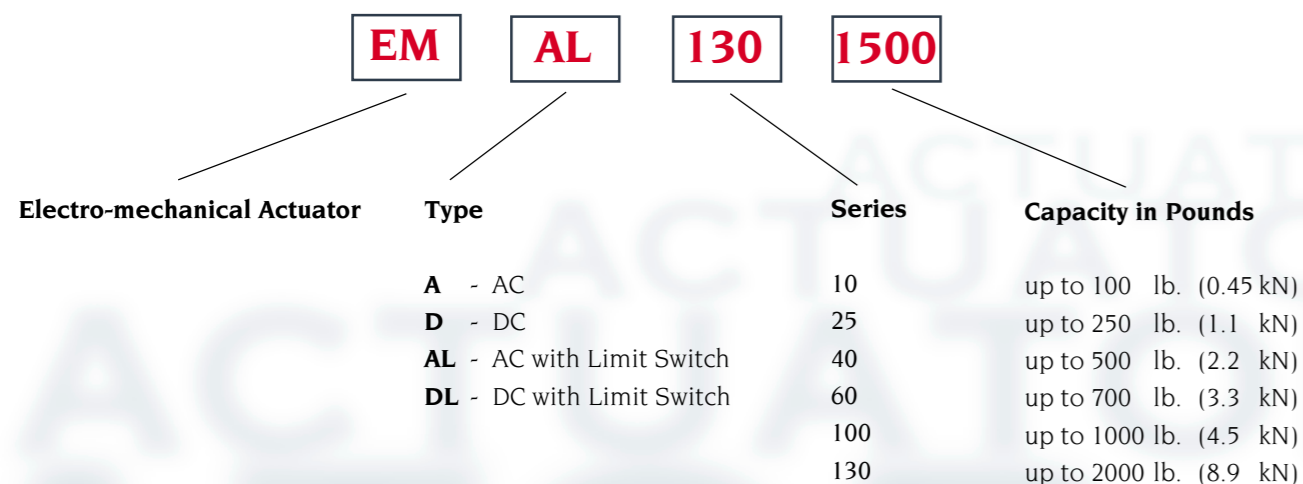
Duff-Norton AC electro-mechanical actuators are specially designed for a broad variety of industrial applications. In areas where simplicity of installation and independent operation are required, they provide the answer. Many of the AC Models feature easily adjustable limit switches for precise positioning and control, reducing operator involvement to the push of a button. AC electro-mechanical actuators also feature a patented bi-directional brake to eliminate drift. Available in stroke lengths from 50-610 mm (2- 24 inches) and input voltages of 115V (60 Hz) and 220V (50 Hz), Duff-Norton packaged AC electro-mechanical actuators provide the perfect solution for all of your linear motion applications.



DC Actuators For Applications on the Move

Developed for use on mobile machinery, the Duff-Norton family of 12 and 24 volt DC electro-mechanical actuators provide solutions for all of your mobile linear actuation needs. Compact and powerful, they are suitable for applications up to 8.9 kN (2000 lb). Critical for mobile applications, the aluminium alloy housing and compact drive mechanism give the Power Jacks family of DC actuators greater power-to-weight ratios than any other. Simple to install and easy to maintain, Power Jacks range of DC electro-mechanical actuators are the perfect solution for your mobile actuation needs.

How to Identify the Optimal Electro-mechanical Actuator Family for your Application.



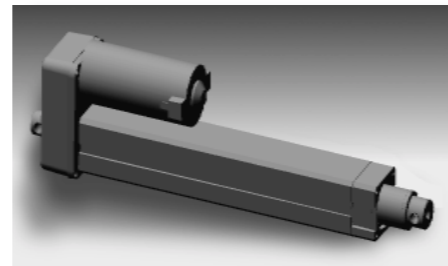
ACTUATOR SPECIFICATION SUMMARY

Actuator Specification Summary

TracMaster Series

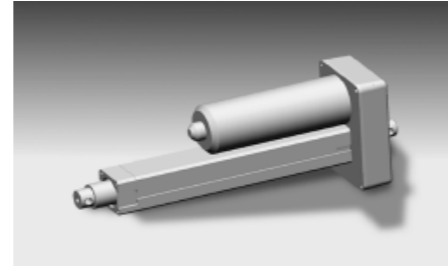
General purpose, economical electro-mechanical actuators

EMDL10-100



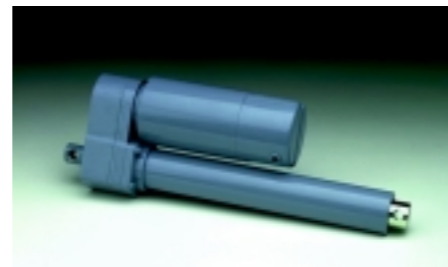
Model	EMDL10	
Rated Capacities	100 lb (0.45 kN)	
Input Voltages	12VDC	24 VDC
Standard Stroke Lengths	50 to 300 mm (2 to 12 inches)	
Lifting Speeds (max)	0.96 m/min (38 in/min)	1.5 m/min (60 in/min)
Features	<ul style="list-style-type: none"> Keyed translating tube (ram). Easily adjustable, end of travel limit switches. Optional potentiometer feedback. 	
Data Sheets (complete technical information)	EMDL10-100	

EMDL25-250



Model	EMDL25	
Rated Capacities	250 lb (1.1 kN)	
Input Voltages	12 VDC	24 VDC
Standard Stroke Lengths	50 to 300 mm (2 to 12 inches)	
Lifting Speeds (max)	0.63 m/min (25 in/min)	1.05 m/min (42 in/min)
Features	<ul style="list-style-type: none"> Keyed translating tube (ram). Easily adjustable, end of travel limit switches. Optional potentiometer feedback. 	
Data Sheets (complete technical information)	EMDL25-250	

EMAL60-750 EMDL60-750



Model	EMAL60-750	EMDL60-750
Rated Capacities	750 lb (3.3 kN)	
Input Voltages	115 VAC, 60 Hz and 220 VAC, 50 Hz	12 VDC and 24 VDC
Standard Stroke Lengths	100 to 450 mm (4 to 18 inches)	
Lifting Speeds (max)	0.4 m/min (15.8 in/min)	0.61 m/min (24 in/min)
Features	<ul style="list-style-type: none"> End of travel limit switches Potentiometer position feedback option 	
Data Sheets (complete technical information)	EMAL60-750 (750 lb)	EMDL60-750 (750 lb)

ProMaster Series

EMA40-250 & 500 EMD40-250 & 500



Model	EMA40-250 & 500	EMD40-250 & 500
Rated Capacities	250 lb and 500 lb (1.1 kN and 2.2 kN)	
Input Voltages	115 VAC, 60 Hz and 220 VAC, 50 Hz	12 VDC and 24 VDC
Standard Stroke Lengths	75 to 450 mm (3 to 18 inches)	
Lifting Speeds (max)	2.15 m/min (85 in/min)	3.56 m/min (140 in/min)
Features	<ul style="list-style-type: none"> Overload and over travel limiting clutch Anti-back drive brake 	
Data Sheets (complete technical information)	EMA40-250 (250 lb) EMA40-500 (500 lb)	EMD40-250 (250 lb) EMD40-500 (500 lb)



ACTUATOR SPECIFICATION SUMMARY

Actuator Specification Summary

EMAL40-250 & 500 EMDL40-250 & 500



Model	EMAL40-250 & 500	EMDL40-250 & 500
Rated Capacities	250lb and 500 lb (1.1 kN and 2.2 kN)	
Input Voltages	115 VAC, 60 Hz and 220 VAC, 50 Hz	12 VDC and 24 VDC
Standard Stroke Lengths	75 to 450 mm (3 to 18 inches)	
Lifting Speeds (max)	2.15 m/min (85 in/min)	3.56 m/min (140 in/min)
Features	<ul style="list-style-type: none"> Easily adjustable, end of travel limit switches Anti-back drive brake 	
Data Sheets (complete technical information)	EMAL40-250 (250 lb) EMAL40-500 (500 lb)	EMDL40-250 (250 lb) EMDL40-500 (500 lb)

EMAL100-1000 EMDL100-1000



Model	EMAL100-1000	EMDL100-1000
Rated Capacities	1000 lb (4.5 kN)	
Input Voltages	115 VAC, 60 Hz and 220 VAC, 50 Hz	12 VDC and 24 VDC
Standard Stroke Lengths	75 to 610 mm (3 to 24 inches)	
Lifting Speeds (max)	1.35 m/min (53 in/min)	0.96 m/min (38 in/min)
Features	<ul style="list-style-type: none"> Ball screw drive Adjustable limit switches with optional potentiometer Electric brake 	
Data Sheets (complete technical information)	EMAL100-1000 (1000 lb) EMDL100-1000 (1000 lb)	

EMAL130-1500 & 2000



Model	EMAL130-1500 & 2000	
Rated Capacities	1500 lb and 2000 lb (6.7 kN and 8.9 kN)	
Input Voltages	115 VAC, 60 Hz and 220 VAC, 50 Hz	
Standard Stroke Lengths	76 to 610 mm (3 to 24 inches)	
Lifting Speeds (max)	1.3 m/min (50 in/min)	
Features	<ul style="list-style-type: none"> Double pitch lead machine screw or ball screw drive models Limit switches for both ends of travel Potentiometer position feedback option Anti-back drive brake 	
Data Sheets (complete technical information)	EMAL130-1500 (1500 lb) EMAL130-2000 (2000 lb)	

EMD130-1500 & 2000 EMDL130-1500



Model	EMD130-1500 & 2000	EMDL130-1500
Rated Capacities	1500 lb and 2000 lb (6.7 kN and 8.9 kN)	1500 lb (6.7 kN)
Input Voltages	12 VDC	
Standard Stroke Lengths	75 to 610 mm (3 to 24 inches)	
Lifting Speeds (max)	0.685 m/min (27 in/min)	
Features	<ul style="list-style-type: none"> Double pitch lead machine screw or ball screw drive models Built-in slip clutch prevents excessive loads & travel Anti-back drive brake Limit switches for both ends of travel 	
Data Sheets (complete technical information)	EMD130-1500 (1500 lb) EMD130-2000 (2000 lb)	EMDL130-1500 (1500 lb)