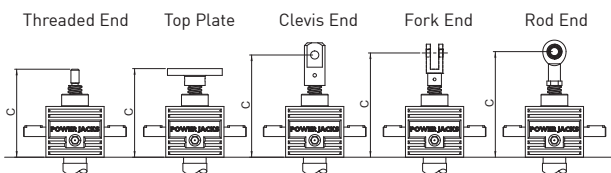


Performance

| Screw Jack Model                      | CM-0005           |                |
|---------------------------------------|-------------------|----------------|
| Capacity                              | kN                | 5              |
| Lead Screw                            | Diameter (mm)     | 16             |
|                                       | Lead (mm)         | 3   6          |
| Gear Ratios                           | Option 1          | 5:1            |
|                                       | Option 2          | 20:1           |
| Turn of worm for travel of lead screw | Option 1   1 Turn | 0.6mm   1.2mm  |
|                                       | Option 2   4 Turn | 0.15mm   0.3mm |
| Maximum Input Power (kW)              | Option 1          | 0.250          |
|                                       | Option 2          | 0.120          |
| Start up torque at full load (Nm)     | Option 1          | 2.5   3.3      |
|                                       | Option 2          | 1.1   1.4      |
| Maximum Through Torque (Nm)           | Option 1          | 7.5            |
|                                       | Option 2          | 3.3            |
| Static Efficiency                     | Option 1          | 0.189   0.291  |
|                                       | Option 2          | 0.102   0.165  |
| Dynamic Efficiency                    | Option 1          | 0.252   0.37   |
|                                       | Option 2          | 0.160   0.234  |
| Lead Screw Restraining Torque (Nm)    | -                 | 8.0   10.5     |
| Worm Shaft Radial Load (N)            |                   | 150            |
| Maximum Input Speed (rpm)             | -                 | 1800           |
| Gear Case Material                    |                   | Aluminium      |
| Weight (kg) - stroke = 150mm          | Translating       | 1.7            |
|                                       | Rotating          | 1.9            |
| Weight (kg) - per extra 25mm          | Translating       | 0.085          |
|                                       | Rotating          | 0.035          |

CMT0005 Closed Heights



| Closed Height 'C' | Threaded End           | Top Plate | Clevis End | Fork End | Rod End |
|-------------------|------------------------|-----------|------------|----------|---------|
| CMT0005           | 97                     | 118       | 97         | 120      | 117     |
| Stroke (mm)       | With Bellows Boots (B) |           |            |          |         |
| 0 - 250           | 107                    | 128       | 108        | 130      | 127     |
| 251 - 500         | 117                    | 138       | 117        | 140      | 137     |
| 501 - 800         | 132                    | 153       | 132        | 155      | 152     |
| 1501 - 2000       | 290                    | 290       | 310        | 313      | 315     |

CMT0005 Stop Nut

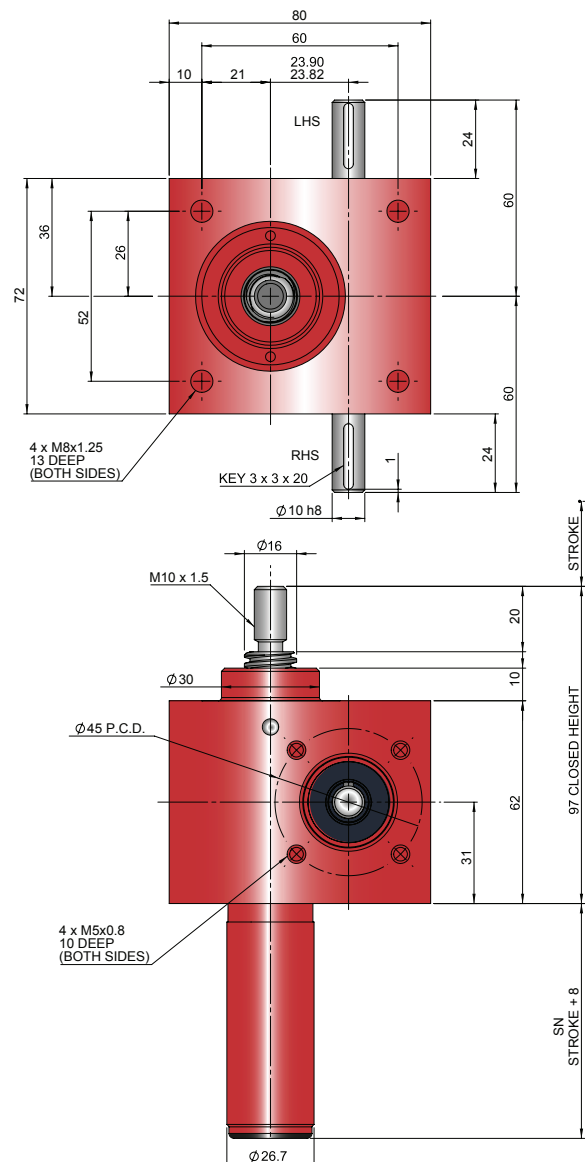


Stop nut provides a full power mechanical stop at the end of the lead screw. To be used as a safety feature in emergency conditions.  
SN = Stroke + 25mm

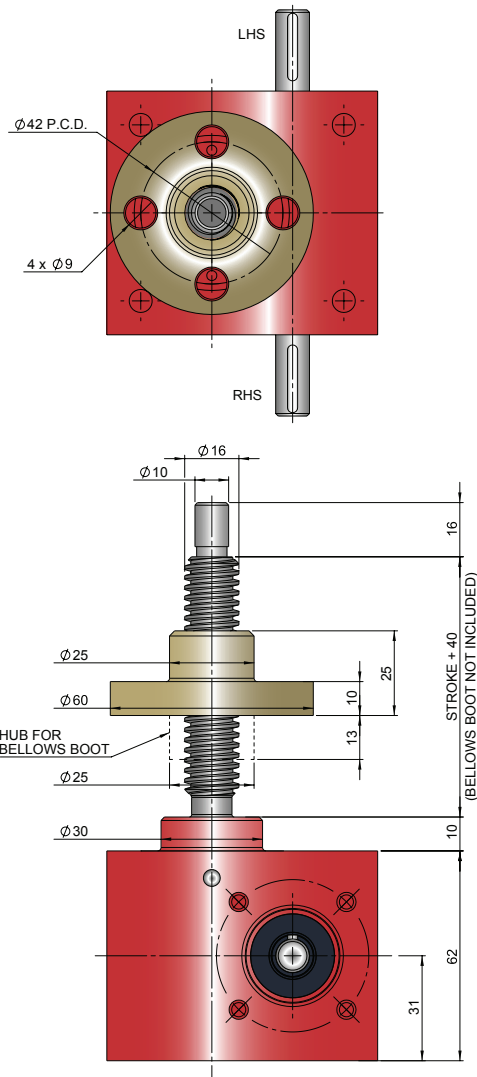
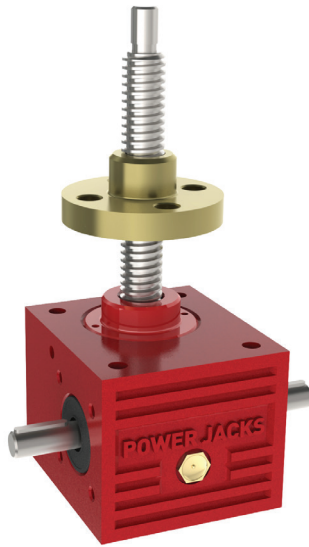
Note:

1. All dimension in millimetres unless otherwise stated.
2. Designs subject to change without notice.

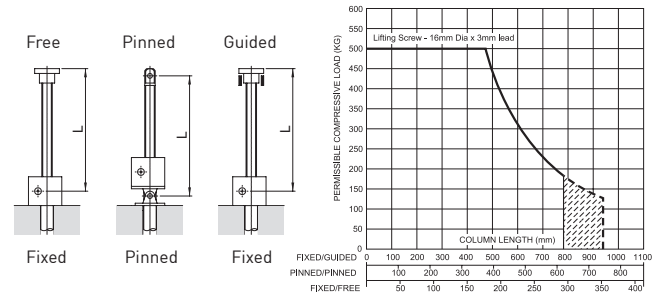
CMT0005-C00



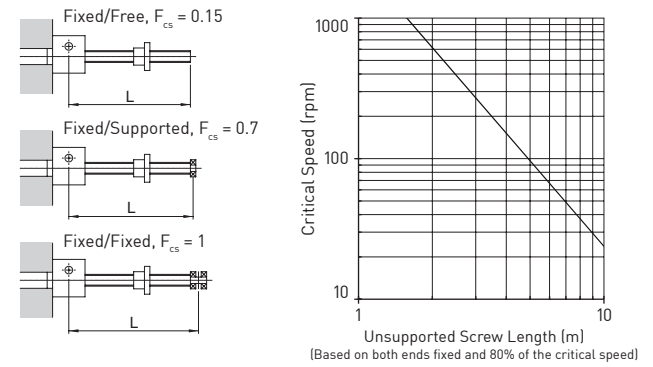
CMR0005-C00



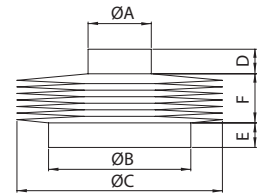
### Column Strength



### Critical Screw Speed



### Bellows Boot



|                   | $\varnothing A$ | $\varnothing B$ | $\varnothing C$ | D  | E  |
|-------------------|-----------------|-----------------|-----------------|----|----|
| CMT0005           | 25              | 30              | 100             | 13 | 10 |
| CMT0005 (Rod End) | 19              | 30              | 100             | 13 | 10 |
| CMR0005           | 25              | 30              | 100             | 13 | 10 |

| Stroke | 1 - 500 | 501 - 1000 | 1001 - 1500 | 1500 - 2000 |
|--------|---------|------------|-------------|-------------|
| F      | 30      | 60         | 90          | 170*        |

### Accessories & Options

|  |                       |  |                      |  |                             |
|--|-----------------------|--|----------------------|--|-----------------------------|
|  | Anti-Backlash         |  | End Fittings         |  | Rotary Limit Switch Adaptor |
|  | Anti-Rotation (Keyed) |  | Limit Switches       |  | Double Hub Nut              |
|  | Safety Nut            |  | Motor Adaptors       |  | Drives                      |
|  | Trunnion Mounts       |  | Corrosion Protection |  | Secondary Guide             |