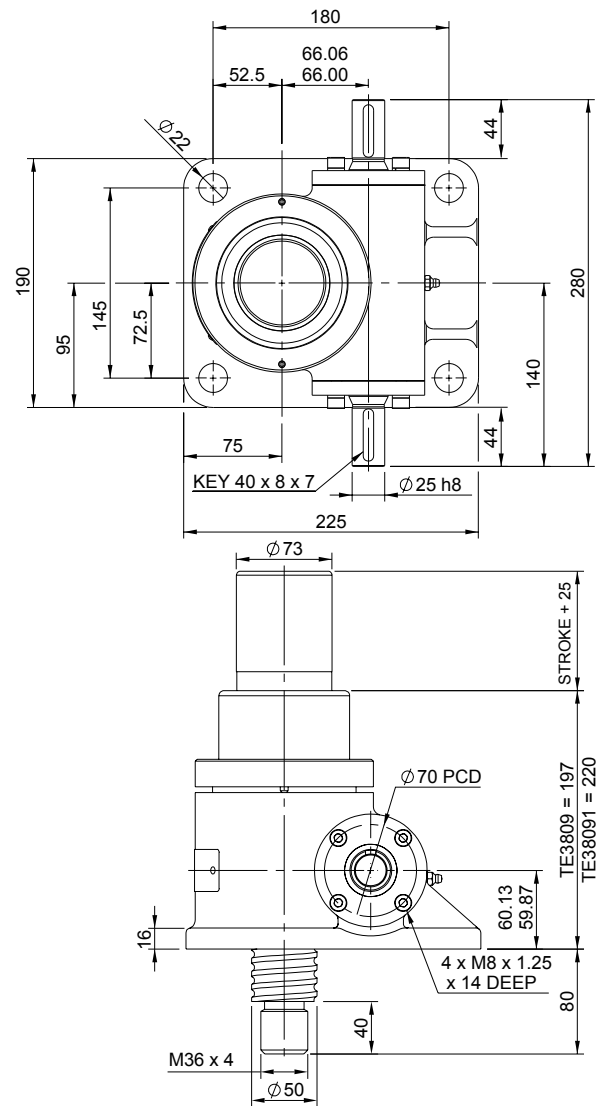
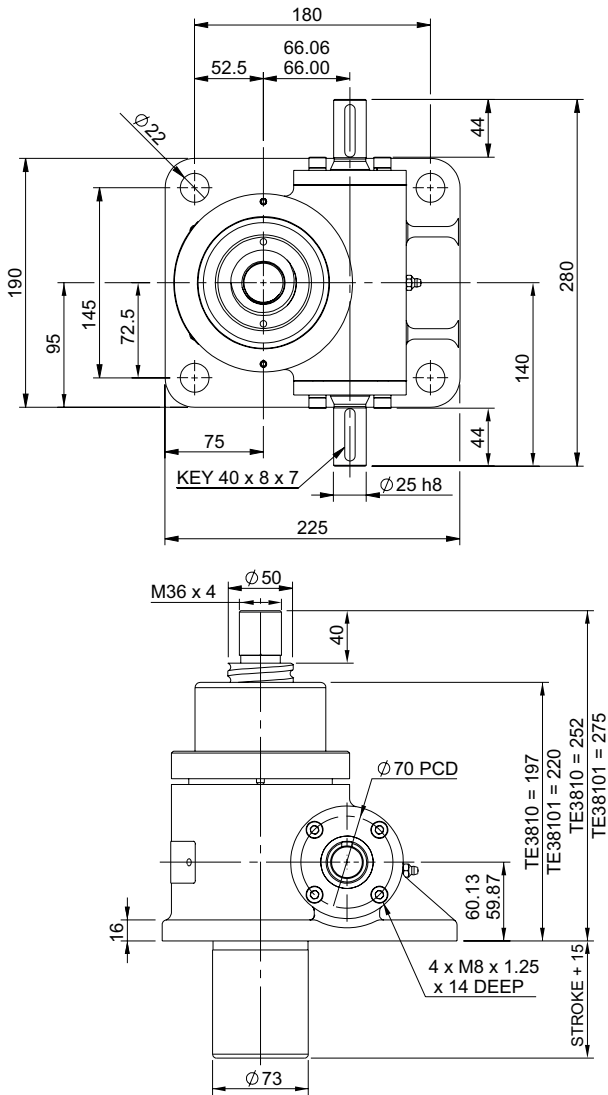


Upright EBT0100-U00

Inverted EBT0100-I00



EBT0100-U00

Closed Height

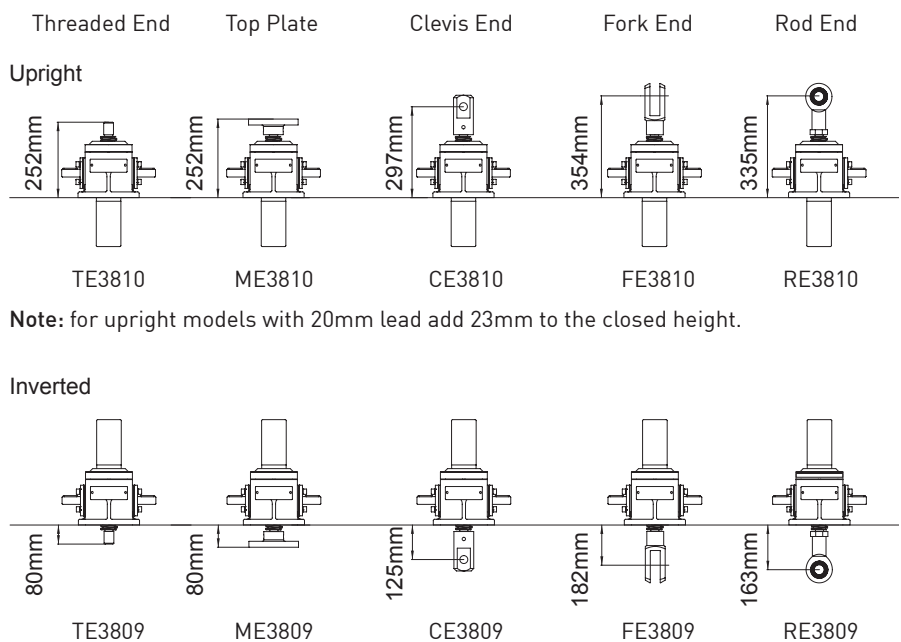


Translating Screw

EBR0100-U00



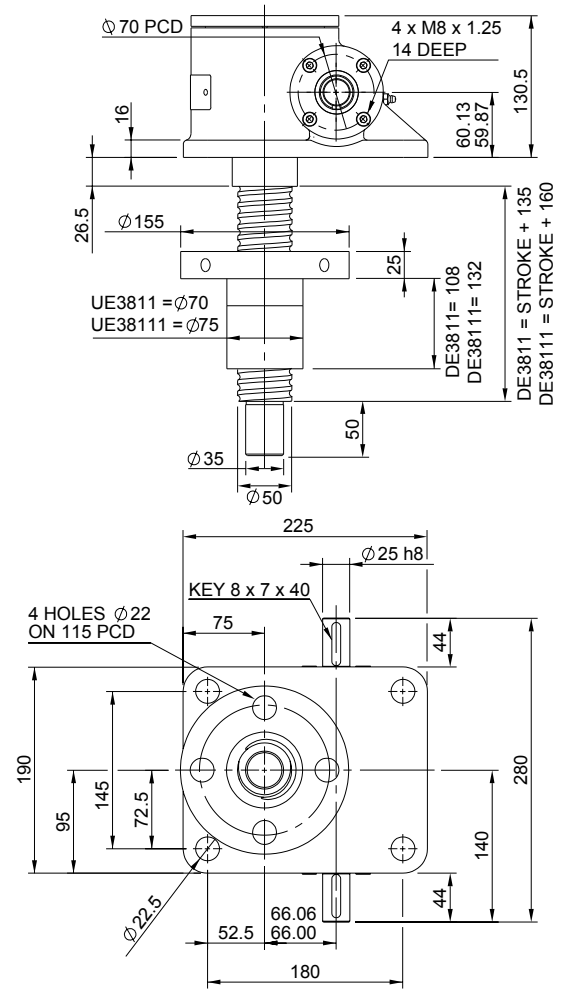
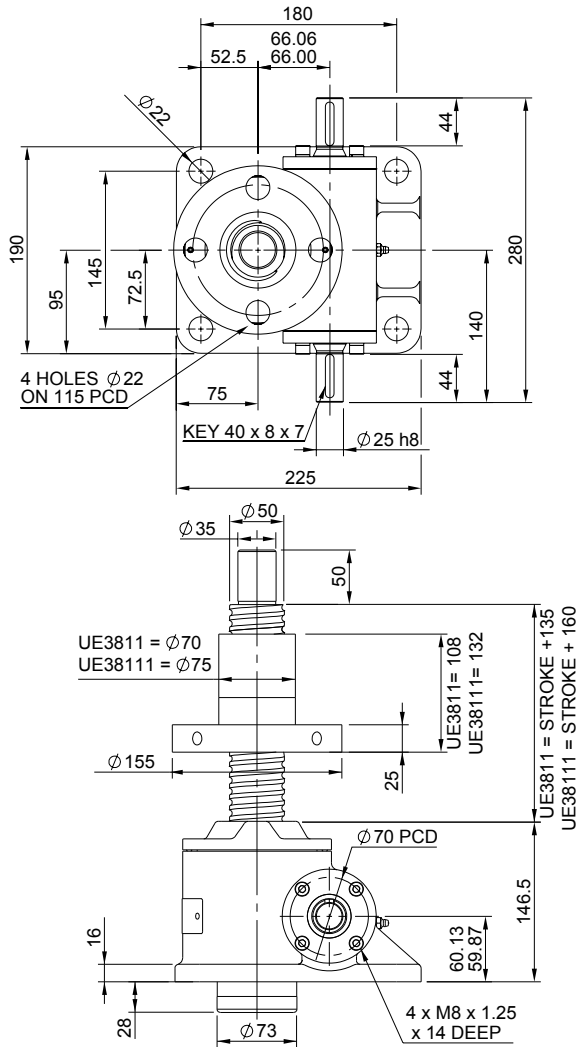
Rotating Screw



Note: for upright models with 20mm lead add 23mm to the closed height.

Upright EBR0100-U00

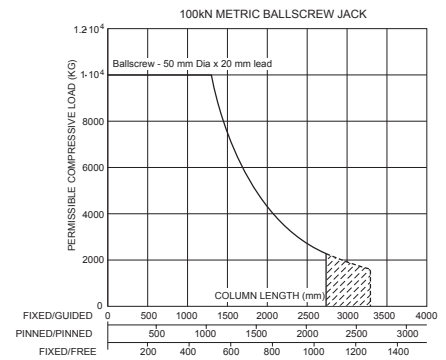
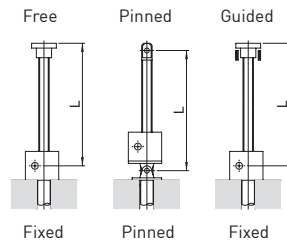
Inverted EBR0100-I00



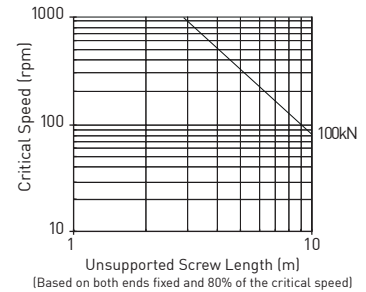
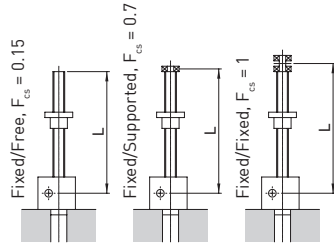
Performance

Column Strength

Model		E3810	E38101
Capacity	kN	100	
Lifting Screw	Diameter (mm)	50	
	Lead	Option 1	Option 2
	mm	10	20
Gear Ratio Option 1	Gear Ratio	8:1	
	Screw Jack Static Efficiency	0.546	0.581
	Screw Jack Static Dynamic	0.645	0.674
Gear Ratio Option 2	Gear Ratio	24:1	
	Screw Jack Static Efficiency	0.348	0.370
	Screw Jack Static Dynamic	0.450	0.470
Max. Input power (kW)	Gear Ratio Option 1	3.75	
	Gear Ratio Option 2	1.125	
Start up torque at full load (Nm)	Gear Ratio Option 1	36.4	68.5
	Gear Ratio Option 2	19.1	35.8



Critical Screw Speed



Note: All dimension in millimetres unless otherwise stated. Designs subject to change without notice