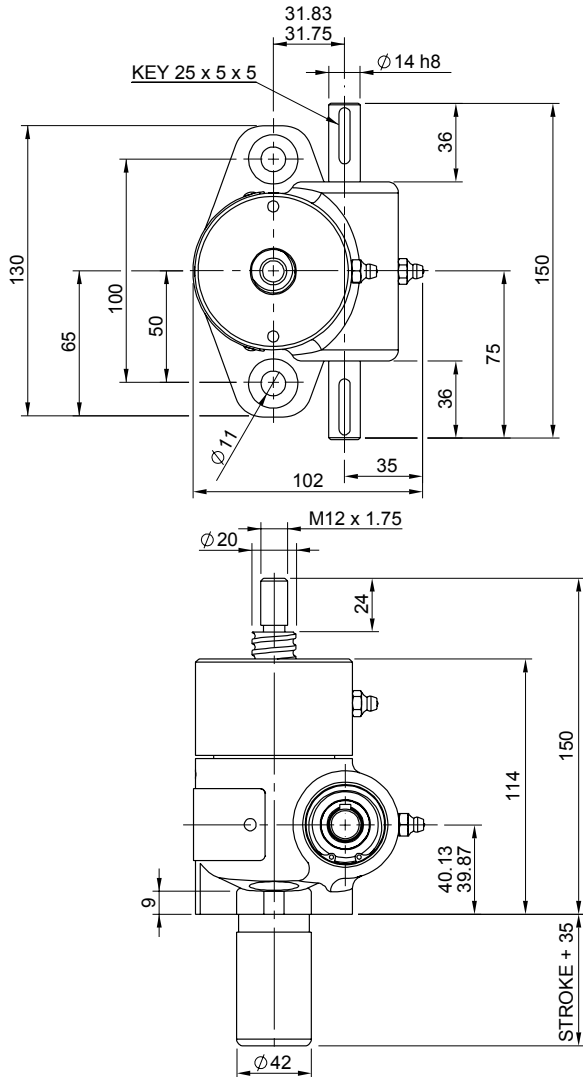
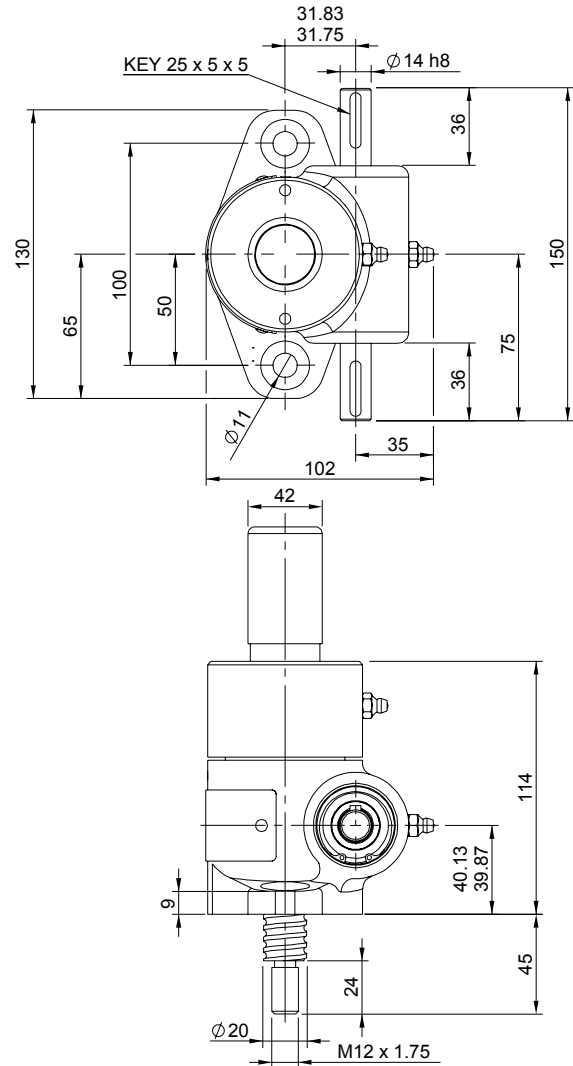


Upright EBT0010-U00



Inverted EBT0010-I00



EBT0010-U00



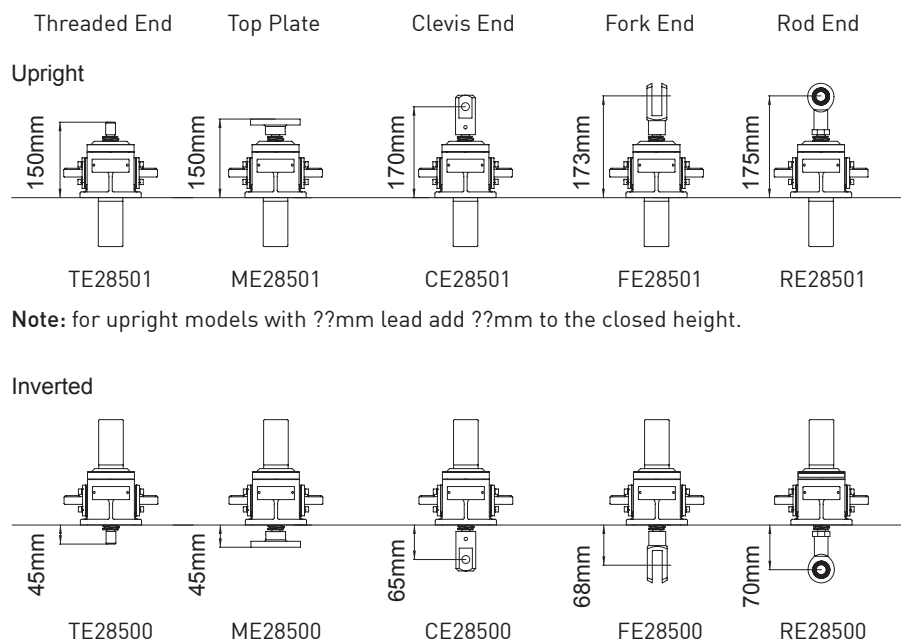
Translating Screw

EBR0010-U00



Rotating Screw

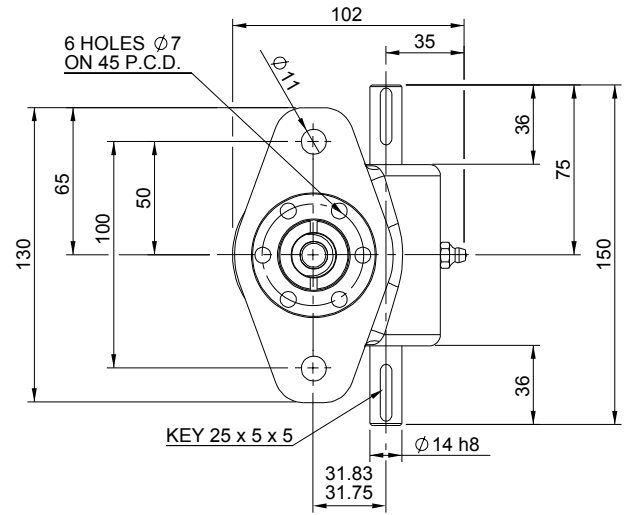
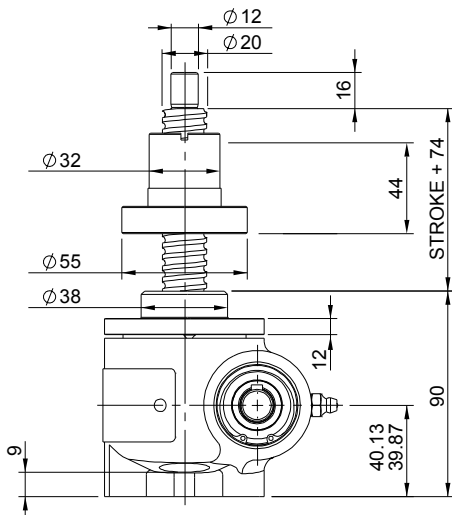
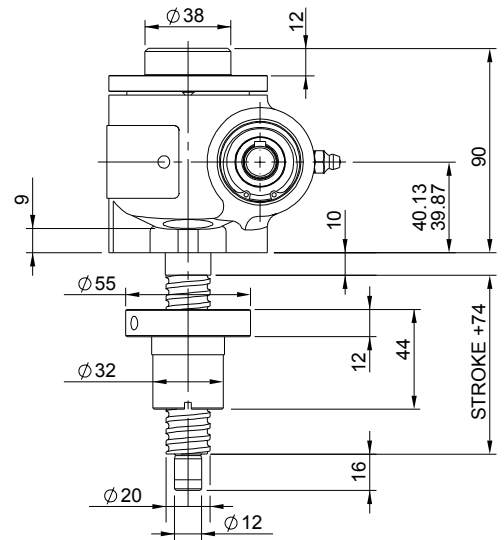
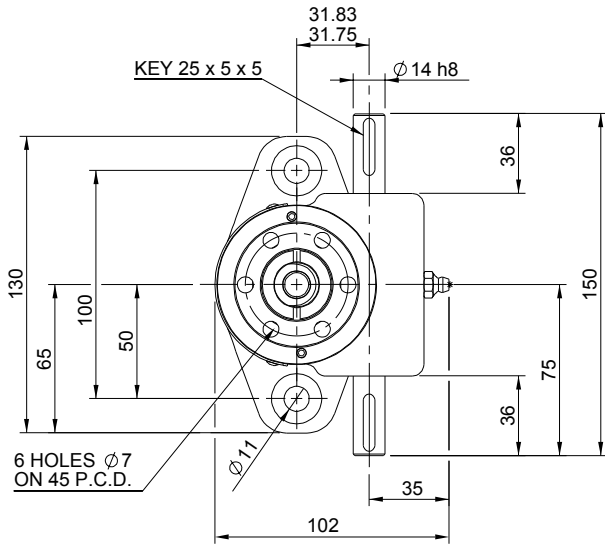
Closed Height



Note: for upright models with 2mm lead add 2mm to the closed height.

Upright EBR0010-U00

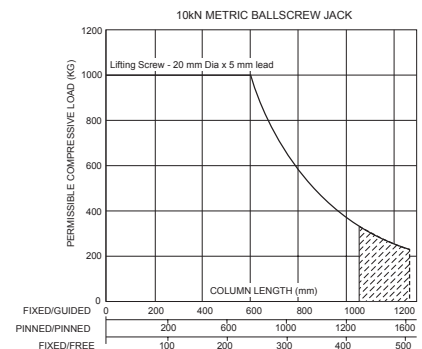
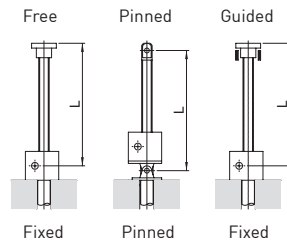
Inverted EBR0010-I00



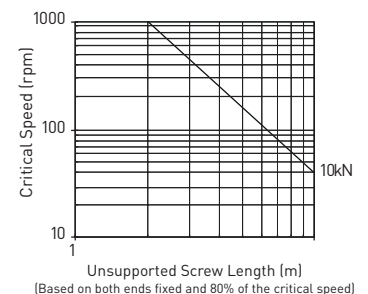
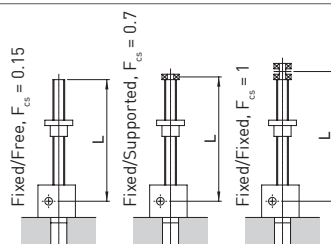
Performance

Column Strength

Model		E28501
Capacity	kN	10
Lifting Screw	Diameter (mm)	20
	Lead	Option 1 mm 5
Gear Ratio Option 1	Gear Ratio	5:1
	Screw Jack Static Efficiency	0.603
	Screw Jack Static Dynamic	0.681
Gear Ratio Option 2	Gear Ratio	20:1
	Screw Jack Static Efficiency	0.341
	Screw Jack Static Dynamic	0.429
Max. Input power (kW)	Gear Ratio Option 1	0.375
	Gear Ratio Option 2	0.18
Start up torque at full load (Nm)	Gear Ratio Option 1	2.7
	Gear Ratio Option 2	1.2



Critical Screw Speed



Note: All dimension in millimetres unless otherwise stated. Designs subject to change without notice