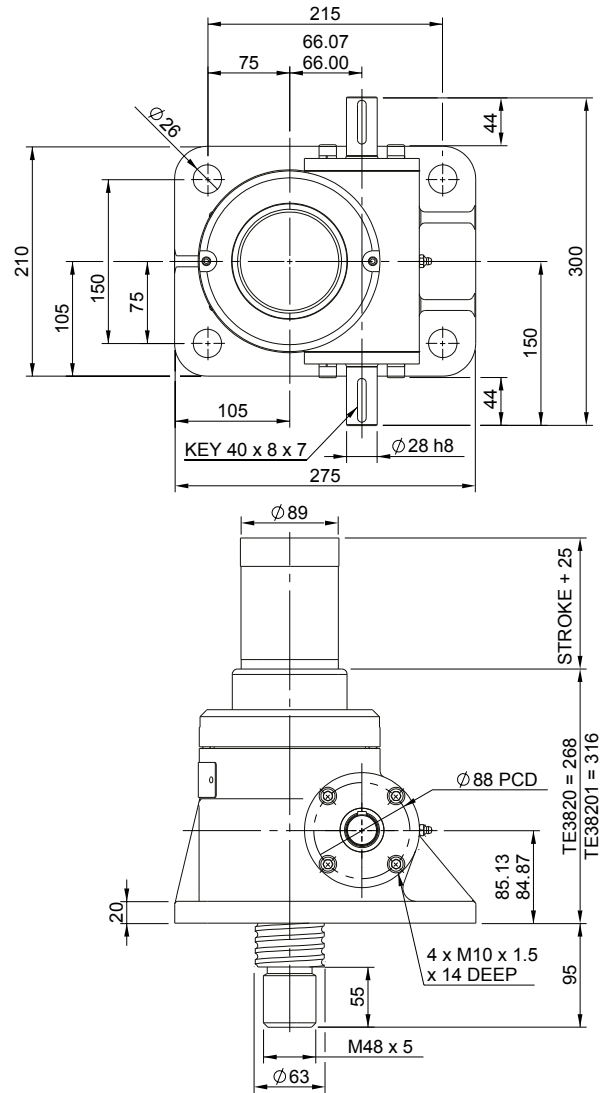
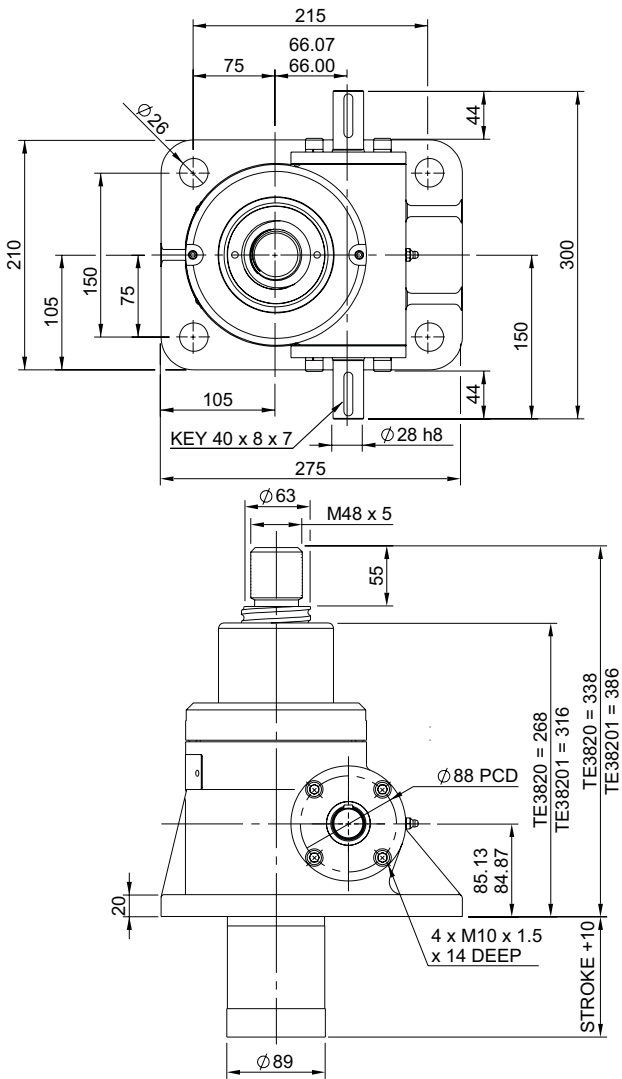


Upright EBT0200-U00

Inverted EBT0200-I00



EBT0200-U00

Closed Height

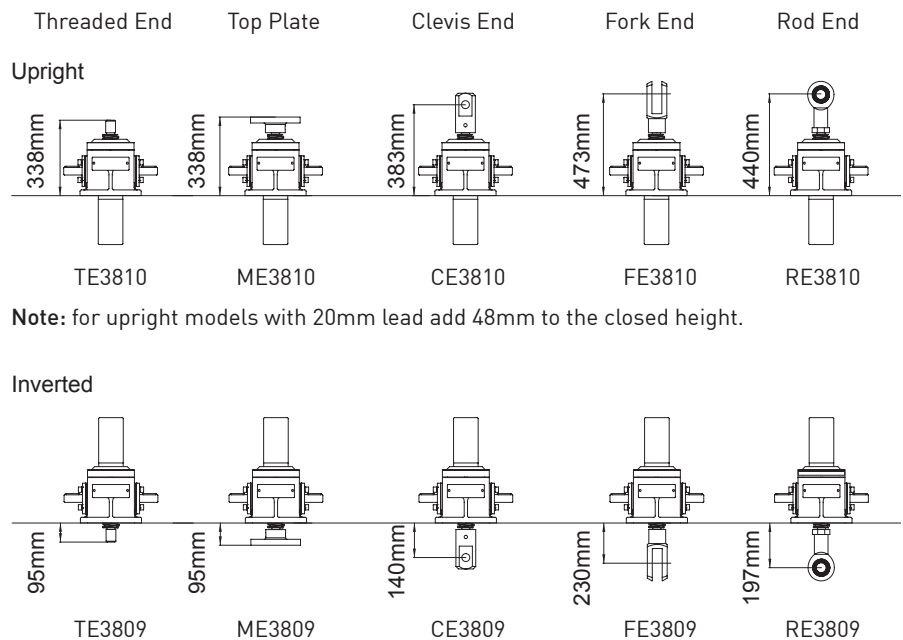


Translating Screw

EBR0200-U00



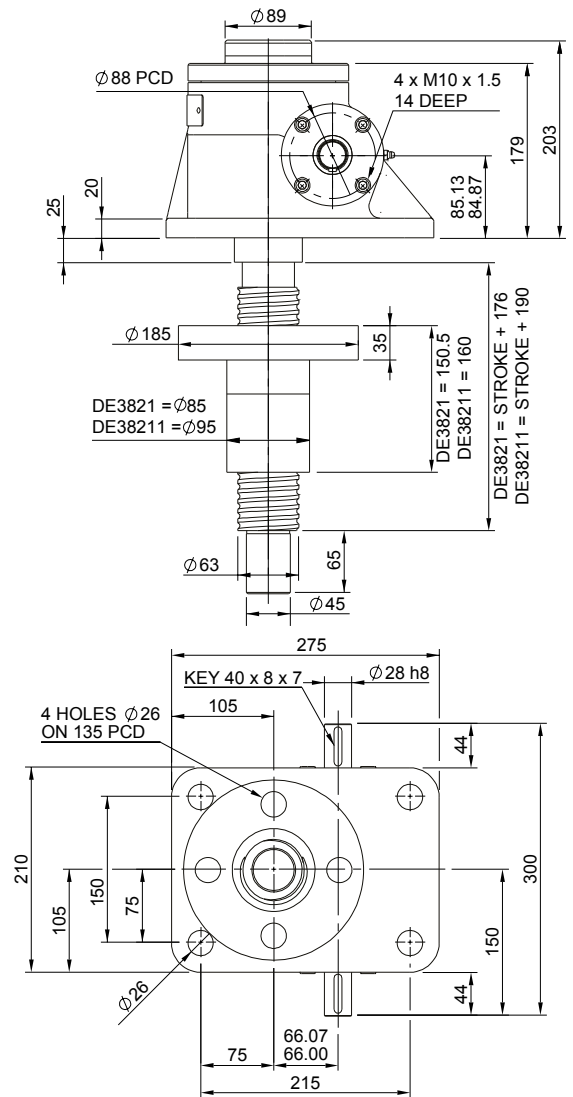
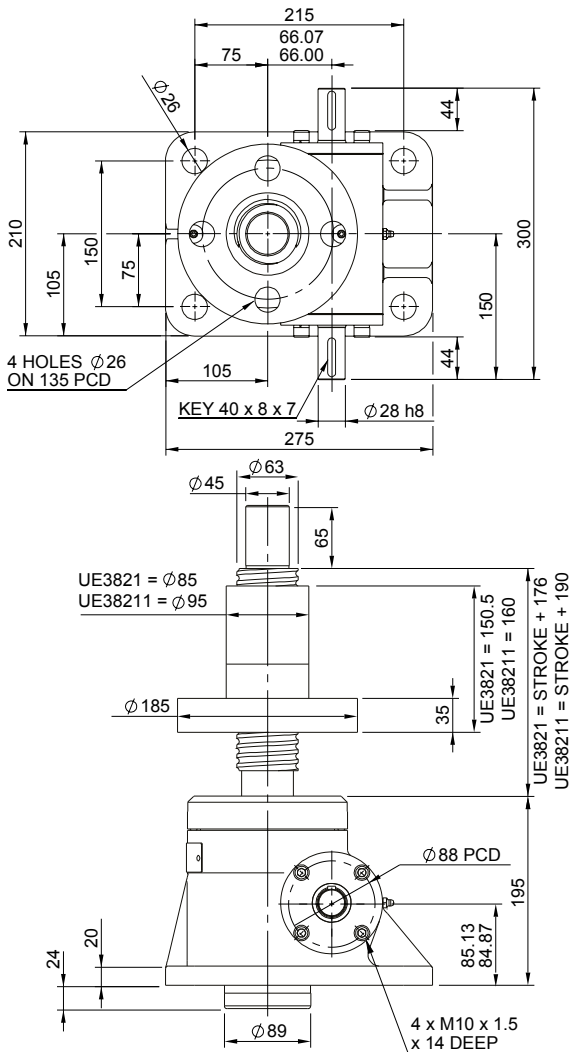
Rotating Screw



Note: for upright models with 20mm lead add 48mm to the closed height.

Upright EBR0200-U00

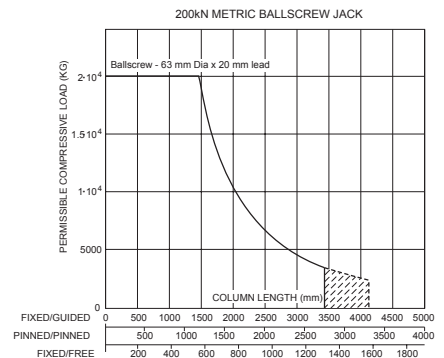
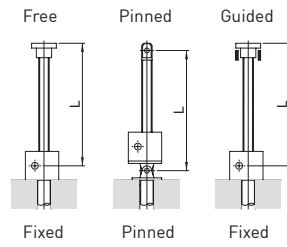
Inverted EBR0200-I00



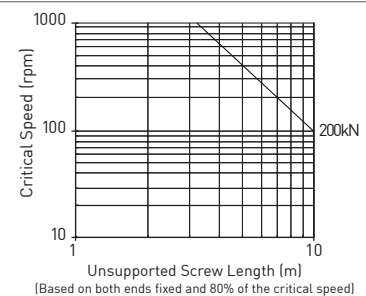
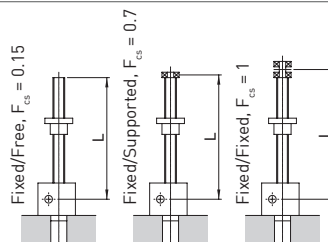
Performance

Column Strength

Model		E3820	E38201
Capacity	kN	200	
Lifting Screw	Diameter (mm)	63	
	Lead	Option 1 mm	Option 2 mm
Gear Ratio Option 1	Gear Ratio	8:1	
	Screw Jack Static Efficiency	0.529	0.571
	Screw Jack Static Dynamic	0.631	0.665
Gear Ratio Option 2	Gear Ratio	24:1	
	Screw Jack Static Efficiency	0.337	0.364
	Screw Jack Static Dynamic	0.440	0.465
Max. Input power (kW)	Gear Ratio Option 1	3.75	
	Gear Ratio Option 2	1.125	
Start up torque at full load (Nm)	Gear Ratio Option 1	75.2	139.4
	Gear Ratio Option 2	39.4	72.9



Critical Screw Speed



Note: All dimension in millimetres unless otherwise stated. Designs subject to change without notice