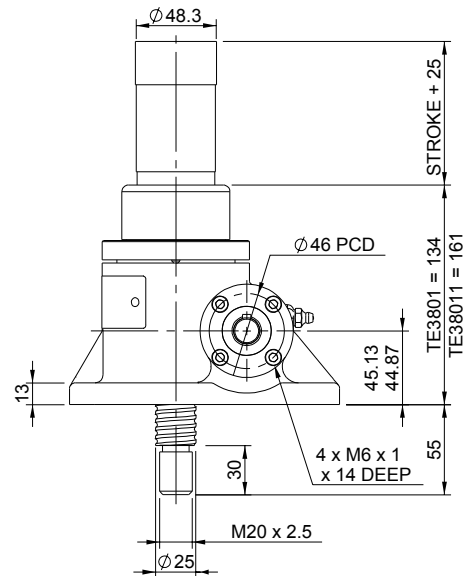
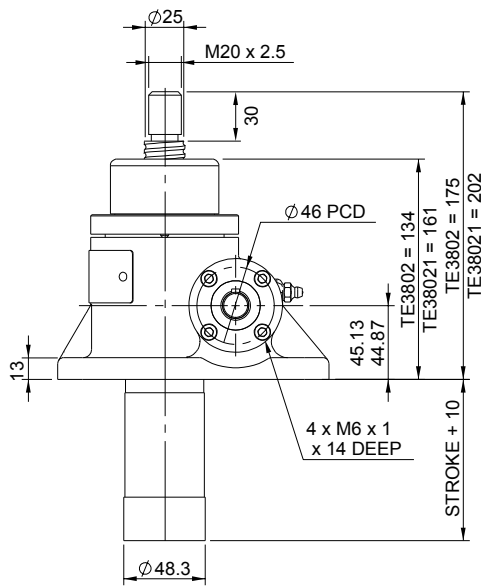
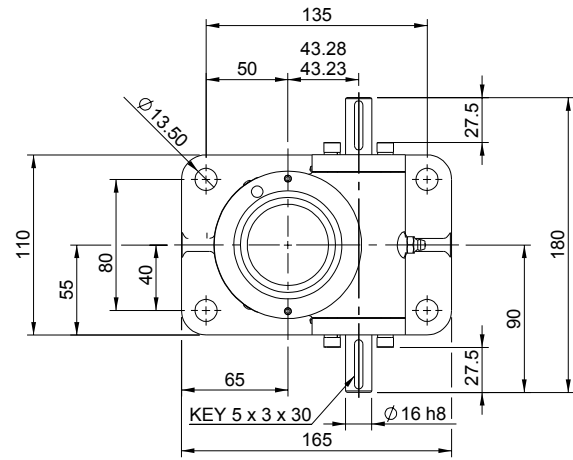
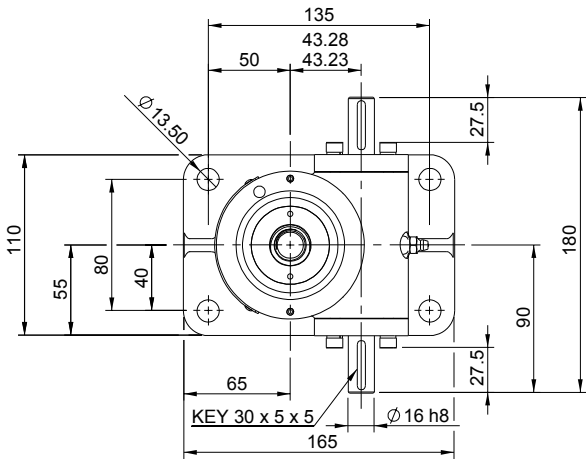


Upright EBT0025-U00

Inverted EBT0025-I00

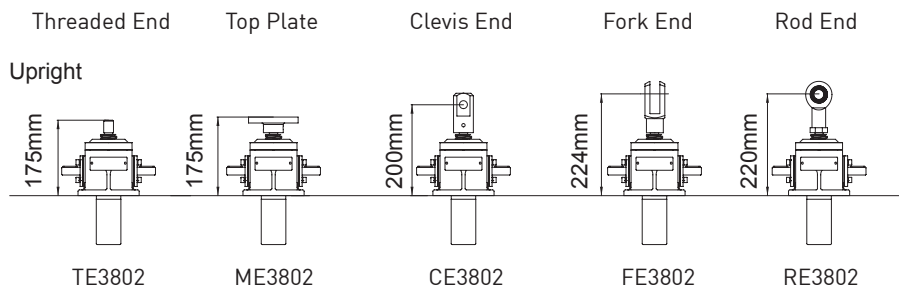


EBT0025-U00

Closed Height



Translating Screw

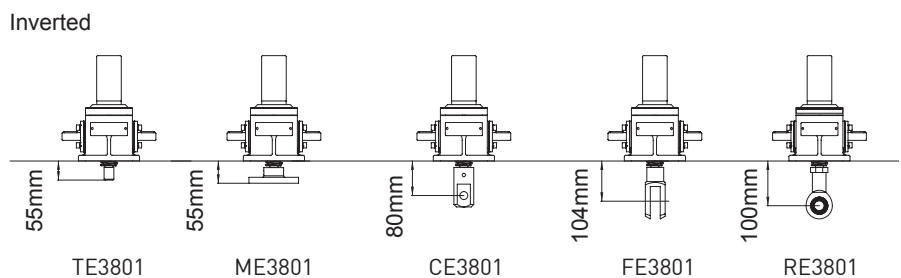


Note: for upright models with 10mm lead add 27mm to the closed height.

EBR0025-U00

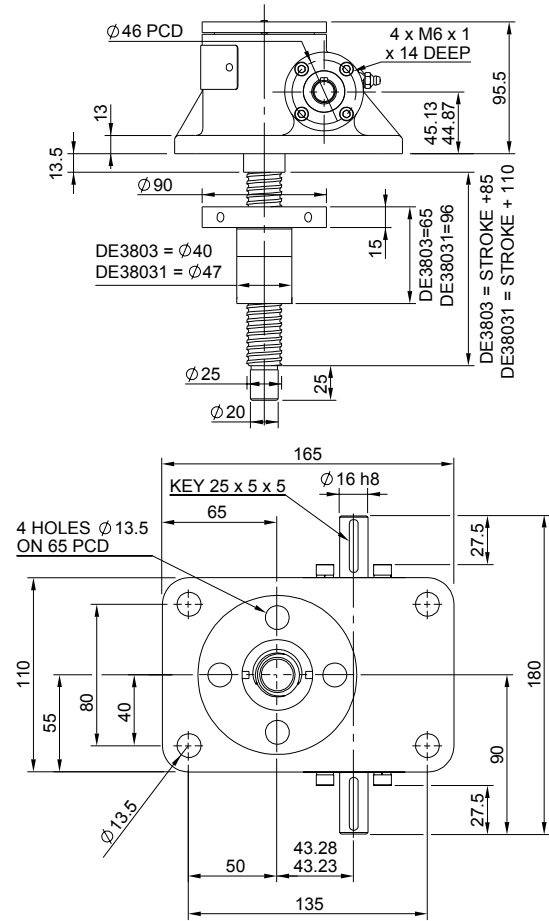
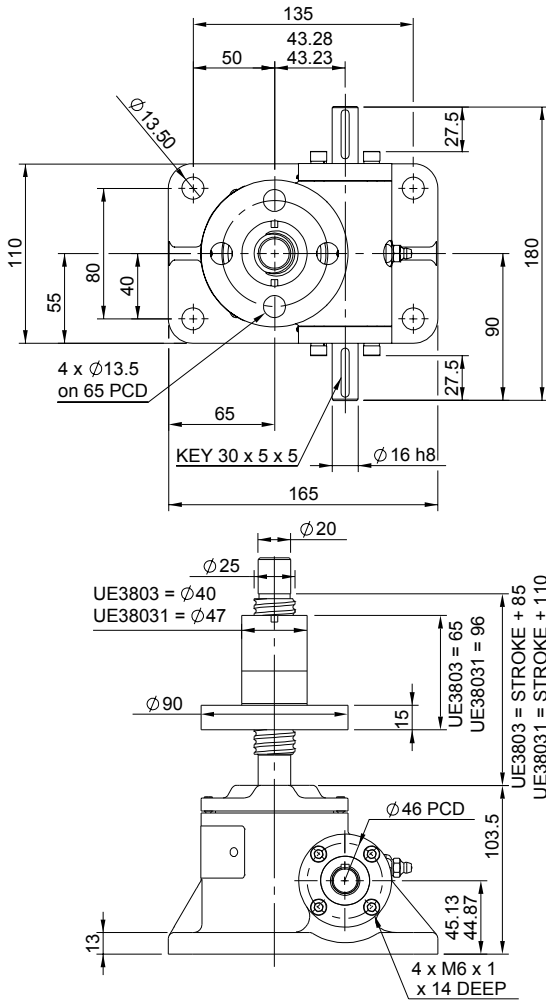


Rotating Screw



Upright EBR0025-U00

Inverted EBR0025-I00

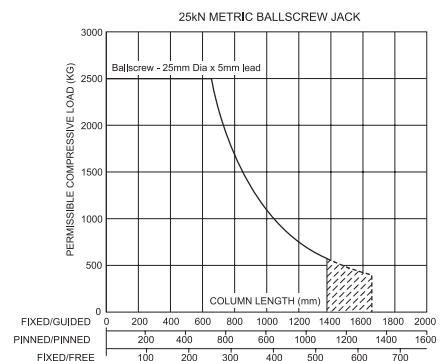
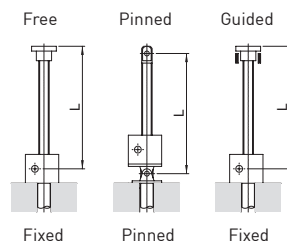


Performance

Column Strength

Note: All dimension in millimetres unless otherwise stated. Designs subject to change without notice

Model		E3802	E38021	
Capacity	kN	25		
Lifting Screw	Diameter (mm)	25		
	Lead	Option	1	2
		mm	5	10
Gear Ratio Option 1	Gear Ratio	6:1		
	Screw Jack Static Efficiency	0.565	0.600	
	Screw Jack Static Dynamic	0.662	0.692	
Gear Ratio Option 2	Gear Ratio	24:1		
	Screw Jack Static Efficiency	0.320	0.340	
	Screw Jack Static Dynamic	0.419	0.438	
Max. Input power (kW)	Gear Ratio Option 1	1.5		
	Gear Ratio Option 2	0.375		
Start up torque at full load (Nm)	Gear Ratio Option 1	5.9	11.1	
	Gear Ratio Option 2	2.6	4.9	



Critical Screw Speed

