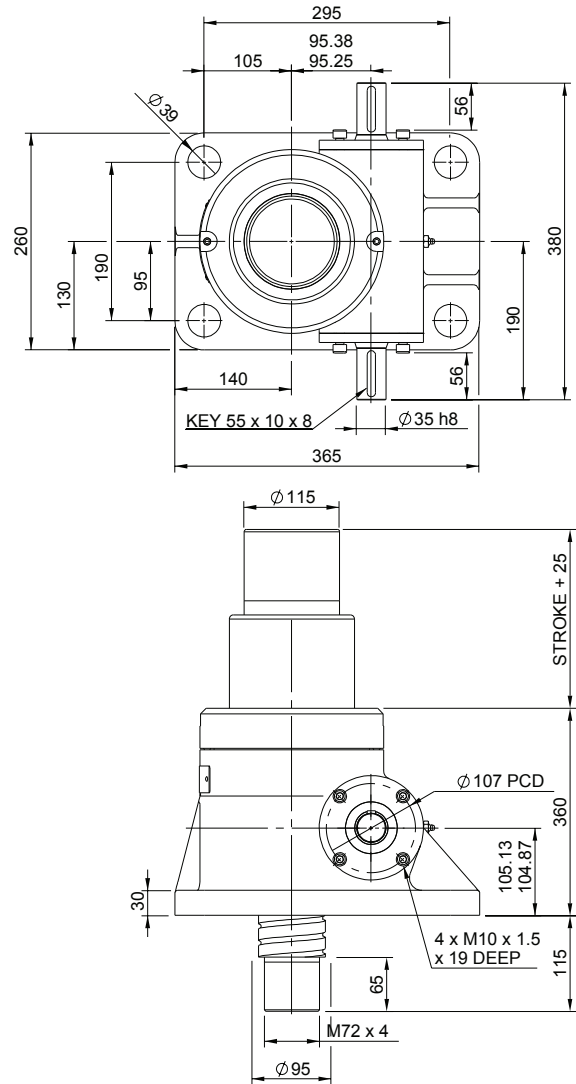
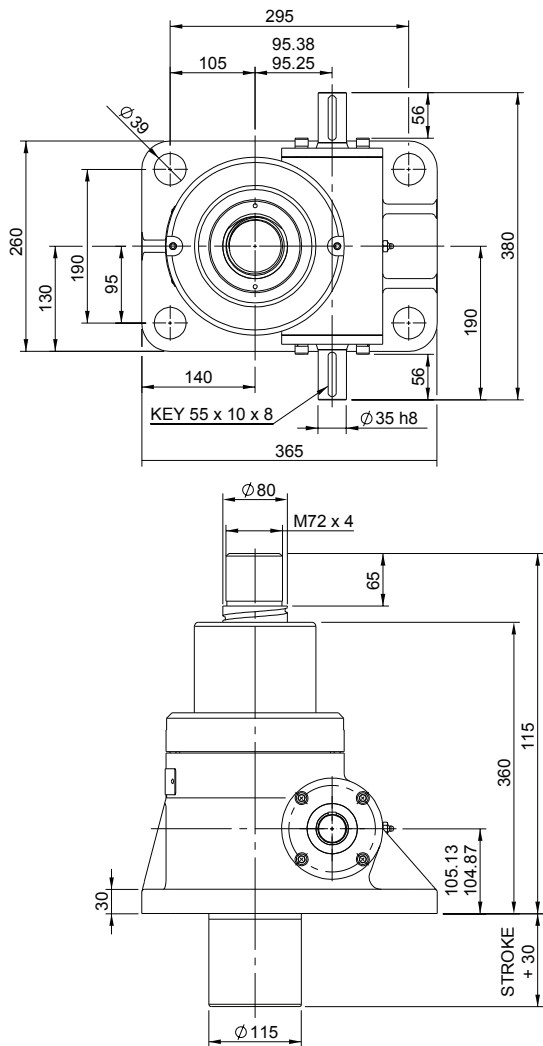


Upright EBT0300-U00

Inverted EBT0300-I00



EBT0300-U00

Closed Height

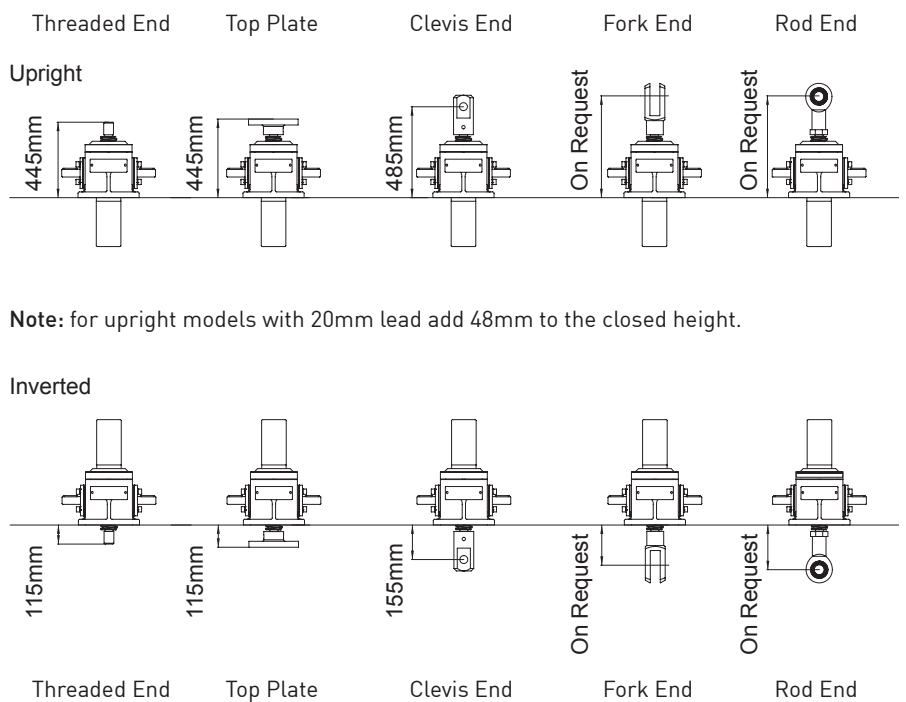


Translating Screw

EBR0300-U00



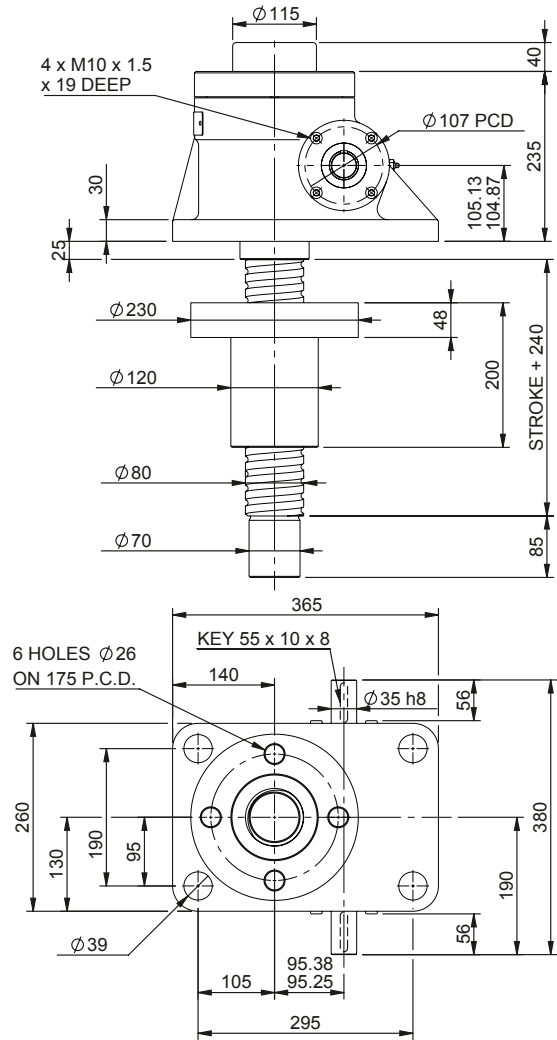
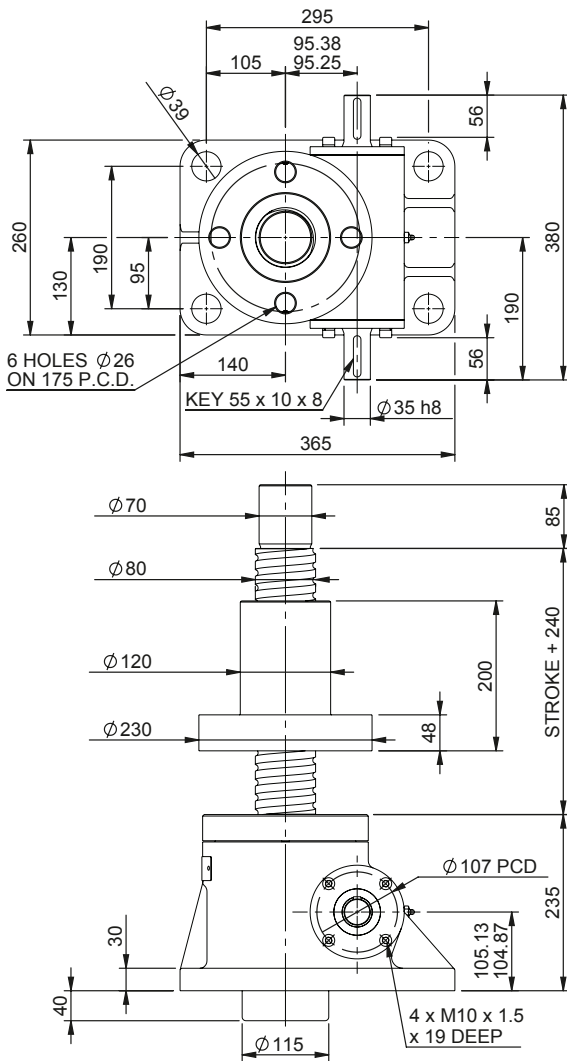
Rotating Screw



Note: for upright models with 20mm lead add 48mm to the closed height.

Upright EBR0300-U00

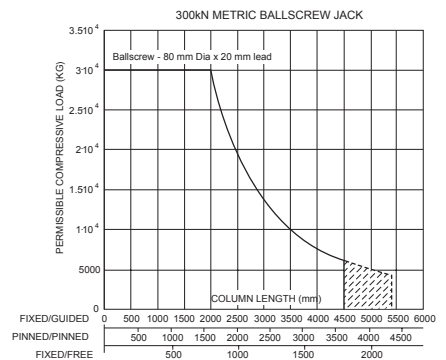
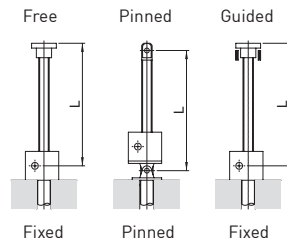
Inverted EBR0300-I00



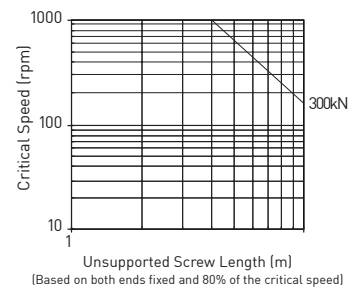
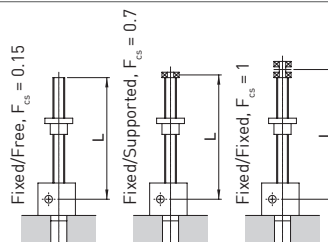
Performance

Column Strength

Model		EBR0300 EBT0300
Capacity	kN	300
Lifting Screw	Diameter (mm)	80
	Lead	Option 1 mm
Gear Ratio Option 1	Gear Ratio	10 2/3:1
	Screw Jack Static Efficiency	0.492
Gear Ratio Option 2	Screw Jack Static Efficiency	0.337
	Screw Jack Static Dynamic	0.440
Max. Input power (kW)	Gear Ratio Option 1	6.0
	Gear Ratio Option 2	1.9
Start up torque at full load (Nm)	Gear Ratio Option 1	0.278
	Gear Ratio Option 2	0.371



Critical Screw Speed



Note: All dimension in millimetres unless otherwise stated. Designs subject to change without notice