

# S-SERIES

## Translating Screw Jack 50kN

### Performance

Screw Jack Model <sup>4</sup>		S-050		
Capacity	kN	50		
Lead Screw <sup>1</sup>	Diameter (mm)	40		
	Lead (mm)	9	18	
Gear Ratios	Option 1	6:1		
	Option 2	24:1		
	Option 3	8:1 (AOR)		
4 x Turns of worm for travel of lead screw	Option 1	6mm	12mm	
	Option 2	1.5mm	3mm	
	Option 3	4.5mm	9mm	
Maximum Input Power (kW)	Option 1	3.0		
	Option 2	0.550		
	Option 3	3.0		
Start up torque at full load (Nm) <sup>2</sup>	Option 1	54	73	
	Option 2	24	33	
	Option 3	44	59	
Maximum Through Torque (Nm) <sup>7</sup>	Option 1	168.0		
	Option 2	76.5		
	Option 3	168.0		
Static Efficiency <sup>3</sup>	Option 1	0.222	0.325	
	Option 2	0.125	0.184	
	Option 3	0.206	0.302	
Dynamic Efficiency <sup>3</sup>	Option 1	50rpm	0.281	0.398
	Option 1	750rpm	0.324	0.460
	Option 1	1500rpm*	0.337	0.477
	Option 2	50rpm	0.171	0.242
	Option 2	750rpm	0.238	0.337
	Option 2	1500rpm*	0.263	0.372
	Option 3	50rpm	0.264	0.374
	Option 3	750rpm	0.312	0.442
	Option 3	1500rpm*	0.328	0.465
Maximum Input Speed (rpm)	-	3000		
Gear Case Material	-	SG Iron		
Weight (kg) – stroke = 150mm	ST050	25.5		
	SR050	27.9		
Weight (kg) – per extra 25mm	ST050	0.24		
	SR050	0.19		

### SMT0050 Closed Height

	Threaded End	Top Plate	Clevis End	Fork End	Rod End
Closed Height 'C'	192	192	217	257	251
Stroke (mm)	With Bellow Boots (B)				
0 - 300	192	192	217	257	251
301 - 600	206	206	231	271	265
601 - 1050	224	224	249	289	283
1051 - 1500	244	244	269	309	303
1501 - 1800	258	258	283	323	317

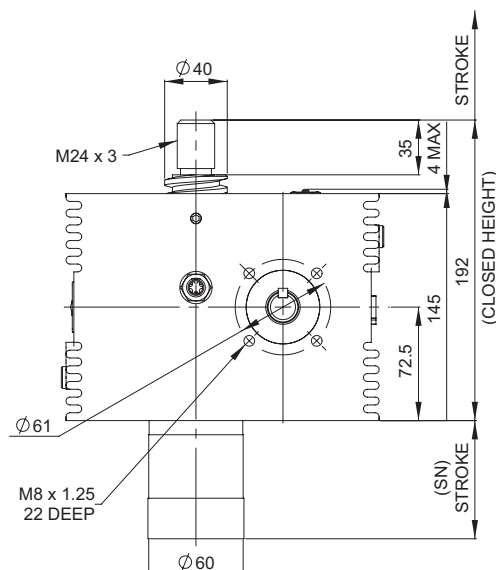
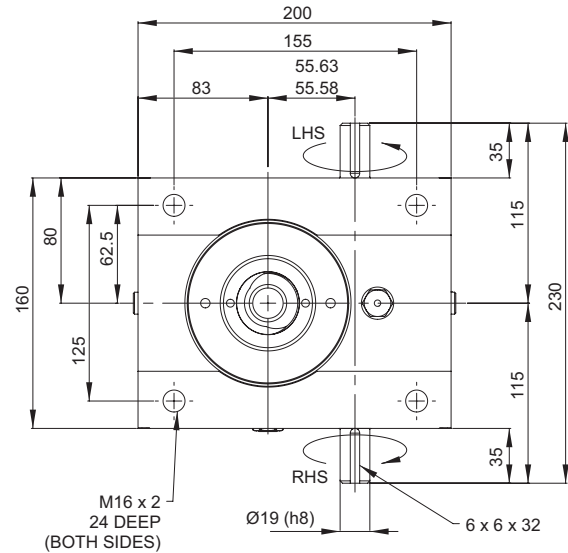
### SMT0050 Stop Nut



Stop nut provides a full power mechanical stop at the end of the lead screw. To be used as a safety feature in emergency conditions.

$$SN = \text{Stroke} + 34\text{mm}$$

### SMT0050-C00



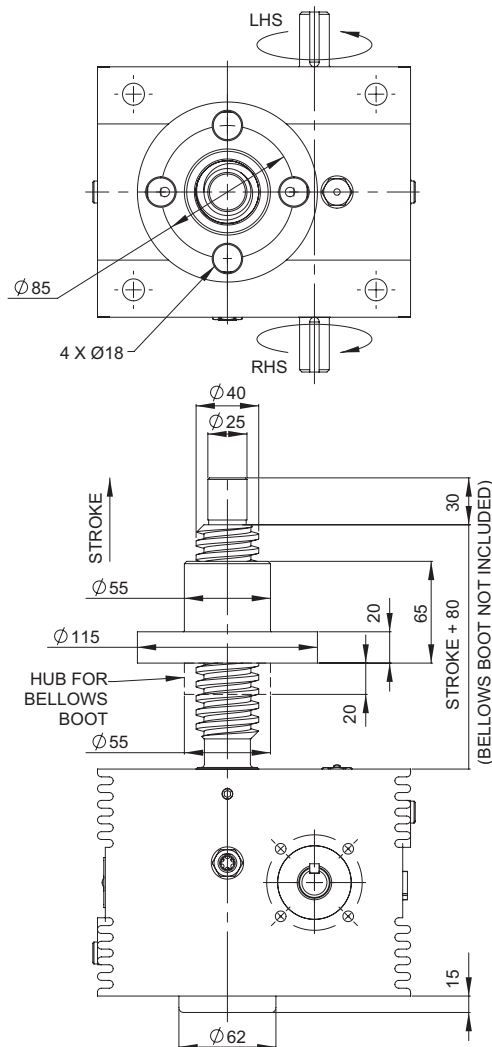
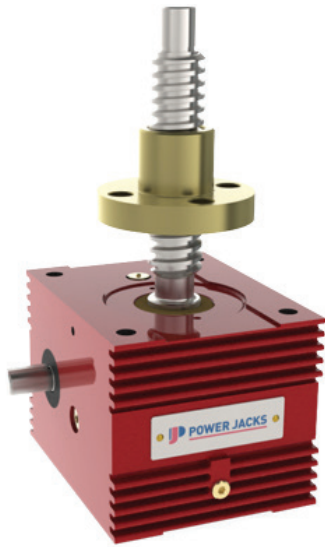
#### Note:

1. All dimension in millimetres unless otherwise stated.
2. Designs subject to change without notice.

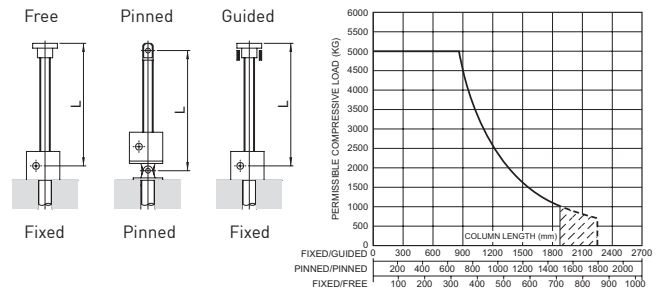
# S-SERIES

Rotating Screw Jack 50kN

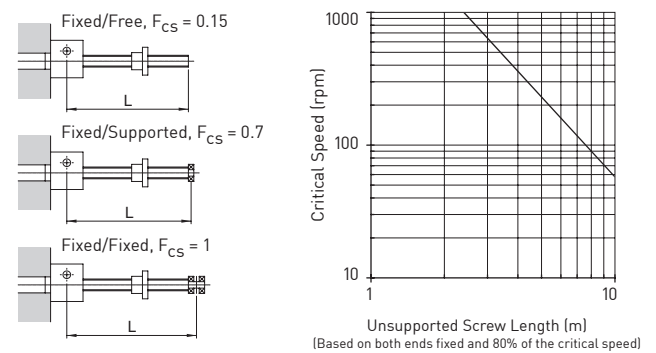
SMR0050-C00



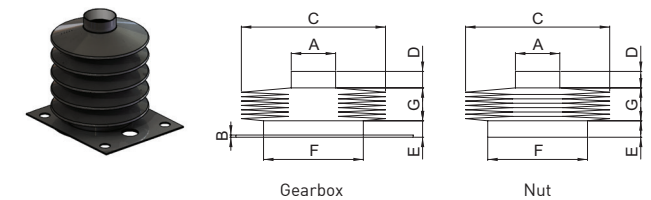
## Column Strength



## Critical Screw Speed



## Bellows Boot



	ØA	B	ØC	D	E	ØF
SMT0050	50	2	140	10	10	50
SMR0050	55	2	140	10	15	50

Stroke	1 - 300	301 - 600	601 - 1050	1051 - 1500	1501 - 1800
G	14	28	46	66	80*

\*control tapes fitted ØC=160

## Accessories & Options

