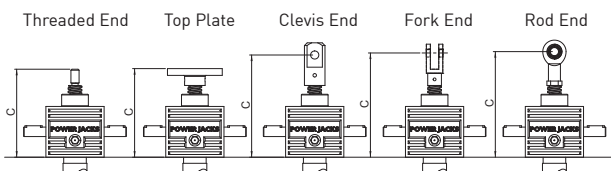


Performance

Screw Jack Model	CM-0002	
Capacity	kN	2.5
Lead Screw	Diameter (mm)	14
	Lead (mm)	3 6
Gear Ratios	Option 1	5:1
	Option 2	20:1
Turn of worm for travel of lead screw	Option 1 1 Turn	0.6mm 1.2mm
	Option 2 4 Turn	0.15mm 0.3mm
Maximum Input Power (kW)	Option 1	0.750
	Option 2	0.075
Start up torque at full load (Nm)	Option 1	1.2 1.6
	Option 2	0.6 0.8
Maximum Through Torque (Nm)	Option 1	3.6
	Option 2	1.8
Static Efficiency	Option 1	0.203 0.300
	Option 2	0.107 0.159
Dynamic Efficiency	Option 1	0.268 0.383
	Option 2	0.159 0.228
Lead Screw Restraining Torque (Nm)	-	3.6 4.9
Worm Shaft Radial Load (N)		75
Maximum Input Speed (rpm)	-	1800
Gear Case Material		Aluminium
Weight (kg) - stroke = 150mm	Translating	0.77
	Rotating	0.85
Weight (kg) - per extra 25mm	Translating	0.027
	Rotating	0.023

CMT0002 Closed Heights



Closed Height 'C'	Threaded End	Top Plate	Clevis End	Fork End	Rod End
CMT0002	77	92	77	98	94
Stroke (mm)	With Bellows Boots (B)				
0 - 250	104	118	104	124	120
251 - 500	134	148	134	154	150
501 - 800	132	153	132	155	152
1501 - 2000	290	290	310	313	315

CMT0002 Stop Nut

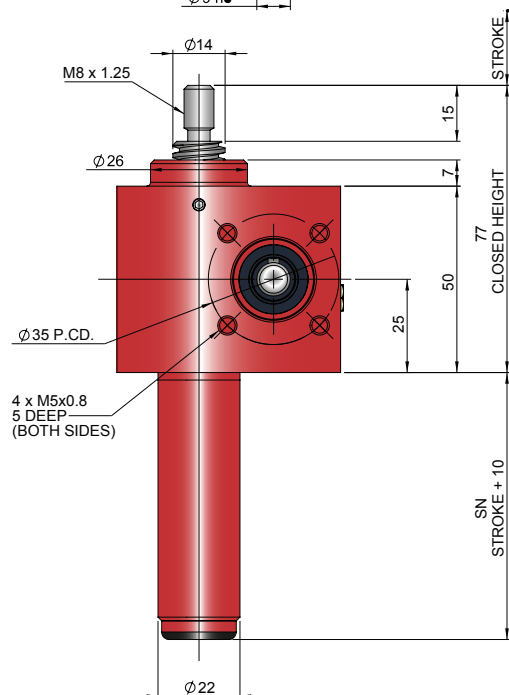
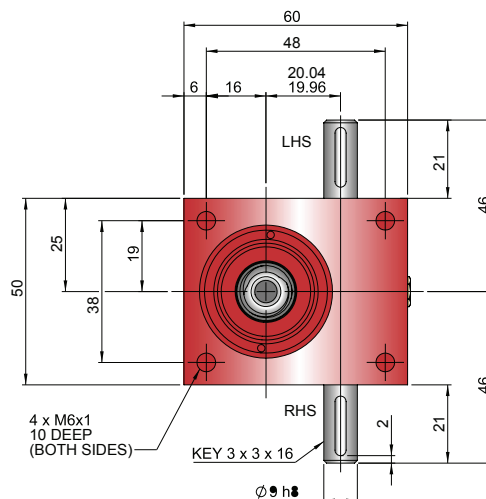


Stop nut provides a full power mechanical stop at the end of the lead screw. To be used as a safety feature in emergency conditions.
SN = Stroke + 25mm

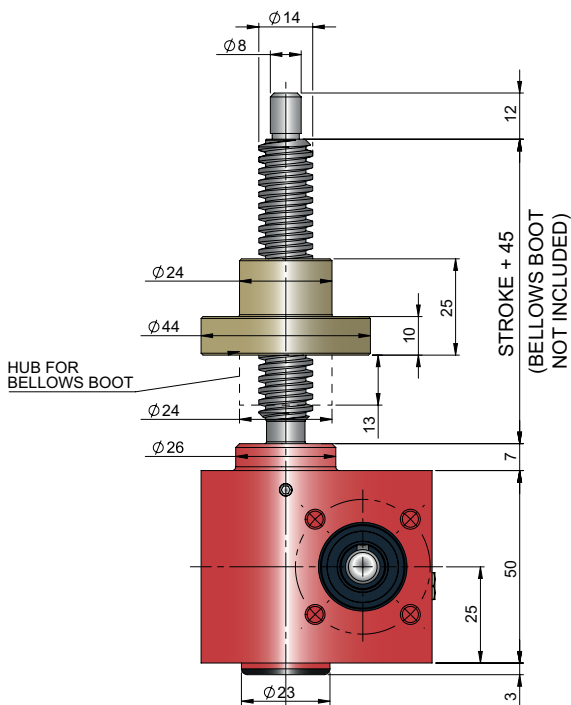
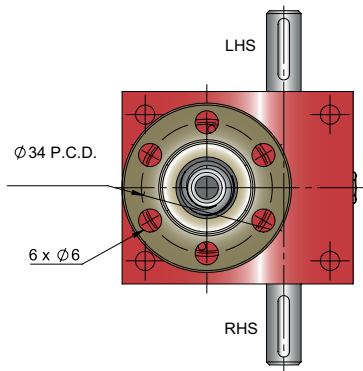
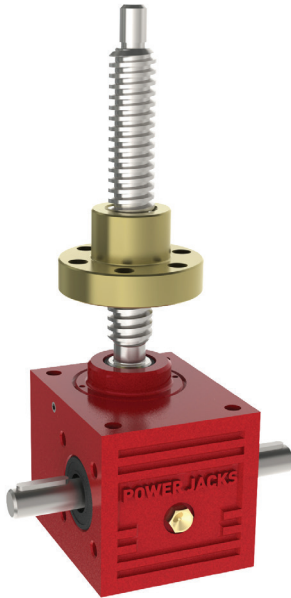
Note:

1. All dimension in millimetres unless otherwise stated.
2. Designs subject to change without notice.

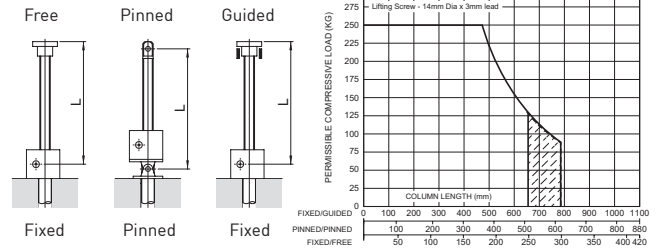
CMT0002-C00



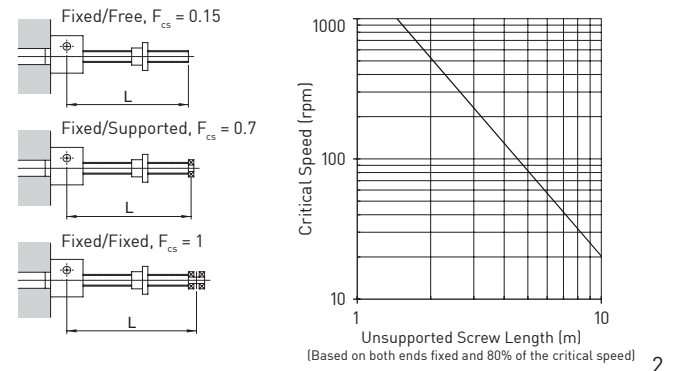
CMR0002-C00



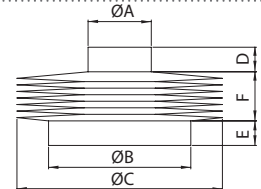
Column Strength



Critical Screw Speed



Bellows Boot



	ØA	ØB	ØC	D	E
CMT0002	24	26	100	10	7
CMT0002 (Rod End)	16	26	100	10	7
CMR0002	24	26	100	10	7

Stroke	1 - 500	501 - 1000	1001 - 1500	1500 - 2000
F	30	60	90	170*

Accessories & Options

	Anti-Backlash		End Fittings		Rotary Limit Switch Adaptor
	Anti-Rotation (Keyed)		Limit Switches		Double Hub Nut
	Safety Nut		Motor Adaptors		Drives
	Trunnion Mounts		Corrosion Protection		Secondary Guide