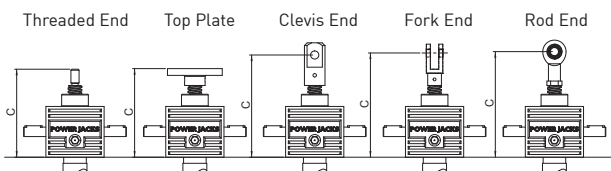


Performance

Screw Jack Model	CM-0025			
Capacity	kN		25	
Lead Screw	Diameter (mm)		30	
	Lead (mm)		6	12
Gear Ratios	Option 1		6:1	
	Option 2		24:1	
Turn of worm for travel of lead screw	Option 1	1 Turn	1mm	2mm
	Option 2	4 Turn	1mm	2mm
Maximum Input Power (kW)	Option 1		1.5	
	Option 2		0.375	
Start up torque at full load (Nm)	Option 1		19.8	26.4
	Option 2		8.7	11.7
Maximum Through Torque (Nm)	Option 1		59.4	
	Option 2		26.1	
Static Efficiency	Option 1		0.201	0.302
	Option 2		0.113	0.171
Dynamic Efficiency	Option 1		0.264	0.383
	Option 2		0.167	0.242
Lead Screw Restraining Torque (Nm)	-		76	102
Worm Shaft Radial Load (N)	-		380	
Maximum Input Speed (rpm)	-		1800	
Gear Case Material	-		SG Iron	
Weight (kg) - stroke = 150mm	Translating		8.3	
	Rotating		8.7	
Weight (kg) - per extra 25mm	Translating		0.21	
	Rotating		0.11	

CMT0025 Closed Heights



Closed Height 'C'	Threaded End	Top Plate	Clevis End	Fork End	Rod End
CMT0025	145	145	170	195	192
Stroke (mm)	With Bellow Boots (B)				
0 - 500	165	165	190	215	212
501 - 1000	190	190	215	240	237
1001 - 1500	215	215	240	265	262
1501 - 2000	245	245	270	295	292

CMT0025 Stop Nut

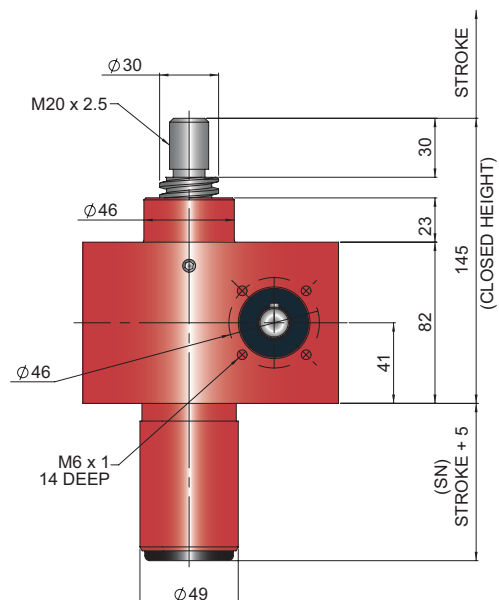
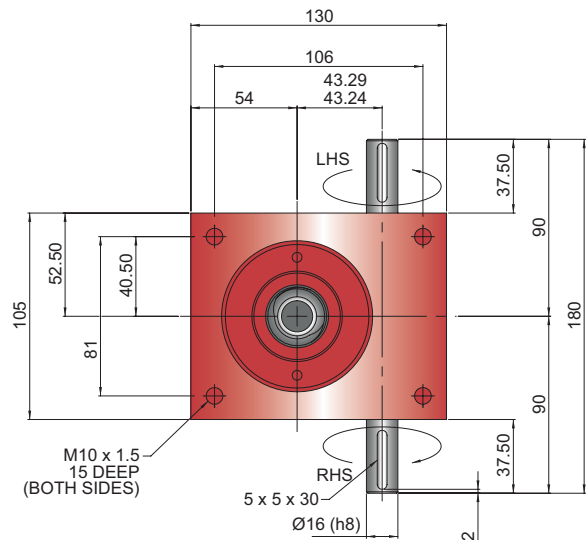


Stop nut provides a full power mechanical stop at the end of the lead screw. To be used as a safety feature in emergency conditions.
SN = Stroke + 21mm

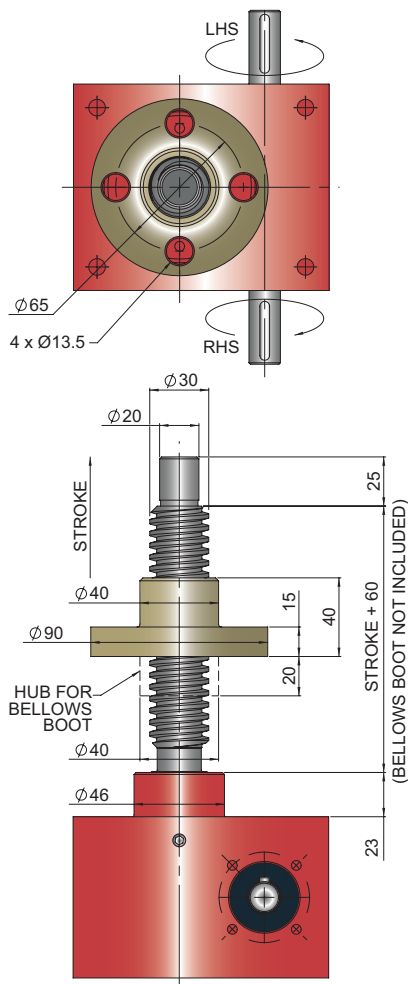
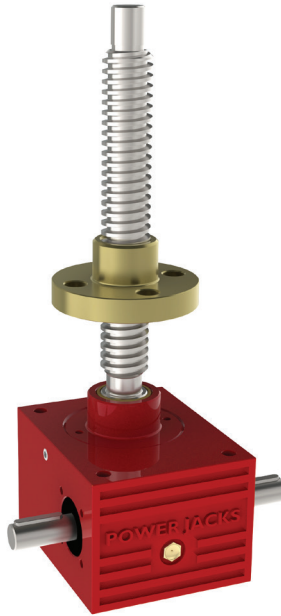
Note:

1. All dimension in millimetres unless otherwise stated.
2. Designs subject to change without notice.

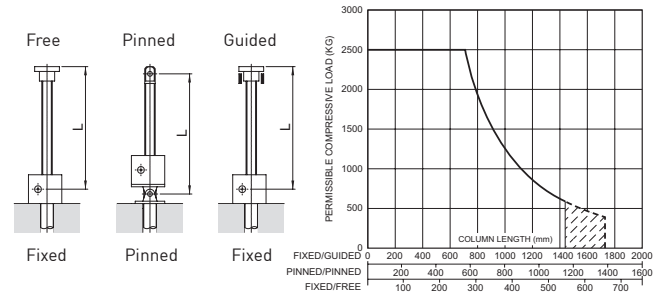
CMT0025-C00



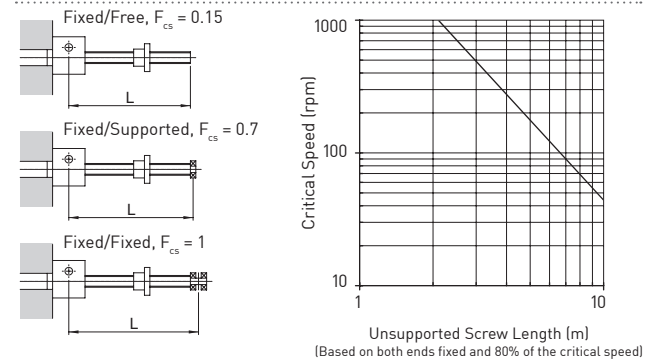
CMR0025-C00



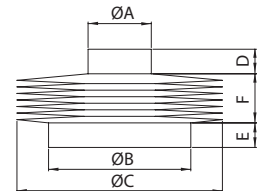
Column Strength



Critical Screw Speed



Bellows Boot



	ØA	ØB	ØC	D	E
CMT0025	40	46	120	15	15
CMT0025 (Rod End)	35	46	120	15	15
CMR0025	40	46	120	15	15

Stroke	1 - 500	501 - 1000	1001 - 1500	1500 - 2000
F	30	55	80	110*

Accessories & Options

