

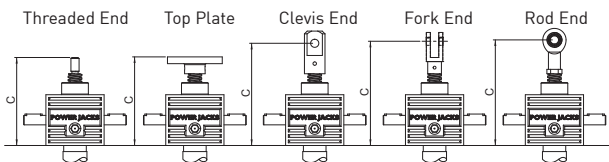
Performance

Screw Jack Model		CM-025	
Capacity	kN	50	
Lead Screw	Diameter (mm)	40	
	Lead (mm)	9	18
Gear Ratios	Option 1	6:1	
	Option 2	24:1	
Turn of worm for travel of lead screw	Option 1	1 Turn	1.5mm 3mm
	Option 2	4 Turn	1.5mm 3mm
Maximum Input Power (kW)	Option 1	3	
	Option 2	0.55	
Start up torque at full load (Nm)	Option 1	56.0	76
	Option 2	25.5	34.7
Maximum Through Torque (Nm)	Option 1	168.0	
	Option 2	76.5	
Static Efficiency	Option 1	0.213	0.314
	Option 2	0.117	0.172
Dynamic Efficiency	Option 1	0.281	0.398
	Option 2	0.172	0.244
Lead Screw Restraining Torque (Nm)	-	210	290
Worm Shaft Radial Load (N)		740	
Maximum Input Speed (rpm)	-	1800	
Gear Case Material		SG Iron	
Weight (kg) – stroke = 150mm	Translating	19.5	
	Rotating	20.2	
Weight (kg) – per extra 25mm	Translating	0.32	
	Rotating	0.19	

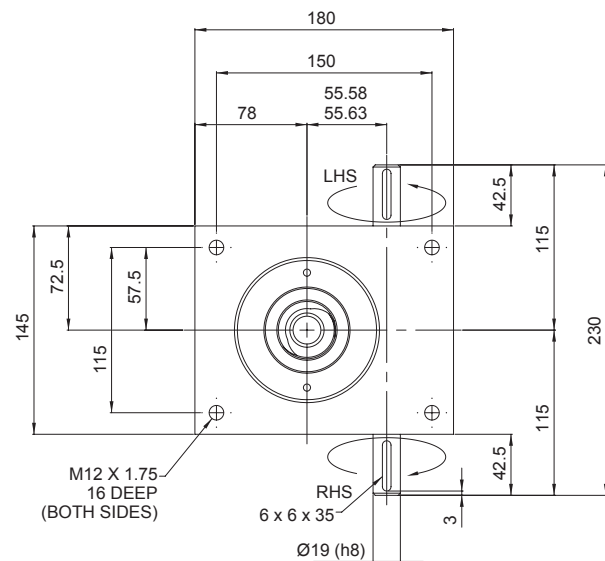
CMT0050-C00



CMT0050 Closed Heights



Closed Height 'C'	Threaded End	Top Plate	Clevis End	Fork End	Rod End
CMT0050	195	195	220	260	254
Stroke (mm)	With Bellow Boots (B)				
0 - 500	215	215	240	280	274
501 - 1000	235	235	260	300	294
1001 - 1500	260	260	285	325	319
1501 - 2000	325	325	350	390	384



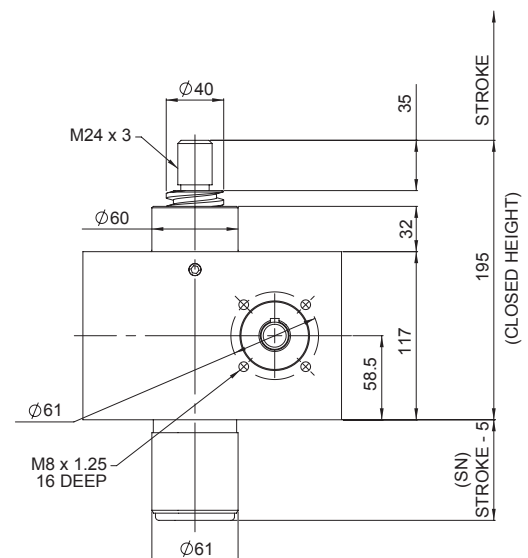
CMT0050 Stop Nut



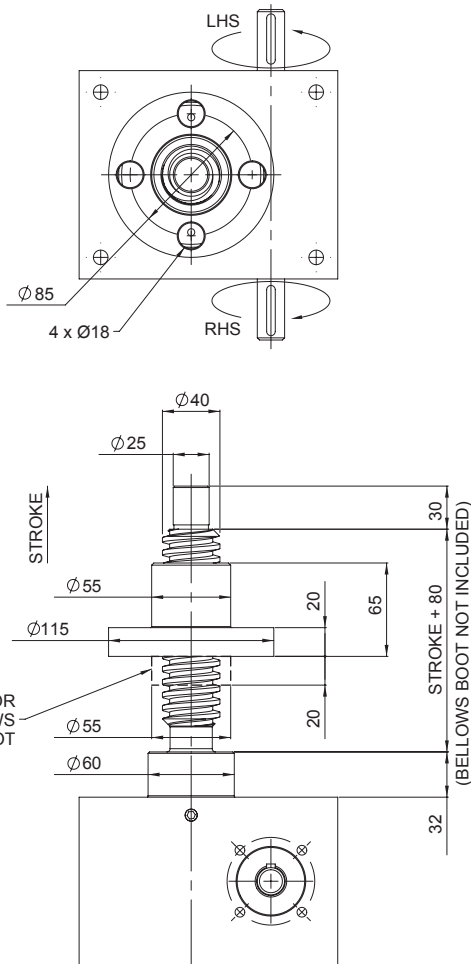
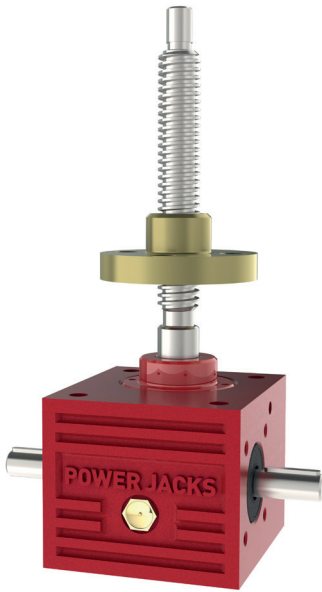
Stop nut provides a full power mechanical stop at the end of the lead screw. To be used as a safety feature in emergency conditions.
SN = Stroke + 34mm

Note:

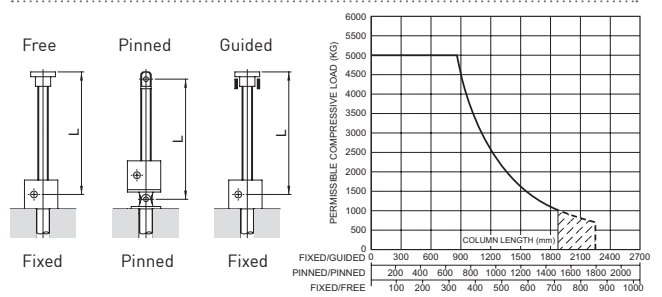
1. All dimension in millimetres unless otherwise stated.
2. Designs subject to change without notice.



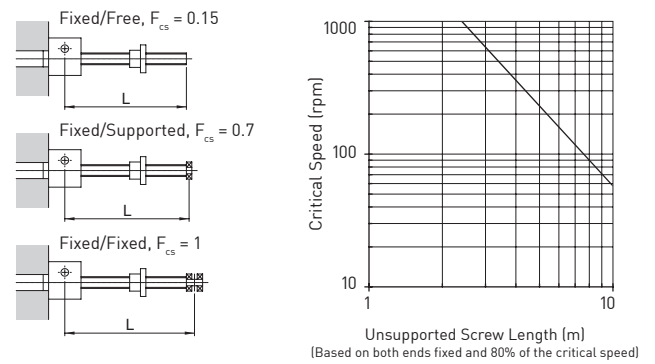
CMR0050-C00



Column Strength



Critical Screw Speed



	ØA	ØB	ØC	D	E
CMT0050	50	60*	140	15	15
CMT0050 (Rod End)	19	30	100	13	10
CMR0050	55	60	140	15	15

Stroke	1 - 500	501 - 1000	1001 - 1500	1500 - 2000
F	30	50	75	140**

Accessories & Options

	Anti-Backlash		End Fittings		Rotary Limit Switch Adaptor
	Anti-Rotation (Keyed)		Limit Switches		Double Hub Nut
	Safety Nut		Motor Adaptors		Drives
	Trunnion Mounts		Corrosion Protection		Secondary Guide