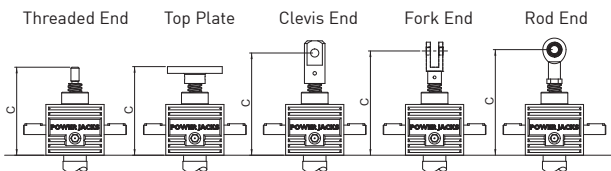


Performance

Screw Jack Model	CM-0005	
Capacity	kN	5
Lead Screw	Diameter (mm)	16
	Lead (mm)	3 6
Gear Ratios	Option 1	5:1
	Option 2	20:1
Turn of worm for travel of lead screw	Option 1 1 Turn	0.6mm 1.2mm
	Option 2 4 Turn	0.15mm 0.3mm
Maximum Input Power (kW)	Option 1	0.250
	Option 2	0.120
Start up torque at full load (Nm)	Option 1	2.5 3.3
	Option 2	1.1 1.4
Maximum Through Torque (Nm)	Option 1	7.5
	Option 2	3.3
Static Efficiency	Option 1	0.189 0.291
	Option 2	0.102 0.165
Dynamic Efficiency	Option 1	0.252 0.37
	Option 2	0.160 0.234
Lead Screw Restraining Torque (Nm)	-	8.0 10.5
Worm Shaft Radial Load (N)		150
Maximum Input Speed (rpm)	-	1800
Gear Case Material		Aluminium
Weight (kg) - stroke = 150mm	Translating	1.7
	Rotating	1.9
Weight (kg) - per extra 25mm	Translating	0.085
	Rotating	0.035

CMT0005 Closed Heights



Closed Height 'C'	Threaded End	Top Plate	Clevis End	Fork End	Rod End
CMT0005	97	118	97	120	117
Stroke (mm)	With Bellows Boots (B)				
0 - 250	107	128	108	130	127
251 - 500	117	138	117	140	137
501 - 800	132	153	132	155	152
1501 - 2000	290	290	310	313	315

CMT0005 Stop Nut

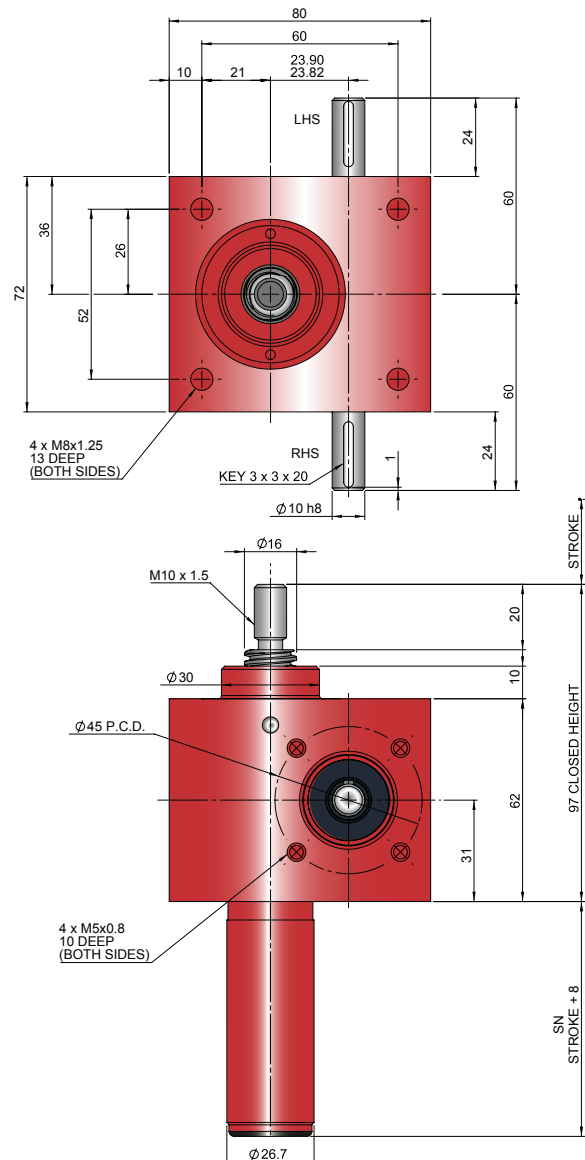


Stop nut provides a full power mechanical stop at the end of the lead screw. To be used as a safety feature in emergency conditions.
SN = Stroke + 25mm

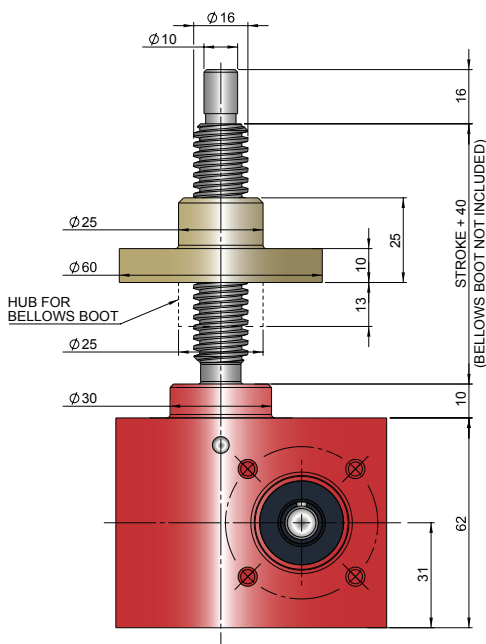
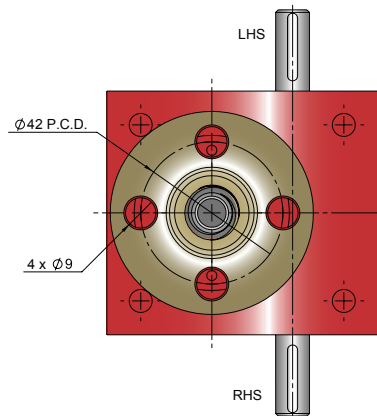
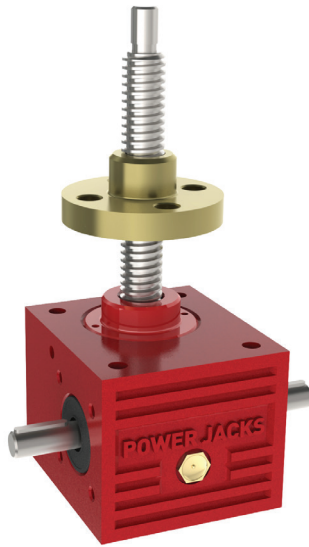
Note:

1. All dimension in millimetres unless otherwise stated.
2. Designs subject to change without notice.

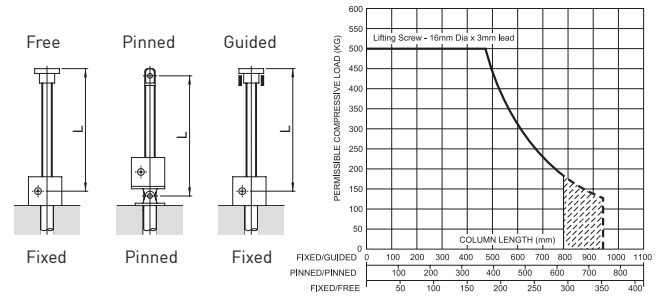
CMT0005-C00



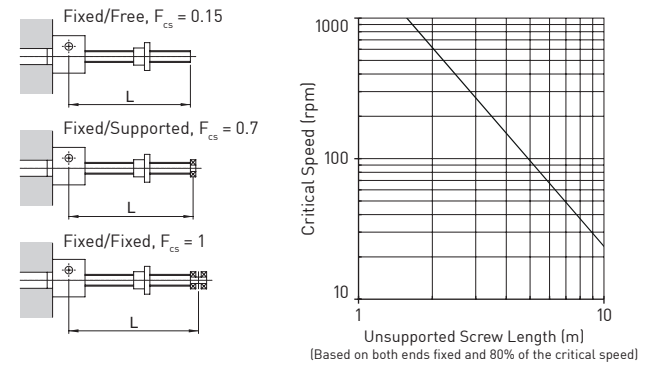
CMR0005-C00



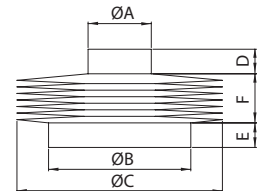
Column Strength



Critical Screw Speed



Bellows Boot



	ØA	ØB	ØC	D	E
CMT0005	25	30	100	13	10
CMT0005 (Rod End)	19	30	100	13	10
CMR0005	25	30	100	13	10

Stroke	1 - 500	501 - 1000	1001 - 1500	1500 - 2000
F	30	60	90	170*

Accessories & Options

	Anti-Backlash		End Fittings		Rotary Limit Switch Adaptor
	Anti-Rotation (Keyed)		Limit Switches		Double Hub Nut
	Safety Nut		Motor Adaptors		Drives
	Trunnion Mounts		Corrosion Protection		Secondary Guide