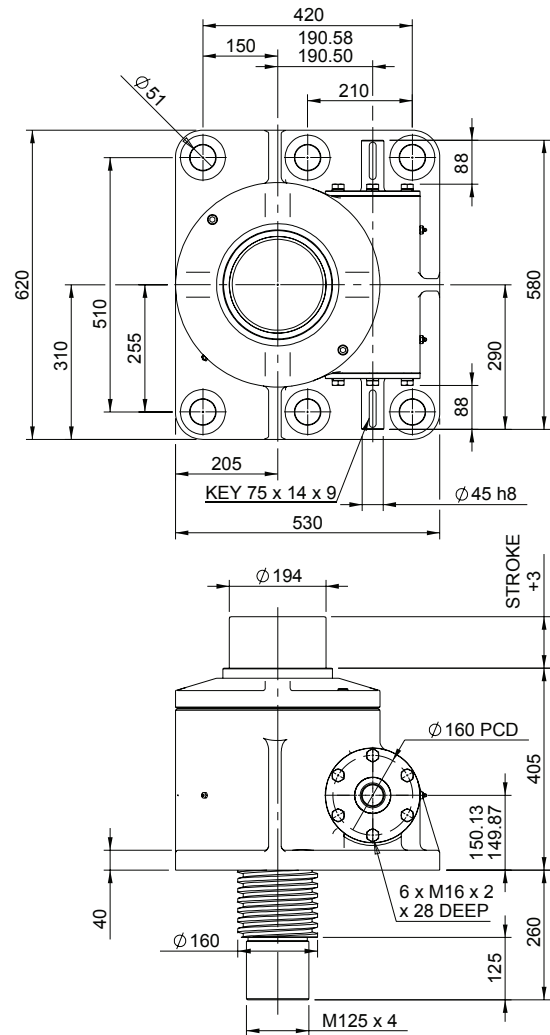
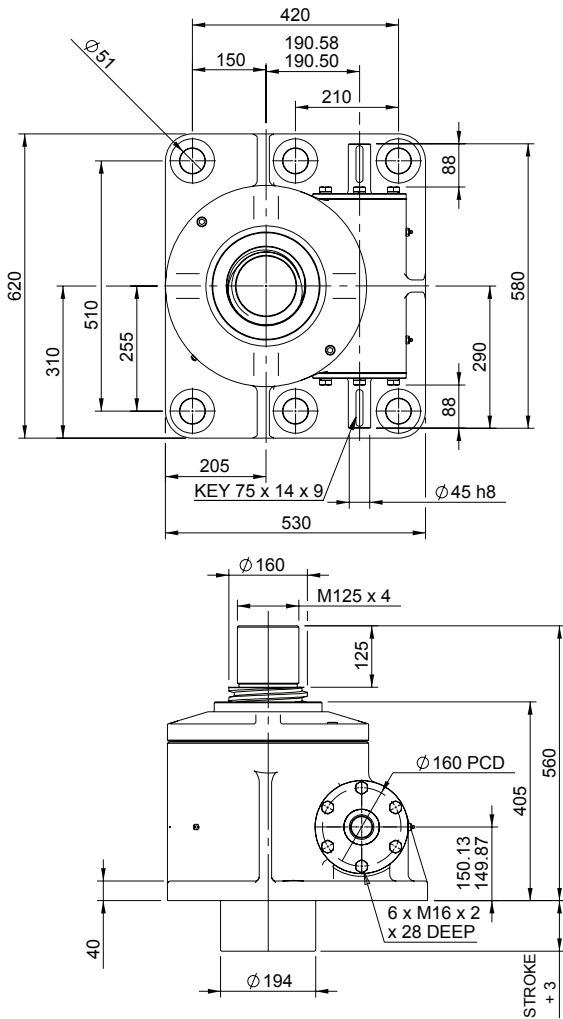


Upright EMT1000-U00

Inverted EMT1000-I00



EMT1000-U00

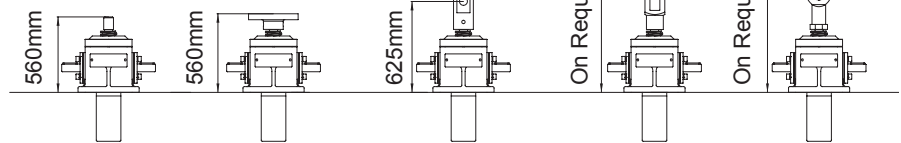
Closed Height



Translating Screw

Threaded End Top Plate Clevis End Fork End Rod End

Upright

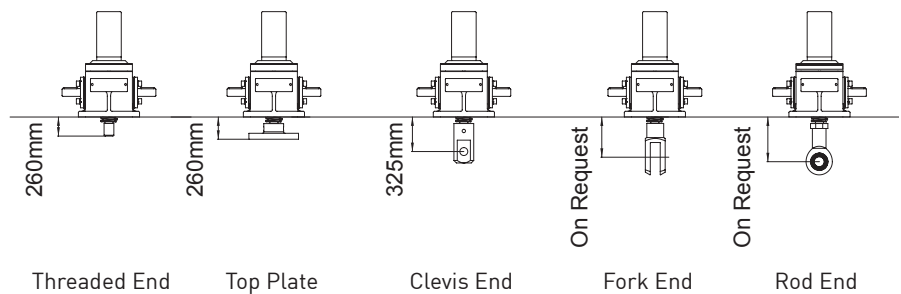


EMR1000-U00

Inverted

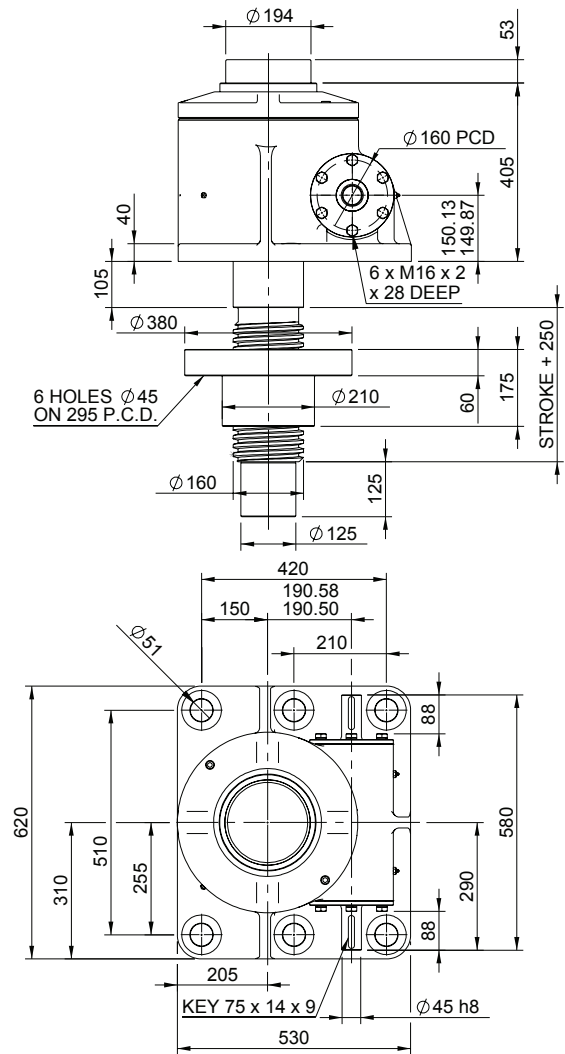
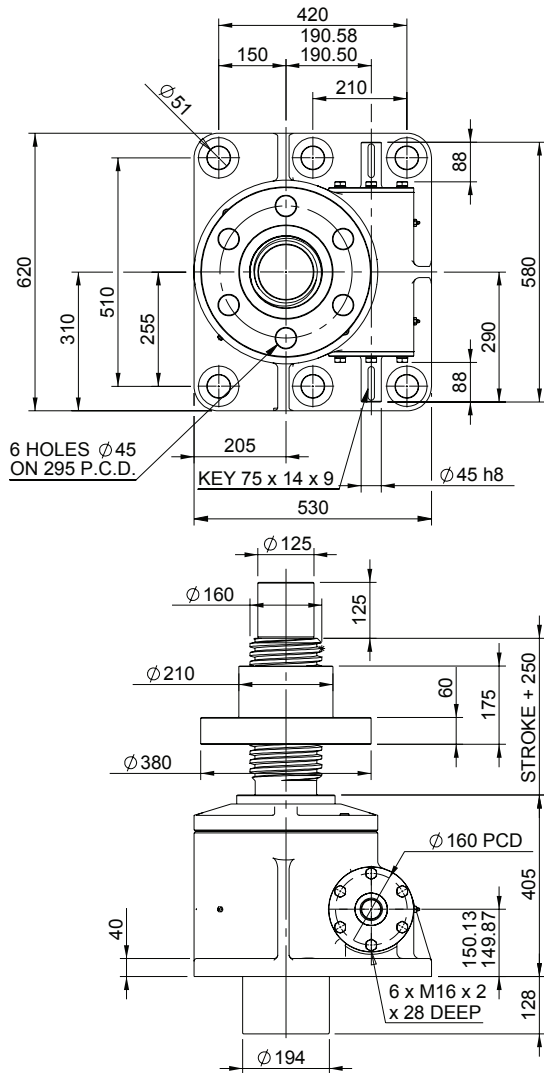


Rotating Screw



Upright EMR1000-U00

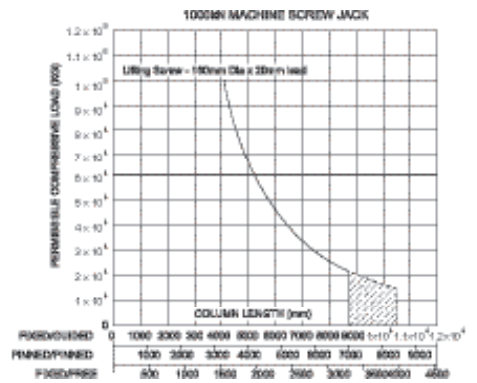
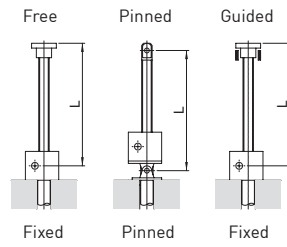
Inverted EMR1000-I00



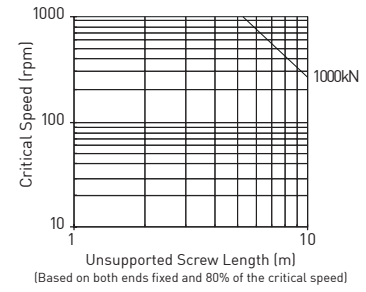
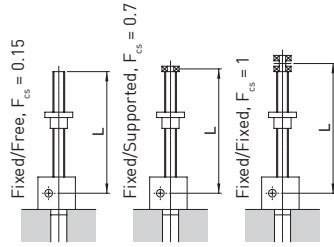
Performance

Column Strength

Model		EMT1000 EMR1000
Capacity	kN	1000
Lifting Screw	Diameter (mm)	160
	Lead	Option 1 mm 20
Gear Ratio Option 1	Gear Ratio	12:1
	Screw Jack Static Efficiency	0.131
	Screw Jack Static Dynamic	0.178
Gear Ratio Option 2	Gear Ratio	36:1
	Screw Jack Static Efficiency	0.079
	Screw Jack Static Dynamic	0.123
Max. Input power (kW)	Gear Ratio Option 1	18.5
	Gear Ratio Option 2	8.25
Start up torque at full load (Nm)	Gear Ratio Option 1	2025
	Gear Ratio Option 2	1119



Critical Screw Speed



Note: All dimension in millimetres unless otherwise stated. Designs subject to change without notice