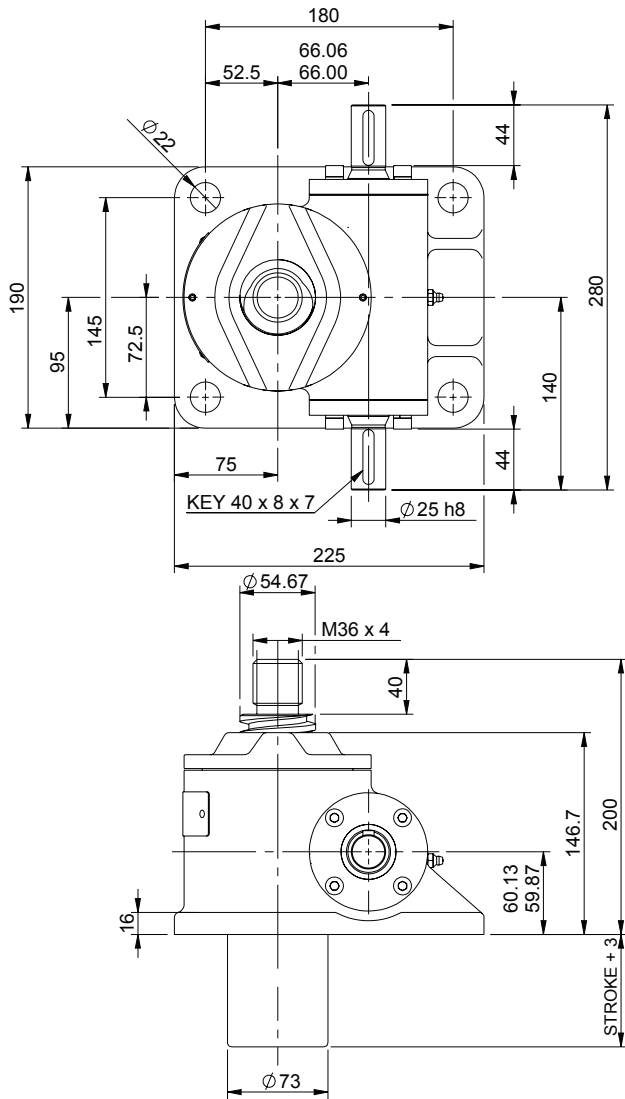


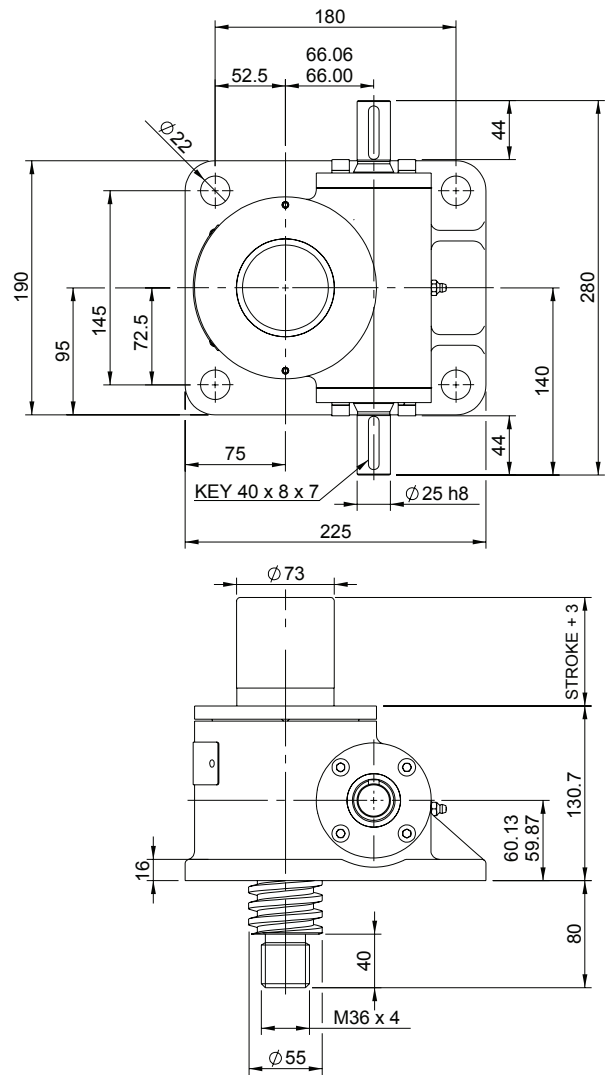
Upright EMT0100-U00



EMT0100-U00

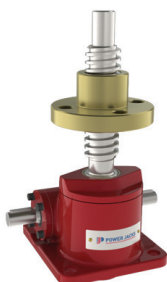
Closed Height

Inverted EMT0100-I00



Translating Screw

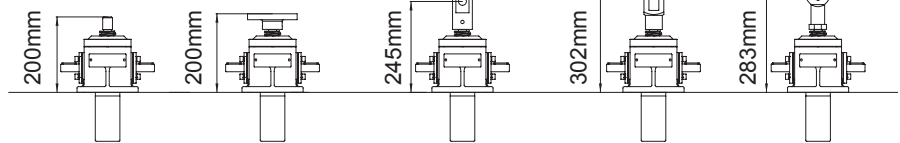
EMR0100-U00



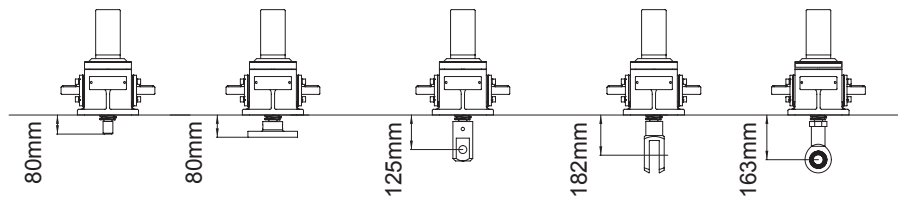
Rotating Screw

Threaded End Top Plate Clevis End Fork End Rod End

Upright



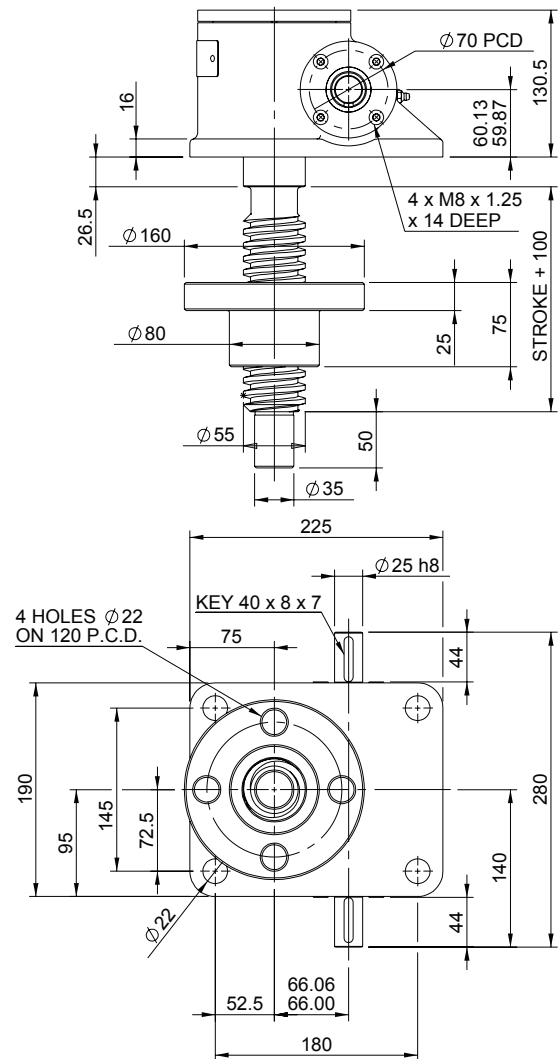
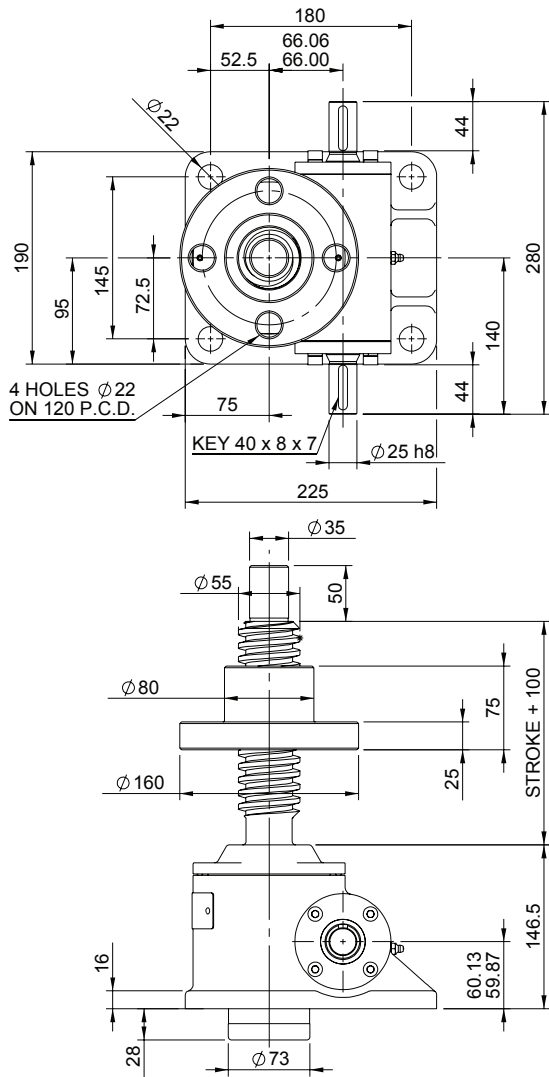
Inverted



Threaded End Top Plate Clevis End Fork End Rod End

Upright EMR0100-U00

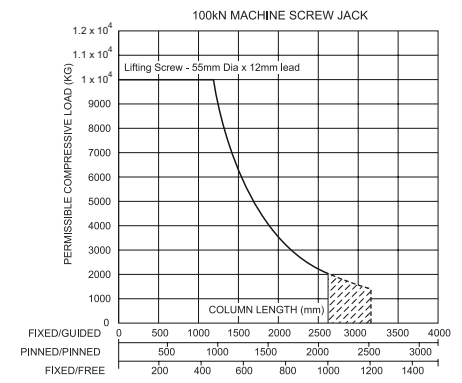
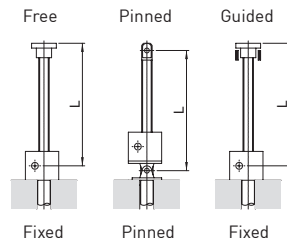
Inverted EMR0100-I00



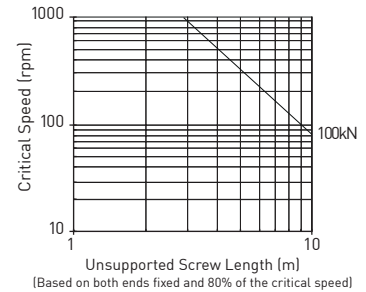
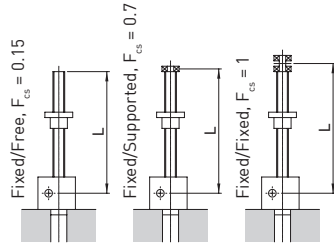
Performance

Column Strength

Model		EMT0100 EMR0100	
Capacity	kN	100	
Lifting Screw	Diameter (mm)	55	
	Lead	Option 1 mm	Option 2 mm
Gear Ratio Option 1	Gear Ratio	8:1	
	Screw Jack Static Efficiency	0.206	0.305
	Screw Jack Static Dynamic	0.272	0.388
Gear Ratio Option 2	Gear Ratio	24:1	
	Screw Jack Static Efficiency	0.132	0.195
	Screw Jack Static Dynamic	0.190	0.271
Max. Input power (kW)	Gear Ratio Option 1	3.75	
	Gear Ratio Option 2	1.125	
Start up torque at full load (Nm)	Gear Ratio Option 1	115.9	156.5
	Gear Ratio Option 2	60.5	81.8



Critical Screw Speed



Note: All dimension in millimetres unless otherwise stated. Designs subject to change without notice