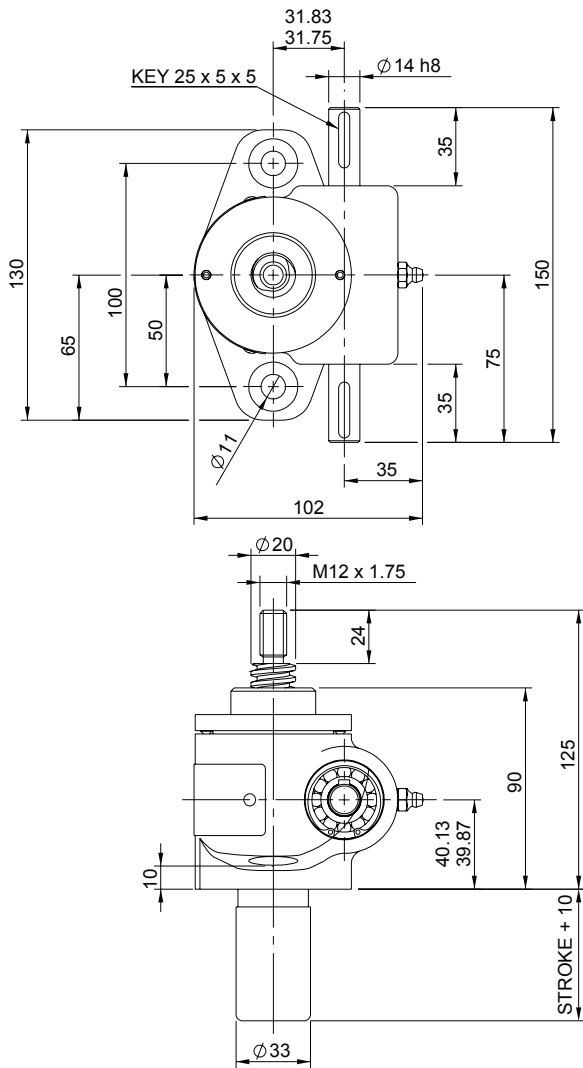
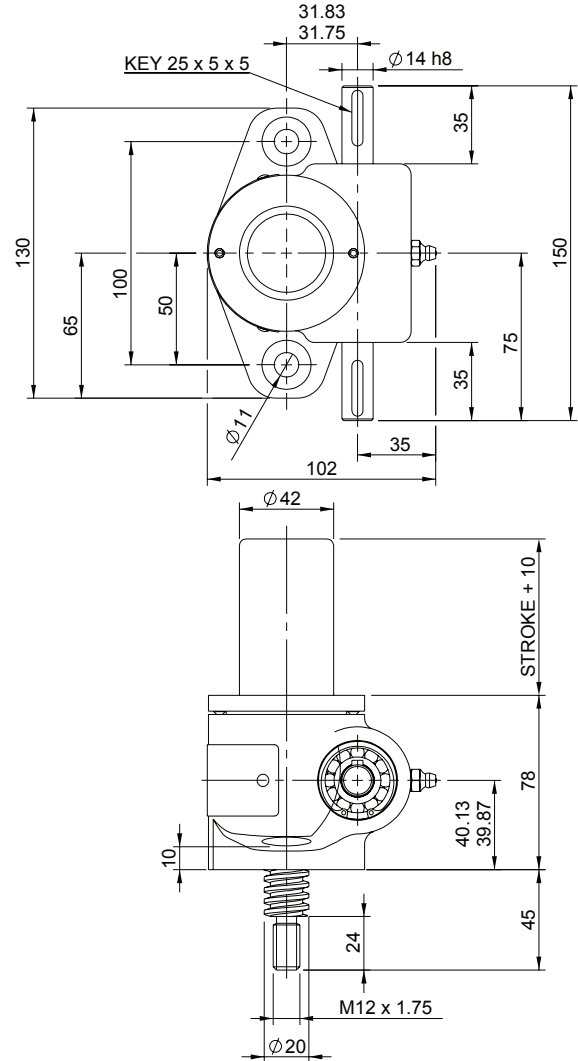


Upright EMT0010-U00



Inverted EMT0010-I00



EMT0010-U00

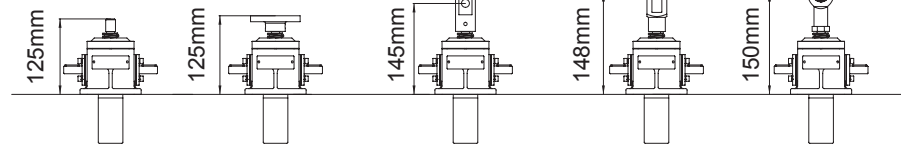


Translating Screw

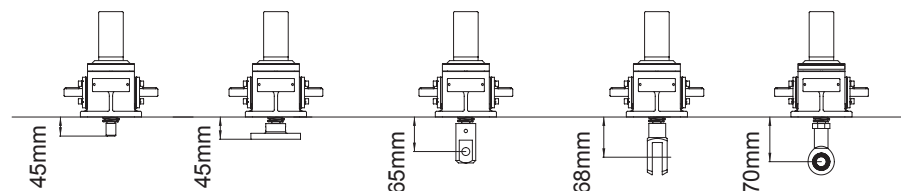
Closed Height

Threaded End Top Plate Clevis End Fork End Rod End

Upright



Inverted



EMR0010-U00

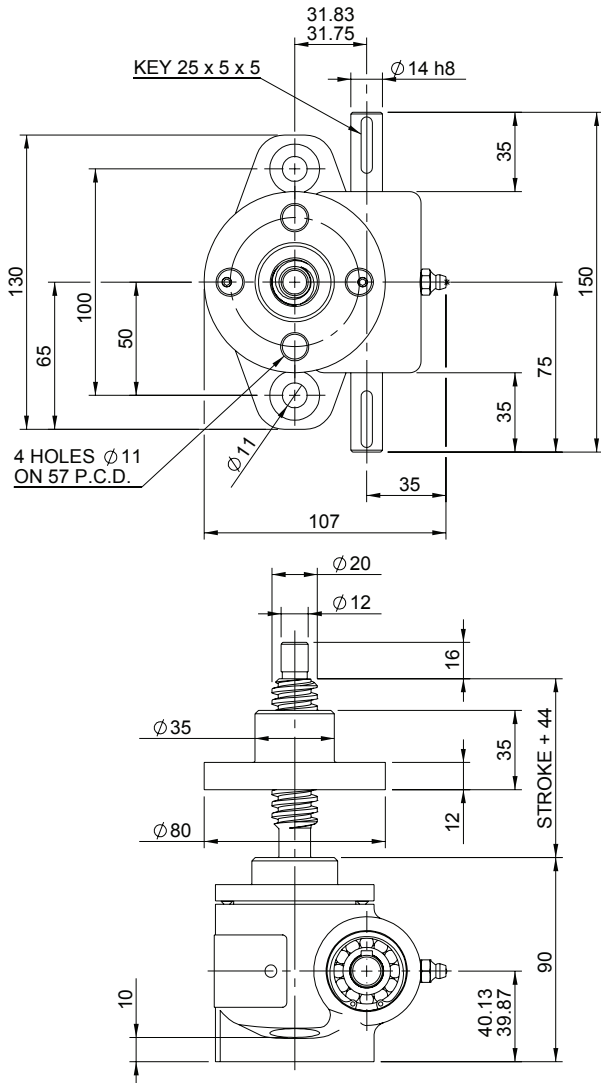


Rotating Screw

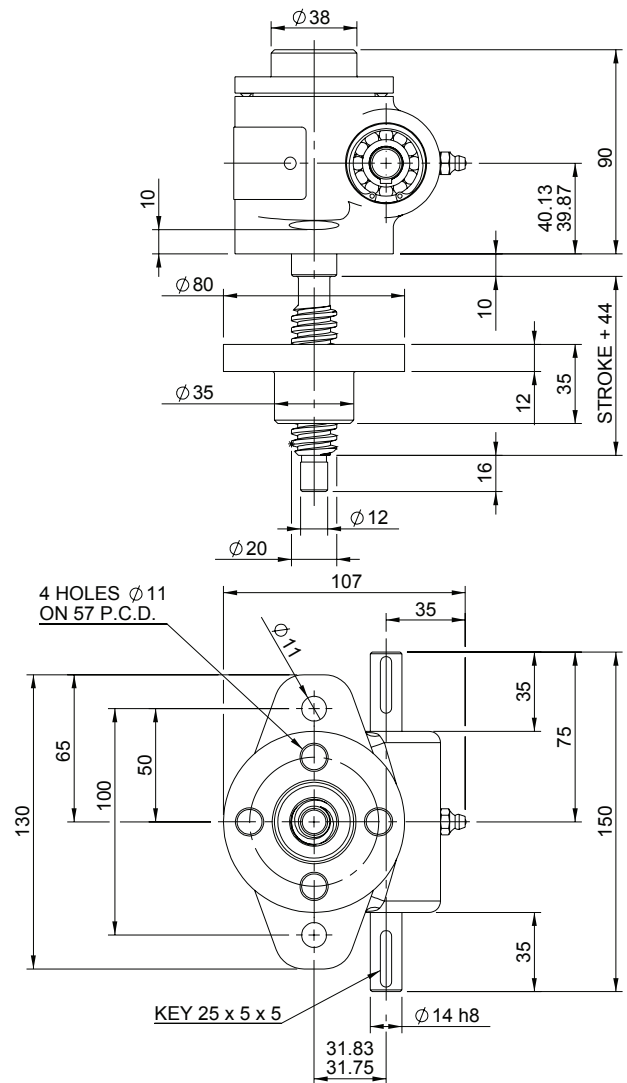
Threaded End Top Plate Clevis End Fork End Rod End

10kN Rotating

Upright EMR0010-U00



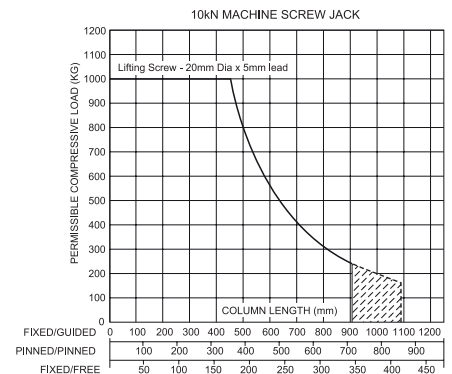
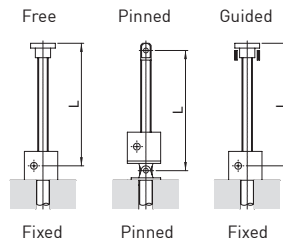
Inverted EMR0010-I00



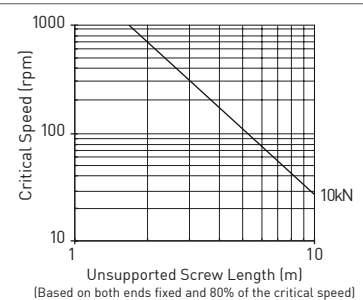
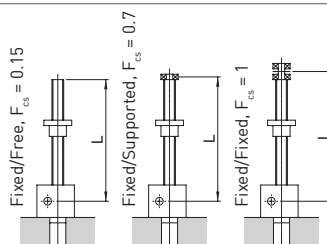
Performance

Model	EMT0010 EMR0010	
Capacity	kN	
Lifting Screw	Diameter (mm)	20
	Lead	Option 1: 5, Option 2: 10
Gear Ratio Option 1	Gear Ratio	5:1
	Screw Jack Static Efficiency	0.233, 0.339
	Screw Jack Static Dynamic	0.306, 0.424
Gear Ratio Option 2	Gear Ratio	20:1
	Screw Jack Static Efficiency	0.130, 0.192
	Screw Jack Static Dynamic	0.194, 0.268
Max. Input power (kW)	Gear Ratio Option 1	0.375
	Gear Ratio Option 2	0.19
Start up torque at full load (Nm)	Gear Ratio Option 1	6.8, 9.4
	Gear Ratio Option 2	3, 4.2

Column Strength



Critical Screw Speed



Note: All dimension in millimetres unless otherwise stated. Designs subject to change without notice