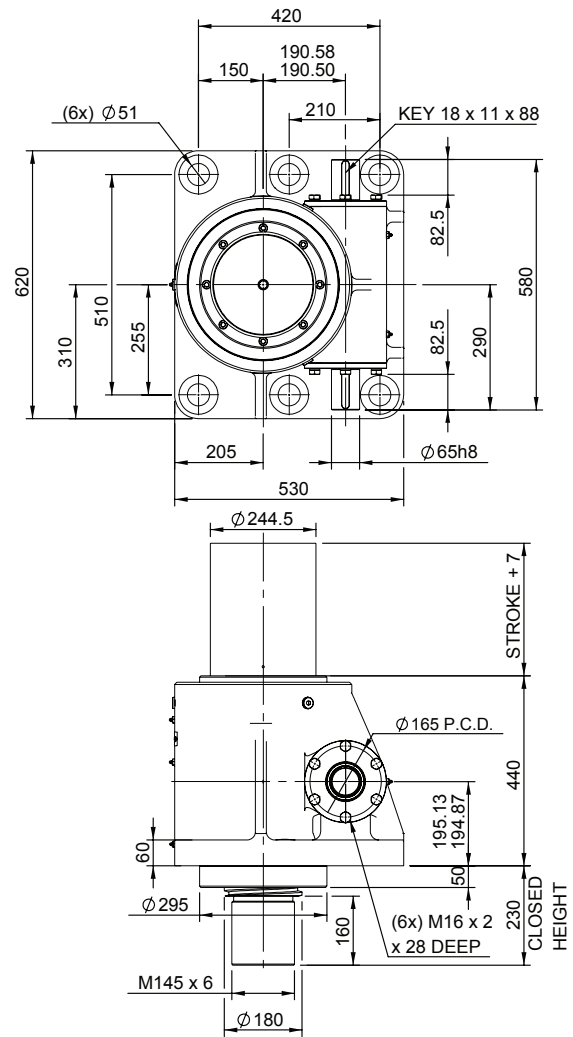
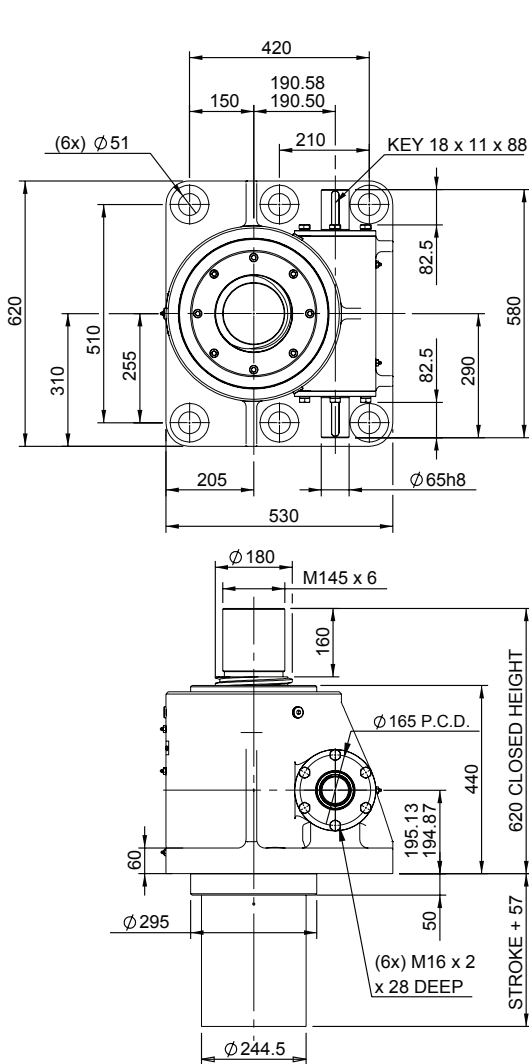


Upright EMT1500-U00

Inverted EMT1500-I00



EMT1500-U00

Closed Height

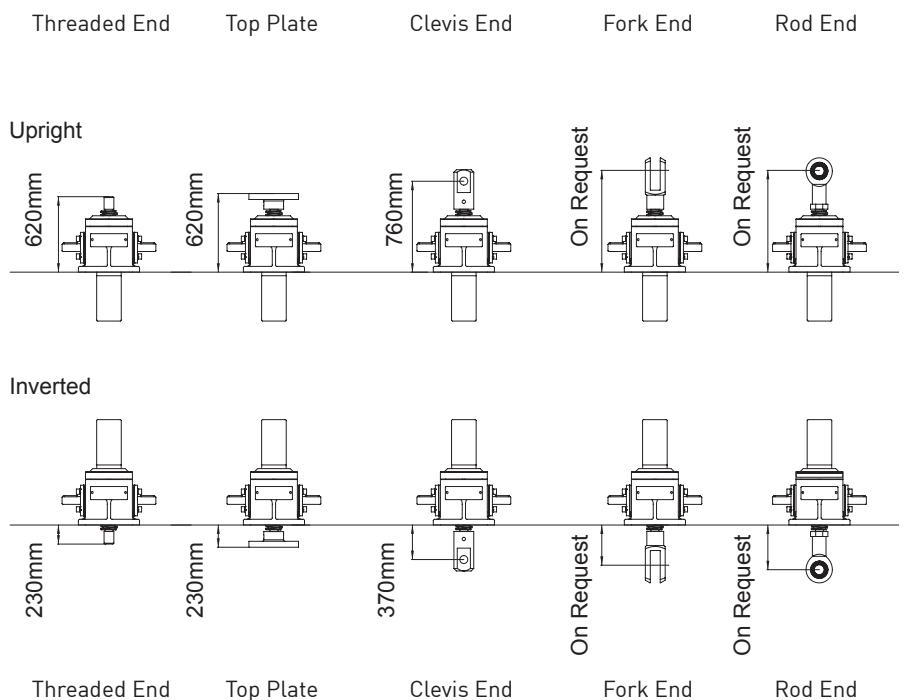


Translating Screw

EMR1500-U00



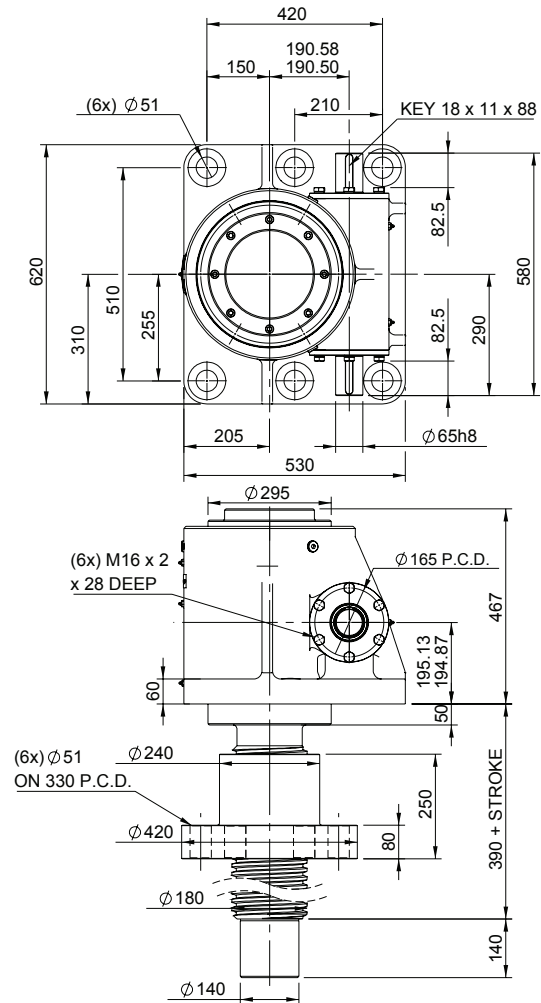
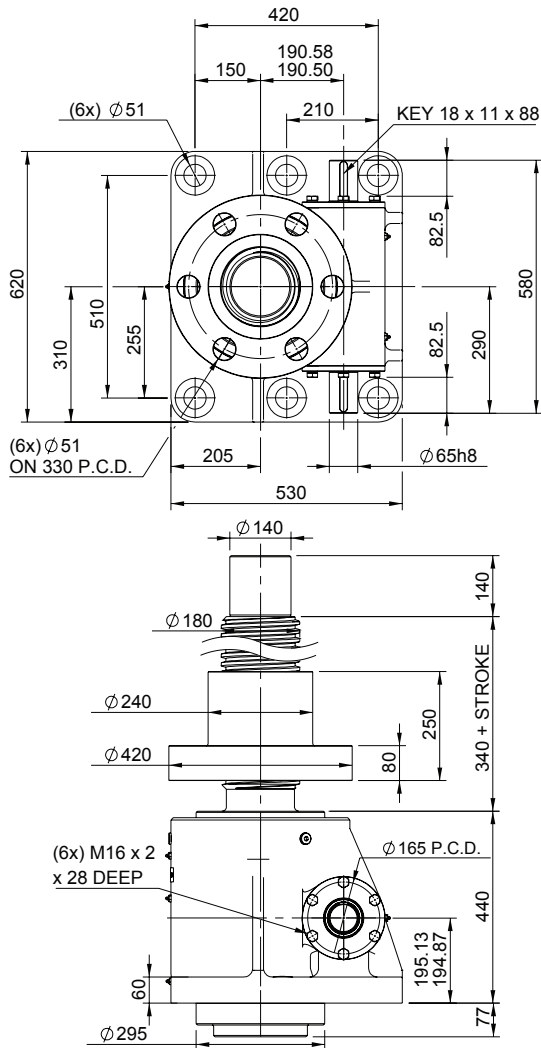
Rotating Screw



1500kN Rotating

Upright EMR1500-U00

Inverted EMR1500-I00

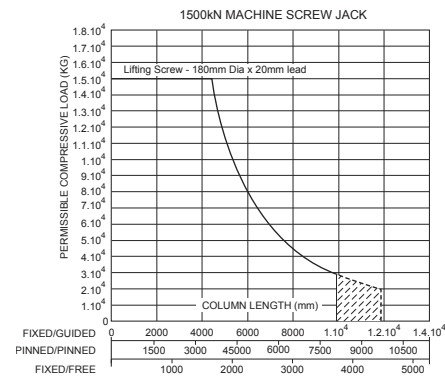
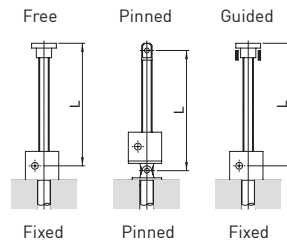


Performance

Column Strength

Note: All dimension in millimetres unless otherwise stated. Designs subject to change without notice

Model		EMT1500 EMR1500
Capacity	kN	1500
Lifting Screw	Diameter (mm)	180
	Lead	Option 1 mm 20
Gear Ratio Option 1	Gear Ratio	11.67:1
	Screw Jack Static Efficiency	0.112
	Screw Jack Static Dynamic	0.155
Gear Ratio Option 2	Gear Ratio	on request
	Screw Jack Static Efficiency	on request
	Screw Jack Static Dynamic	on request
Max. Input power (kW)	Gear Ratio Option 1	25.3
	Gear Ratio Option 2	on request
Start up torque at full load (Nm)	Gear Ratio Option 1	3655
	Gear Ratio Option 2	on request



Critical Screw Speed

