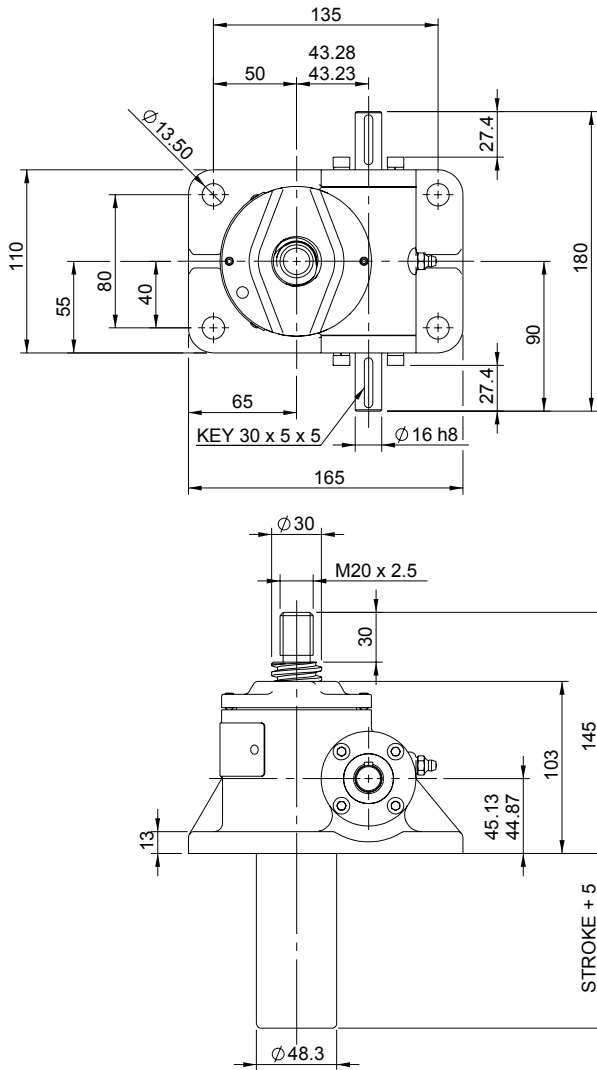
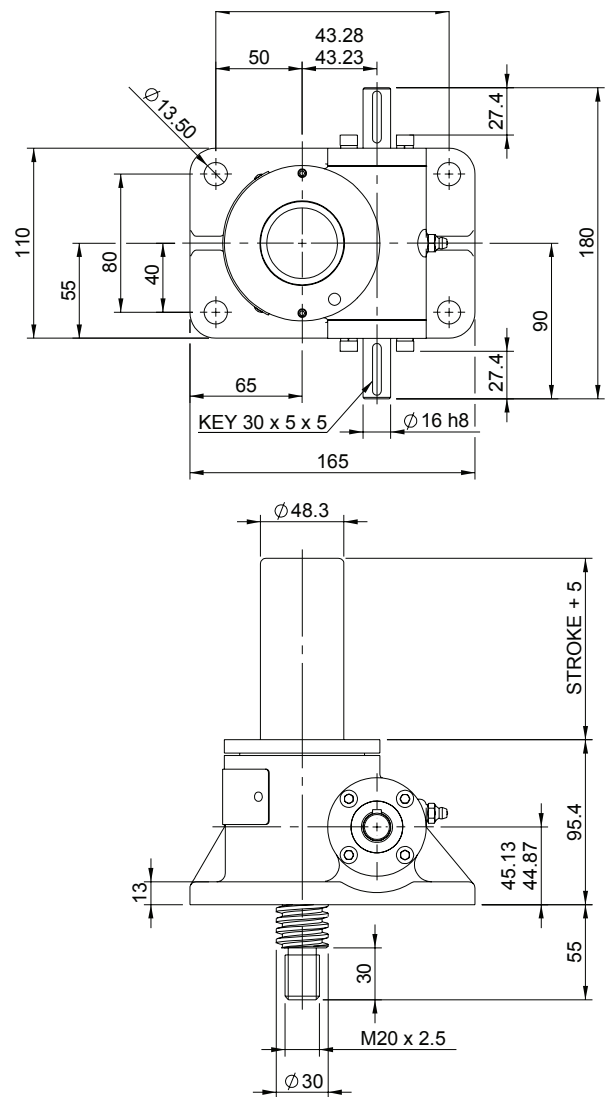


Upright EMT0025-U00



Inverted EMT0025-I00



EMT0025-U00

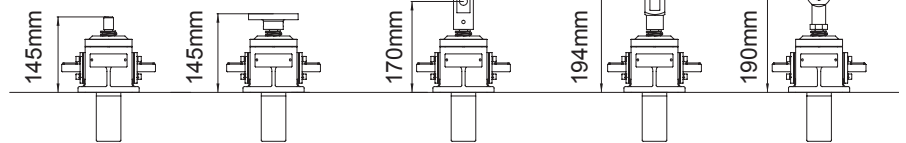
Closed Height



Translating Screw

Threaded End    Top Plate    Clevis End    Fork End    Rod End

Upright

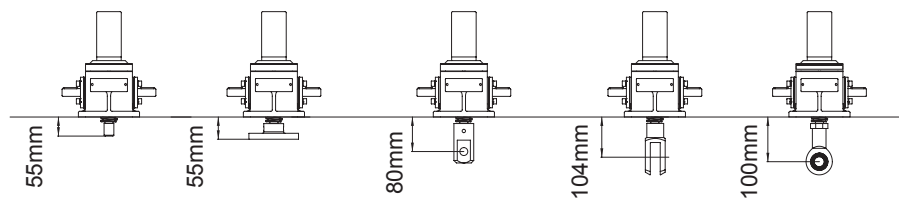


EMR0025-U00



Rotating Screw

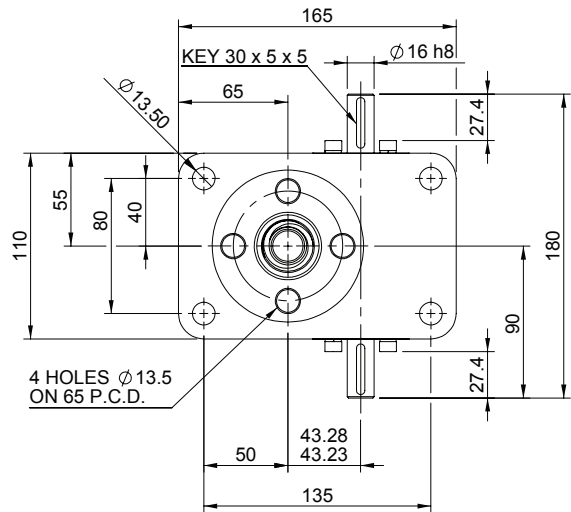
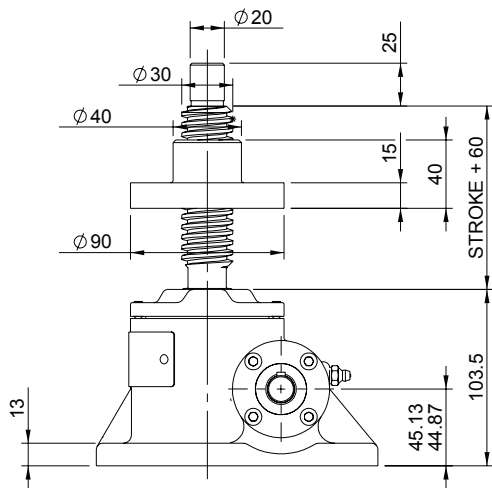
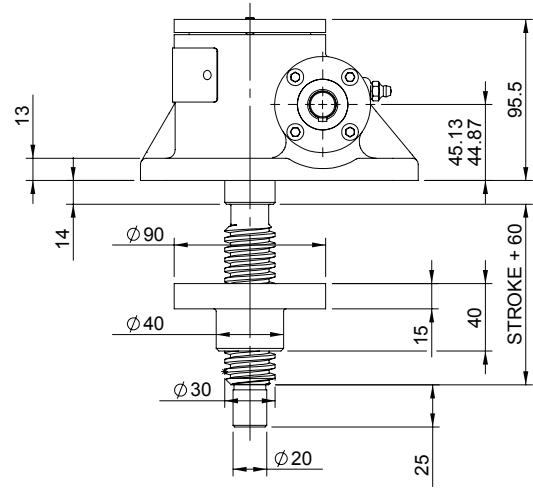
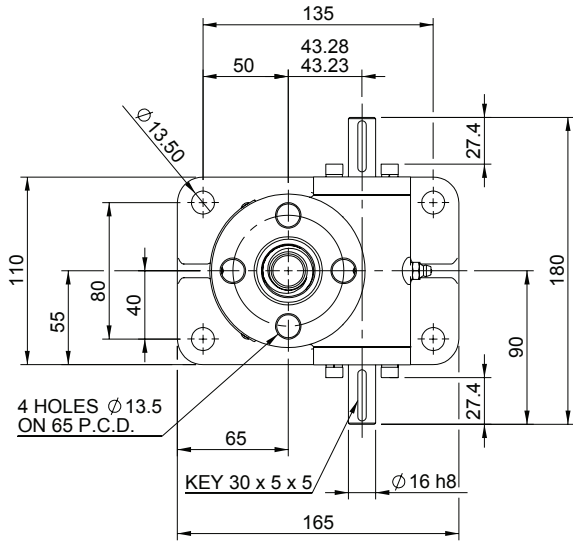
Inverted



Threaded End    Top Plate    Clevis End    Fork End    Rod End

Upright EMR0025-U00

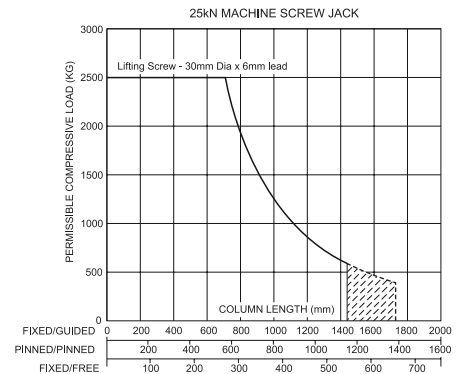
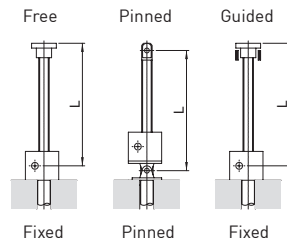
Inverted EMR0025-I00



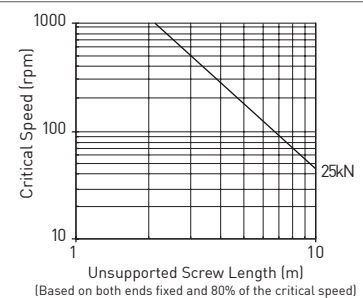
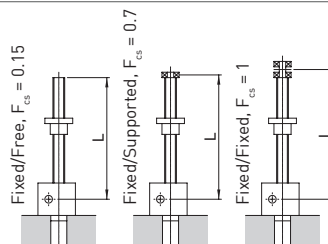
Performance

Column Strength

Model		EMT0025 EMR0025	
Capacity	kN	25	
Lifting Screw	Diameter (mm)	30	
	Lead	Option 1 mm	Option 2 mm
		6	12
Gear Ratio Option 1	Gear Ratio	6:1	
	Screw Jack Static Efficiency	0.201	0.302
	Screw Jack Static Dynamic	0.264	0.383
Gear Ratio Option 2	Gear Ratio	24:1	
	Screw Jack Static Efficiency	0.115	0.171
	Screw Jack Static Dynamic	0.167	0.242
Max. Input power (kW)	Gear Ratio Option 1	1.5	
	Gear Ratio Option 2	0.375	
Start up torque at full load (Nm)	Gear Ratio Option 1	19.8	26.3
	Gear Ratio Option 2	8.7	11.6



Critical Screw Speed



Note: All dimension in millimetres unless otherwise stated. Designs subject to change without notice