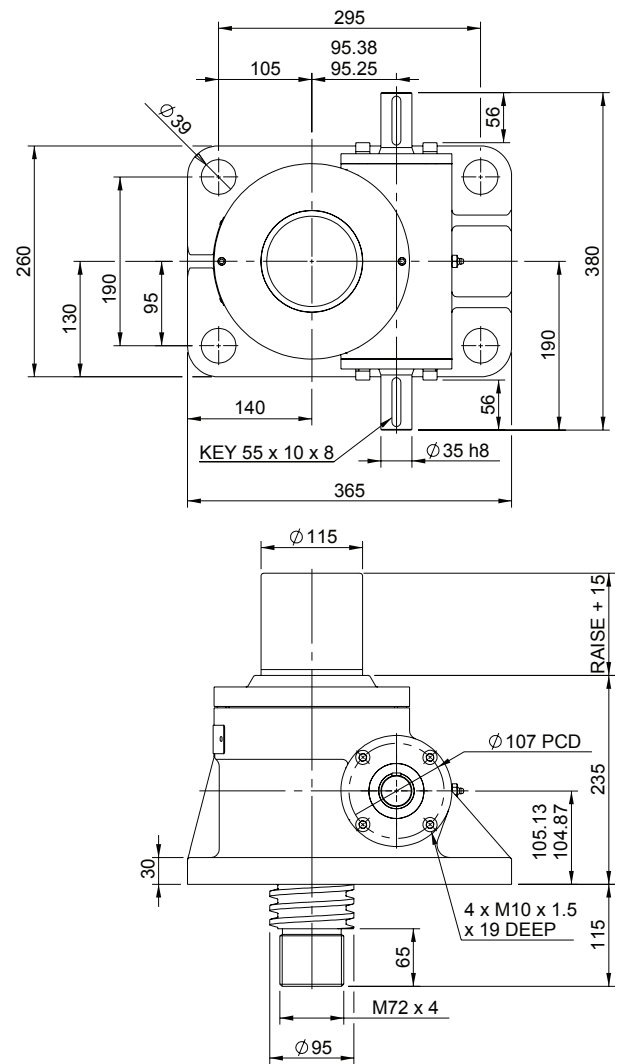
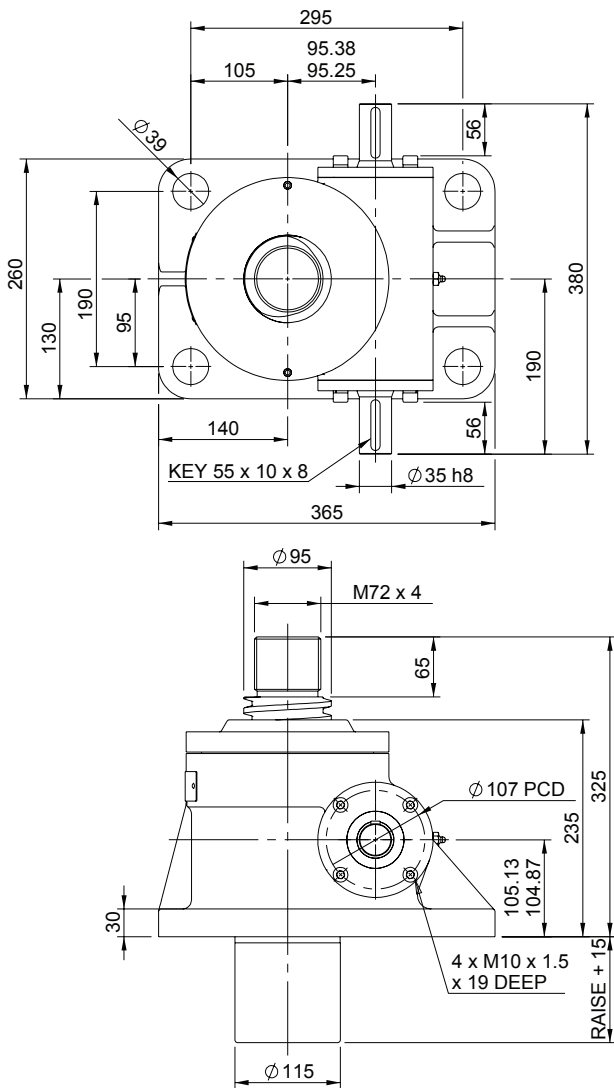


Upright EMT0300-U00

Inverted EMT0300-I00



EMT0300-U00

Closed Height

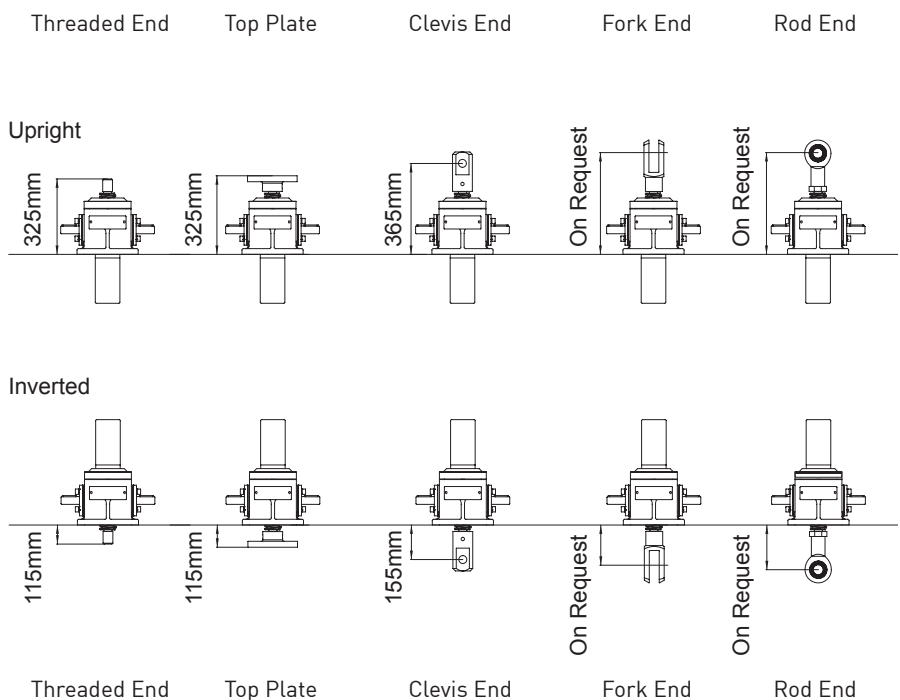


Translating Screw

EMR0300-U00

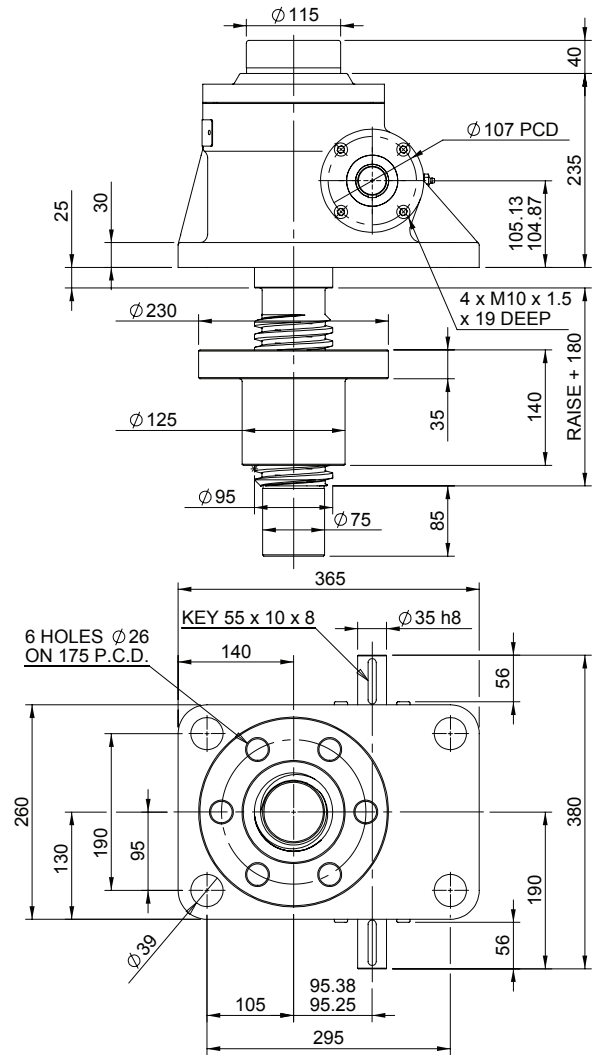
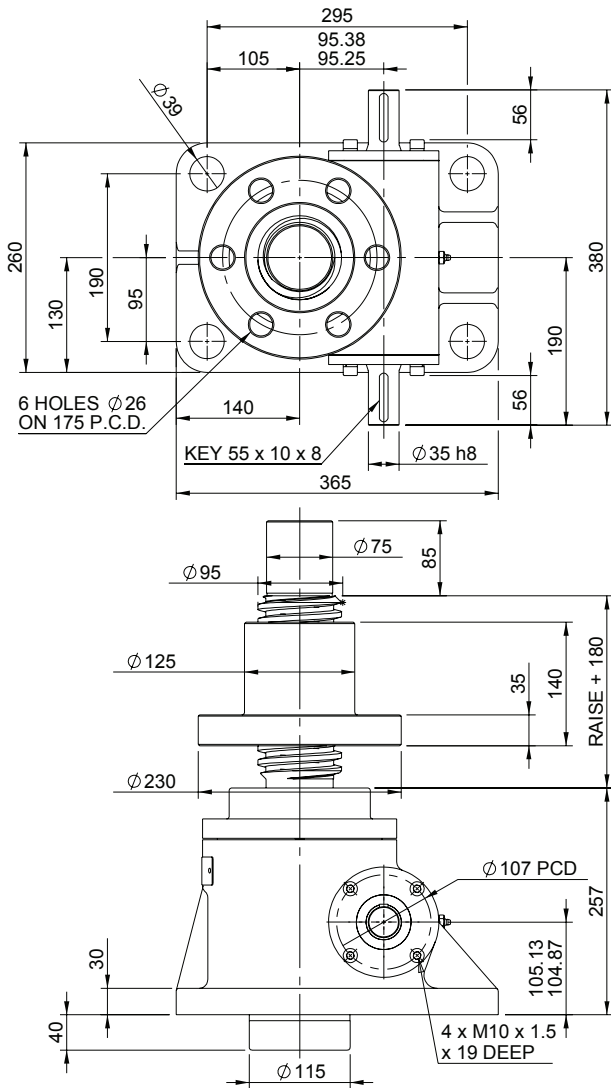


Rotating Screw



Upright EMR0300-U00

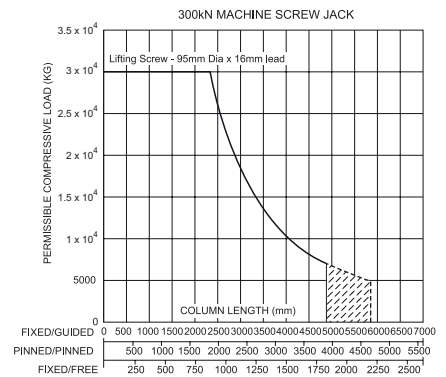
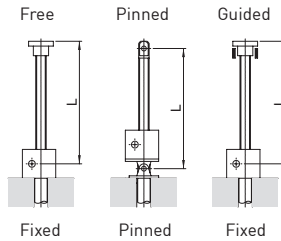
Inverted EMR0300-I00



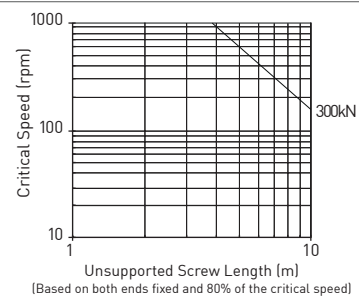
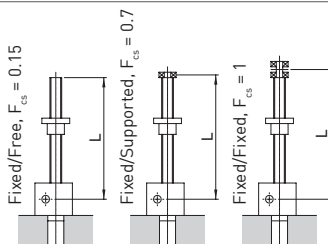
Performance

Column Strength

Model		EMT0300 EMR0300	
Capacity	kN	300	
Lifting Screw	Diameter (mm)	95	
	Lead	Option 1	Option 2
	mm	16	32
Gear Ratio Option 1	Gear Ratio	10 2/3:1	
	Screw Jack Static Efficiency	0.149	0.232
	Screw Jack Static Dynamic	0.205	0.308
Gear Ratio Option 2	Gear Ratio	32:1	
	Screw Jack Static Efficiency	0.084	0.131
	Screw Jack Static Dynamic	0.128	0.192
Max. Input power (kW)	Gear Ratio Option 1	6.0	
	Gear Ratio Option 2	1.9	
Start up torque at full load (Nm)	Gear Ratio Option 1	480	618
	Gear Ratio Option 2	284	365



Critical Screw Speed



Note: All dimension in millimetres unless otherwise stated. Designs subject to change without notice