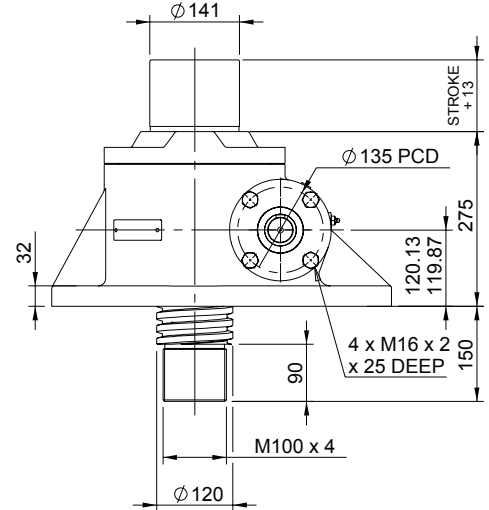
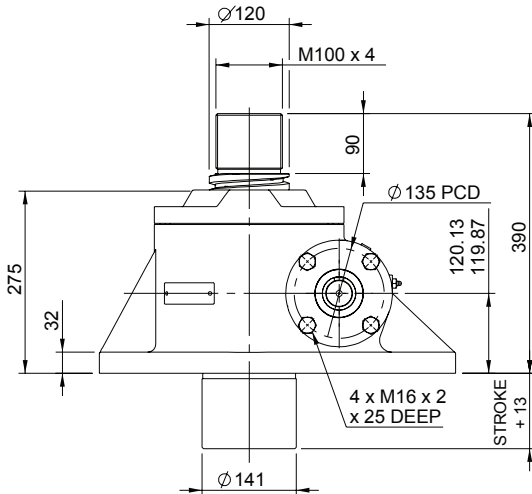
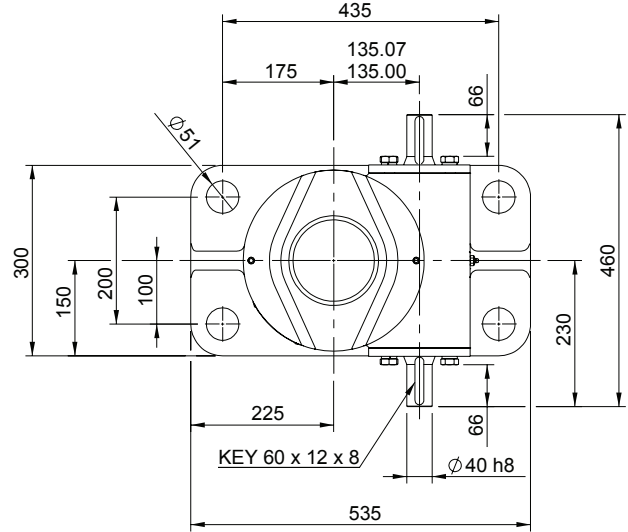
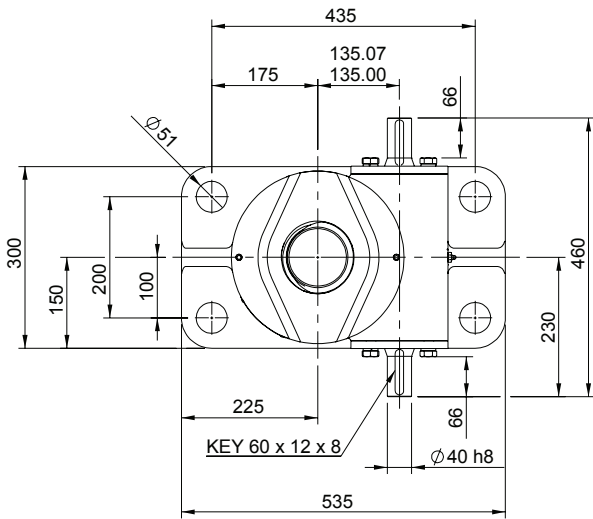


Upright EMT0500-U00

Inverted EMT0500-I00



EMT0500-U00

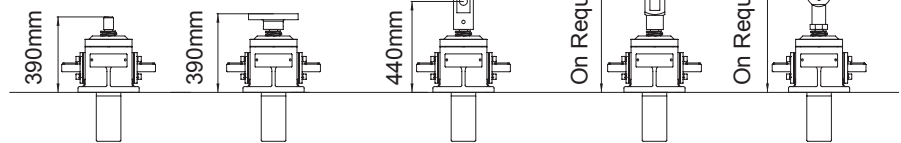
Closed Height



Translating Screw

Threaded End Top Plate Clevis End Fork End Rod End

Upright

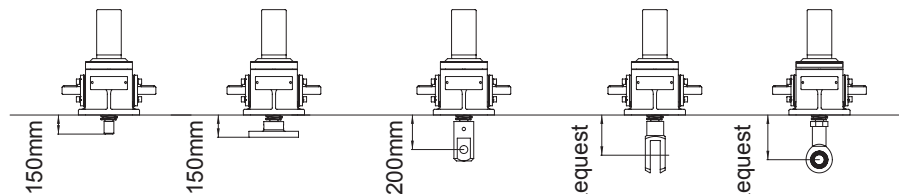


EMR0500-U00



Rotating Screw

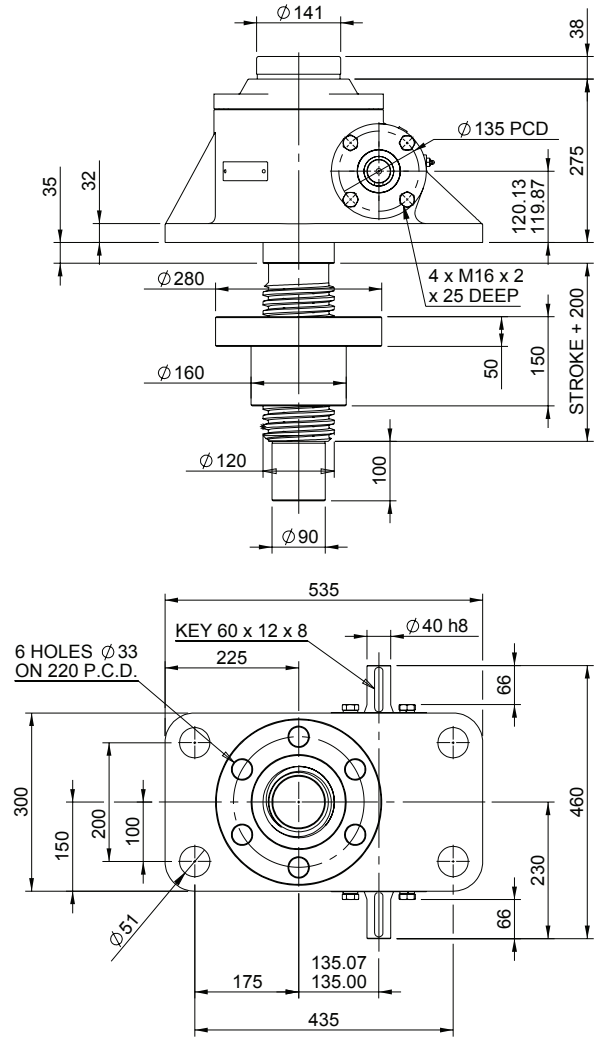
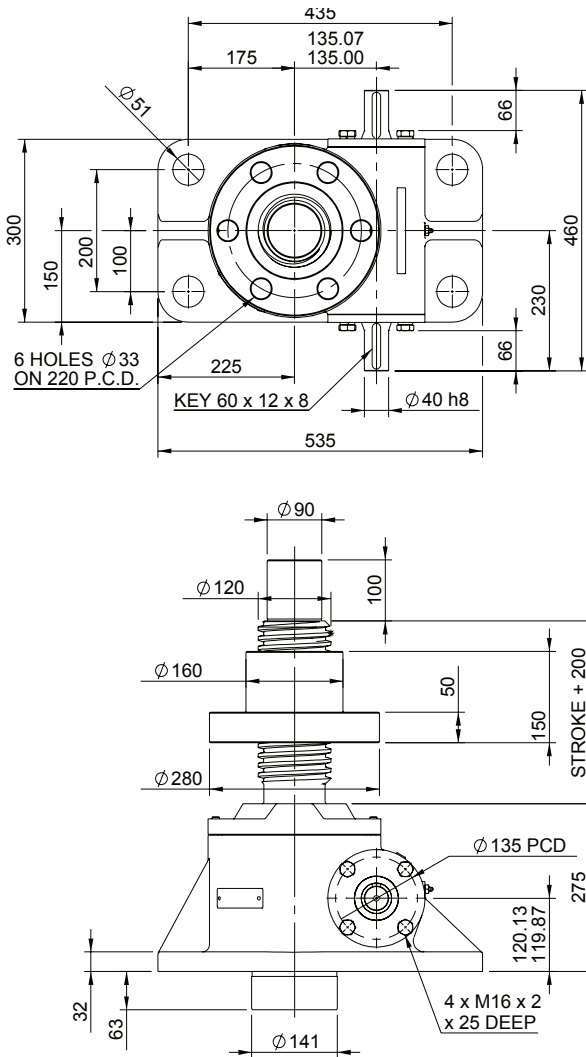
Inverted



Threaded End Top Plate Clevis End Fork End Rod End

Upright EMR0500-U00

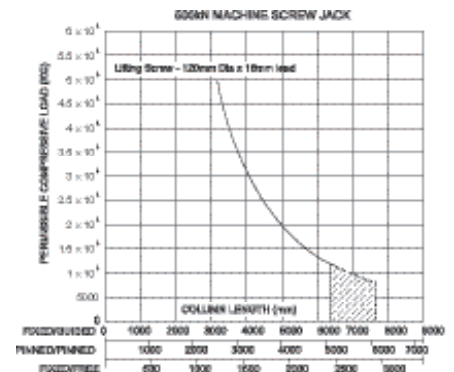
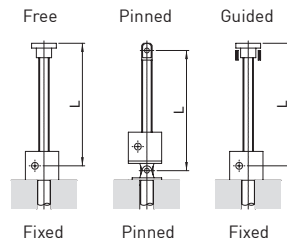
Inverted EMR0500-I00



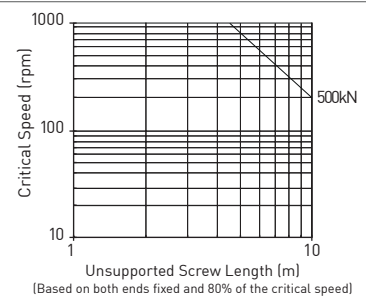
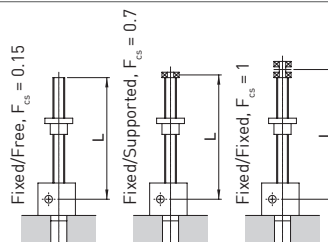
Performance

Column Strength

Model		EMT0500 EMR0500	
Capacity	kN	500	
Lifting Screw	Diameter (mm)	120	
	Lead	Option 1 mm	Option 2 mm
Gear Ratio Option 1	Gear Ratio	10 2/3:1	
	Screw Jack Static Efficiency	0.132	0.215
	Screw Jack Static Dynamic	0.181	0.284
Gear Ratio Option 2	Gear Ratio	32:1	
	Screw Jack Static Efficiency	0.079	0.129
	Screw Jack Static Dynamic	0.120	0.188
Max. Input power (kW)	Gear Ratio Option 1	11.25	
	Gear Ratio Option 2	4.5	
Start up torque at full load (Nm)	Gear Ratio Option 1	904	1113
	Gear Ratio Option 2	504	618



Critical Screw Speed



Note: All dimension in millimetres unless otherwise stated. Designs subject to change without notice