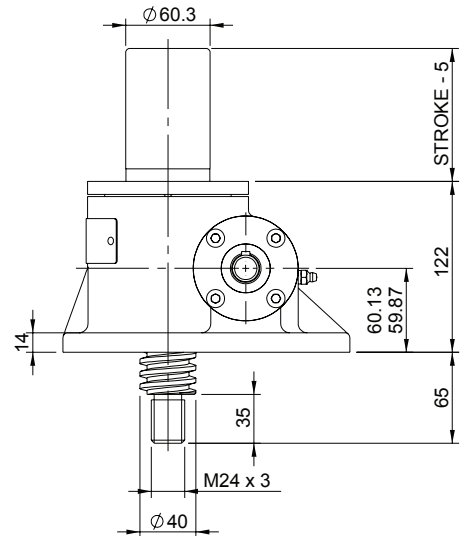
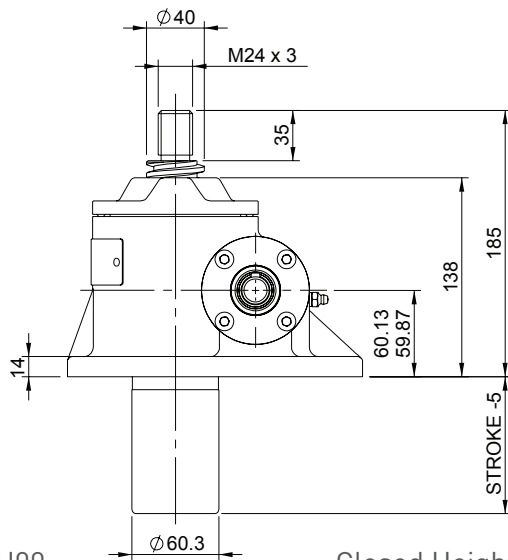
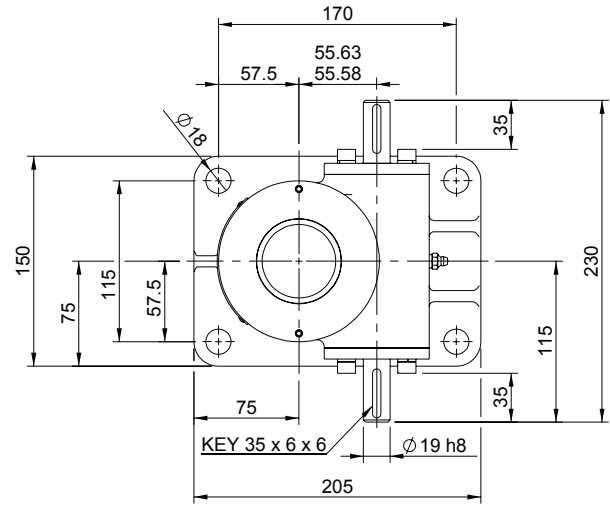
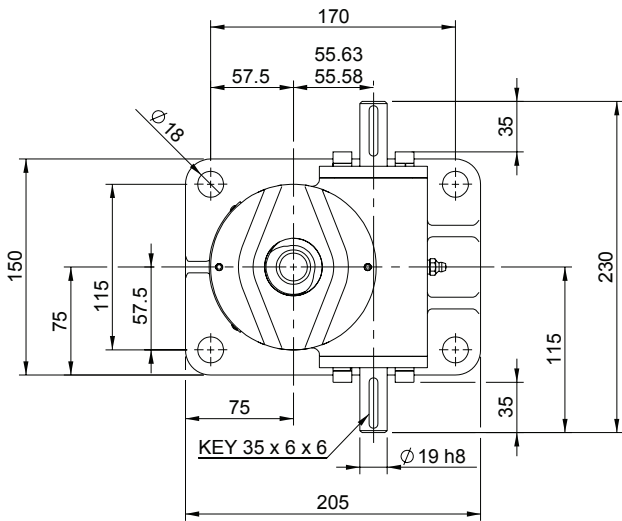


Upright EMT0050-U00

Inverted EMT0050-I00



EMT0050-U00

Closed Height



Translating Screw

EMR0050-U00



Rotating Screw

Threaded End

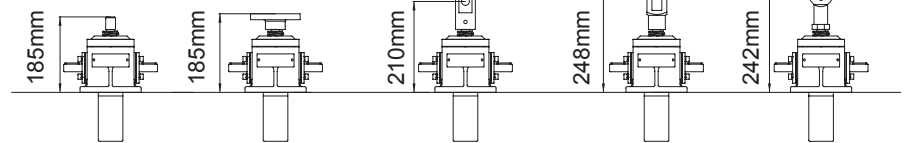
Top Plate

Clevis End

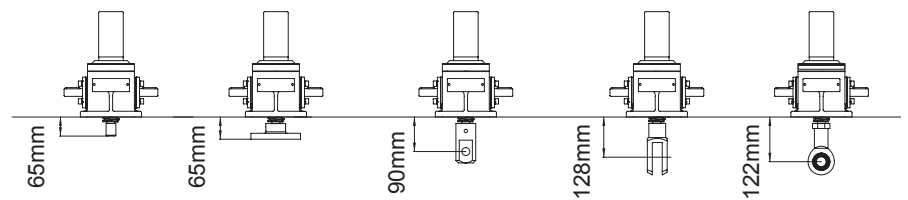
Fork End

Rod End

Upright



Inverted



Threaded End

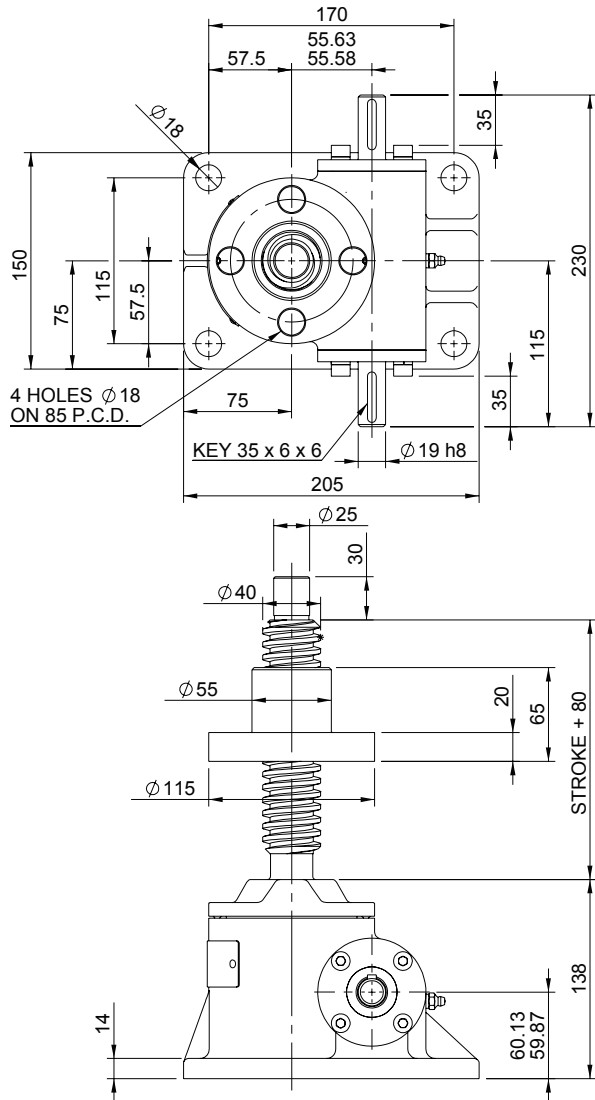
Top Plate

Clevis End

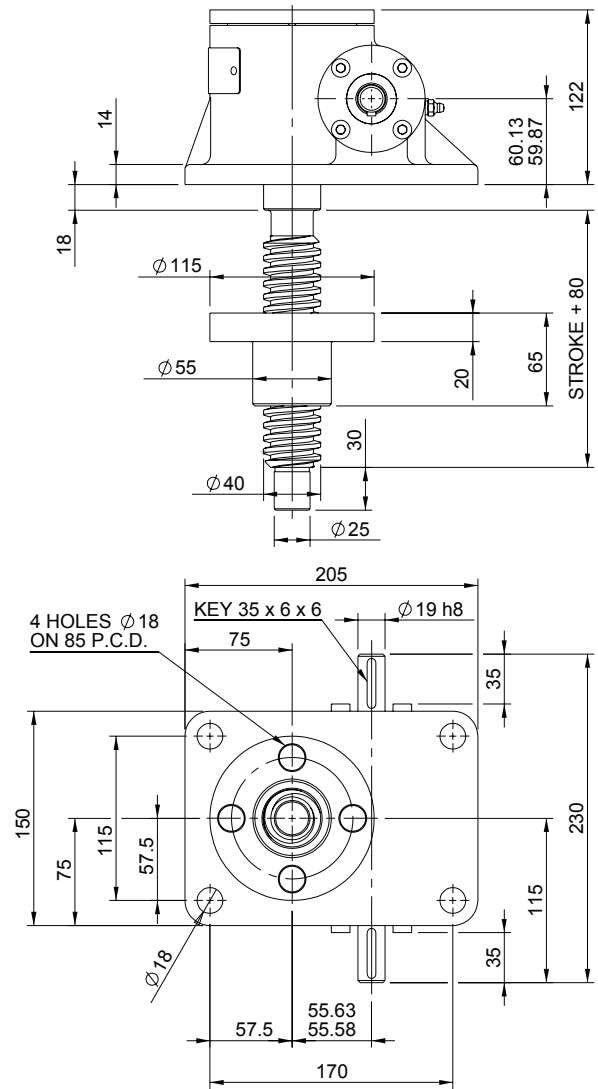
Fork End

Rod End

Upright EMR0050-U00



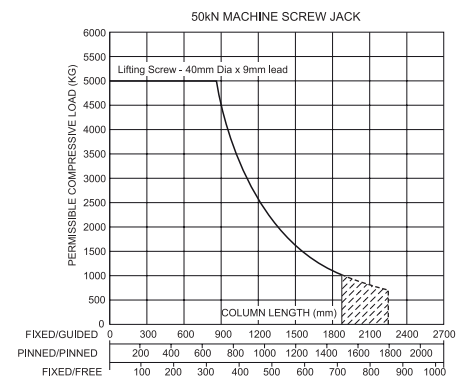
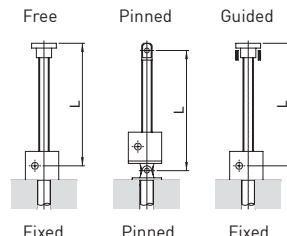
Inverted EMR0050-I00



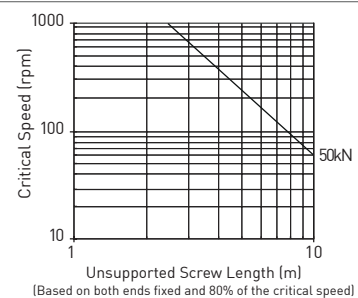
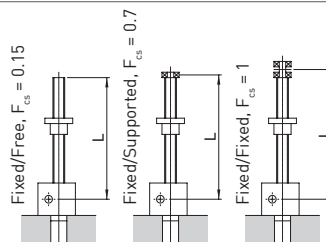
Performance

Column Strength

Model		EMT0050 EMR0050	
Capacity	kN	50	
Lifting Screw	Diameter (mm)	40	
	Lead	Option 1 mm	Option 2 mm
Gear Ratio Option 1	Gear Ratio	6:1	
	Screw Jack Static Efficiency	0.213	0.314
	Screw Jack Static Dynamic	0.281	0.398
Gear Ratio Option 2	Gear Ratio	24:1	
	Screw Jack Static Efficiency	0.117	0.172
	Screw Jack Static Dynamic	0.172	0.244
Max. Input power (kW)	Gear Ratio Option 1	3.0	
	Gear Ratio Option 2	0.55	
Start up torque at full load (Nm)	Gear Ratio Option 1	56	76
	Gear Ratio Option 2	25.5	34.7



Critical Screw Speed



Note: All dimension in millimetres unless otherwise stated. Designs subject to change without notice