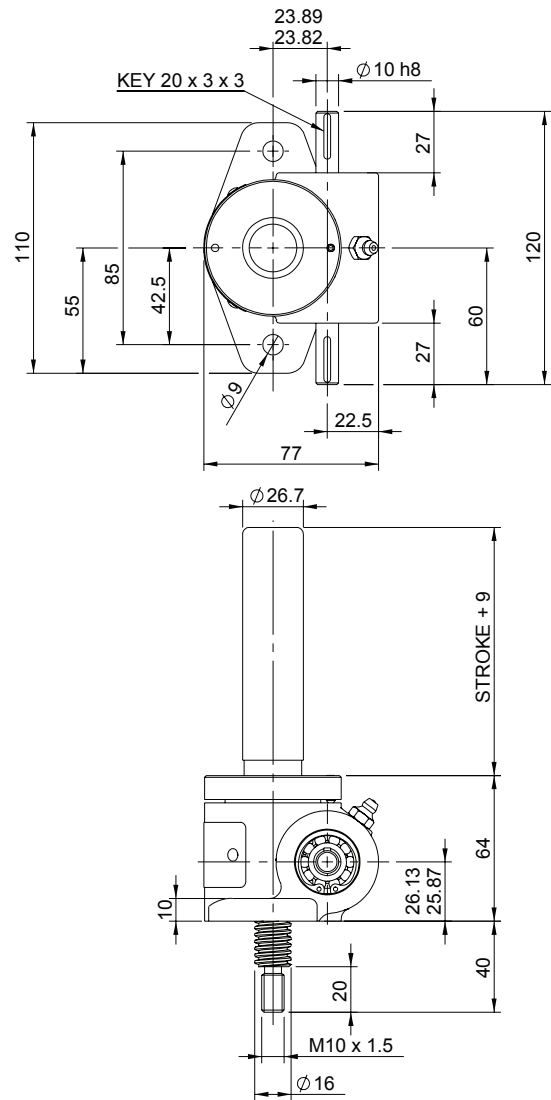
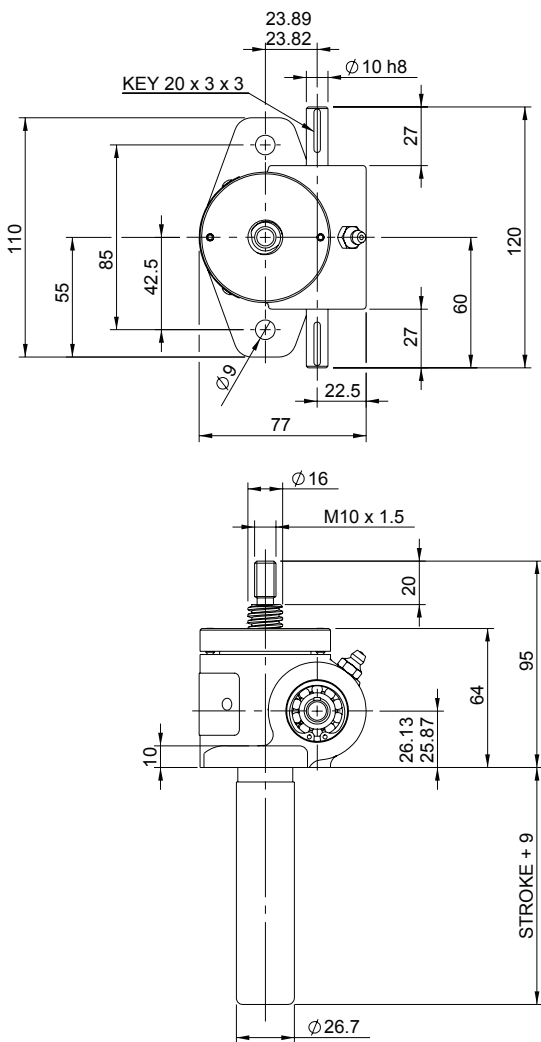


Upright EMT0005-U00

Inverted EMT0005-I00



EMT0005-U00

Closed Height



Translating Screw

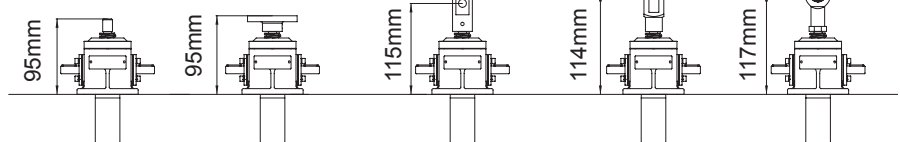
EMR0005-U00



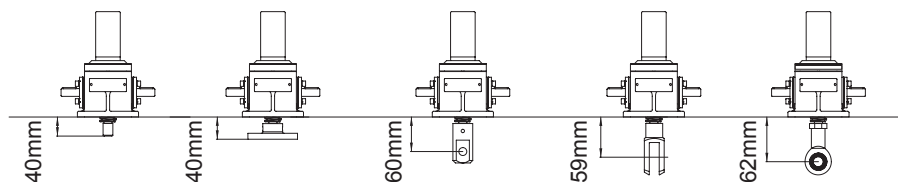
Rotating Screw

Threaded End Top Plate Clevis End Fork End Rod End

Upright



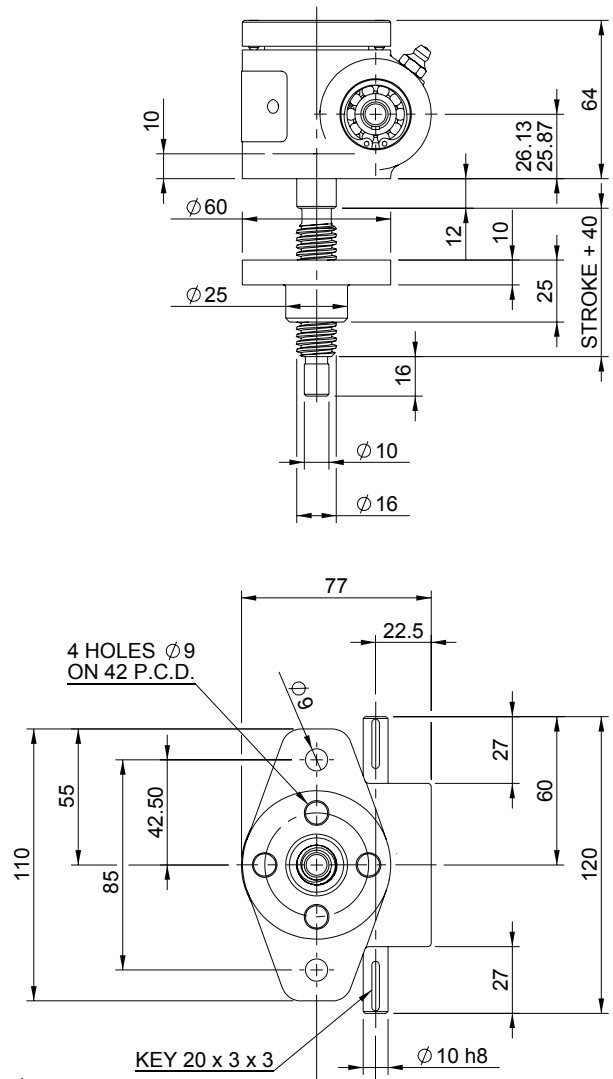
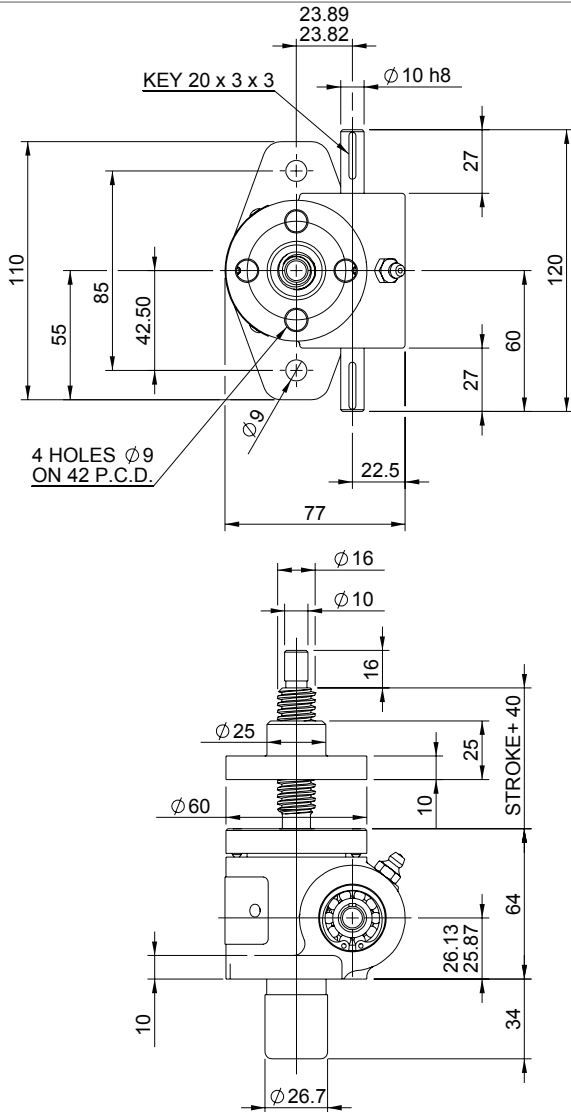
Inverted



Threaded End Top Plate Clevis End Fork End Rod End

Upright EMR0005-U00

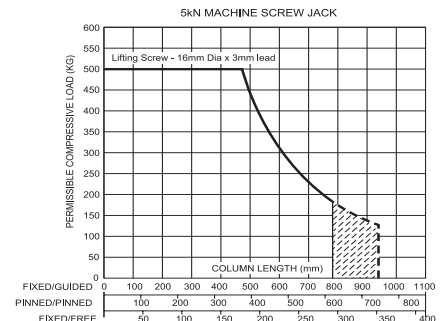
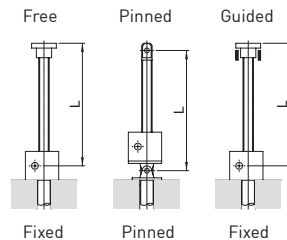
Inverted EMR0005-I00



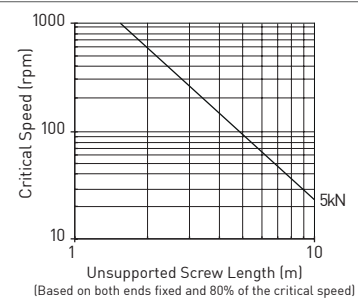
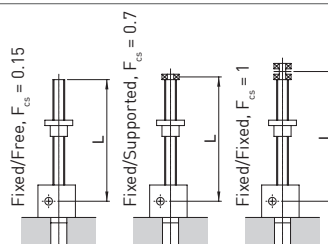
Performance

Column Strength

Model		EMT0005 EMR0005	
Capacity	kN	5	
Lifting Screw	Diameter (mm)	16	
	Lead	Option 1 mm	Option 2 mm
Gear Ratio Option 1	Gear Ratio	5:1	
	Screw Jack Static Efficiency	0.189	0.291
	Screw Jack Static Dynamic	0.252	0.370
Gear Ratio Option 2	Gear Ratio	20:1	
	Screw Jack Static Efficiency	0.107	0.165
	Screw Jack Static Dynamic	0.160	0.235
Max. Input power (kW)	Gear Ratio Option 1	0.25	
	Gear Ratio Option 2	0.12	
Start up torque at full load (Nm)	Gear Ratio Option 1	2.5	3.3
	Gear Ratio Option 2	1.1	1.4



Critical Screw Speed



Note: All dimension in millimetres unless otherwise stated. Designs subject to change without notice