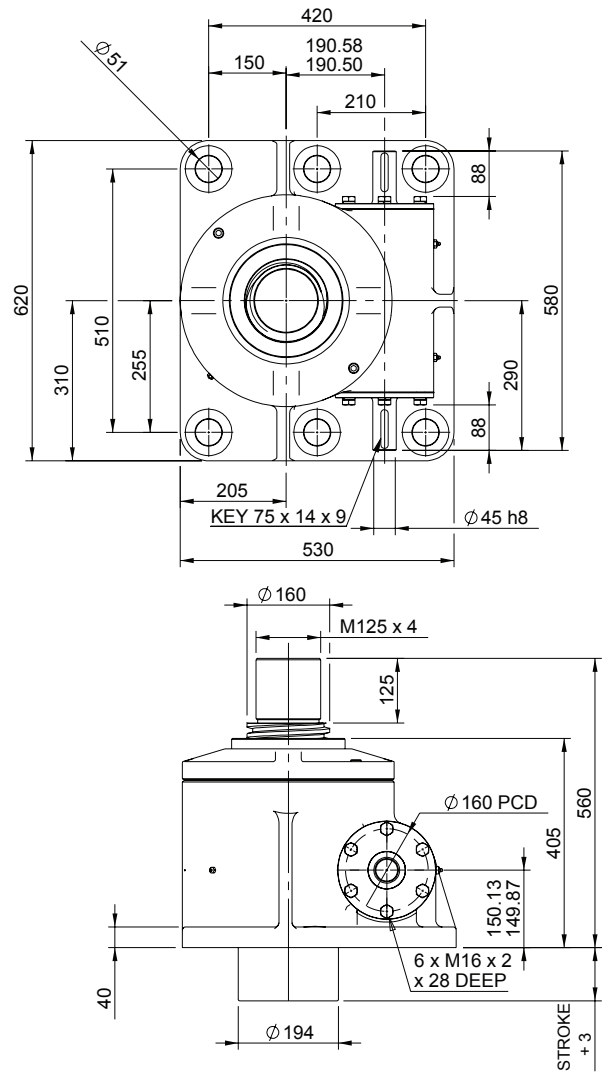
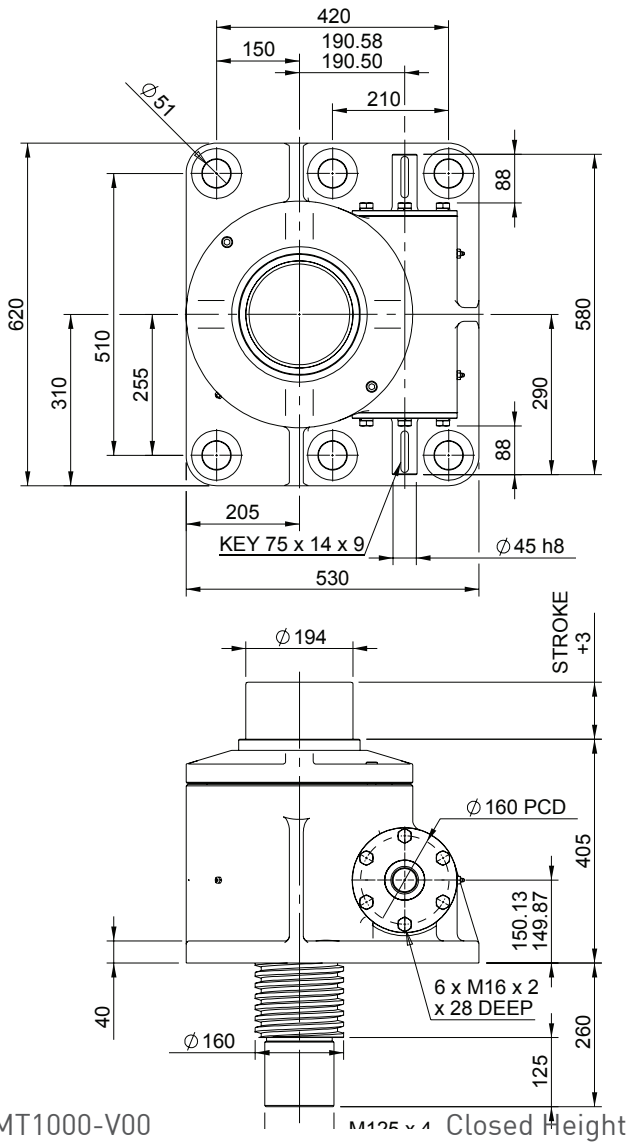


Upright EMT1000-V00

Inverted EMT1000-J00



EMT1000-V00

M125 x 4 Closed Height

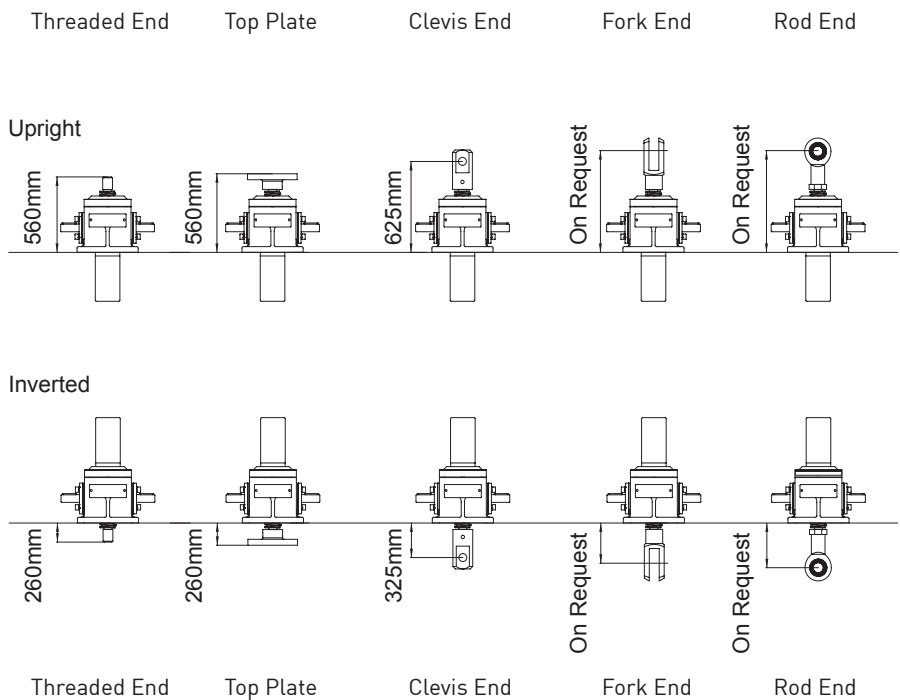


Translating Screw

EMR1000-V00



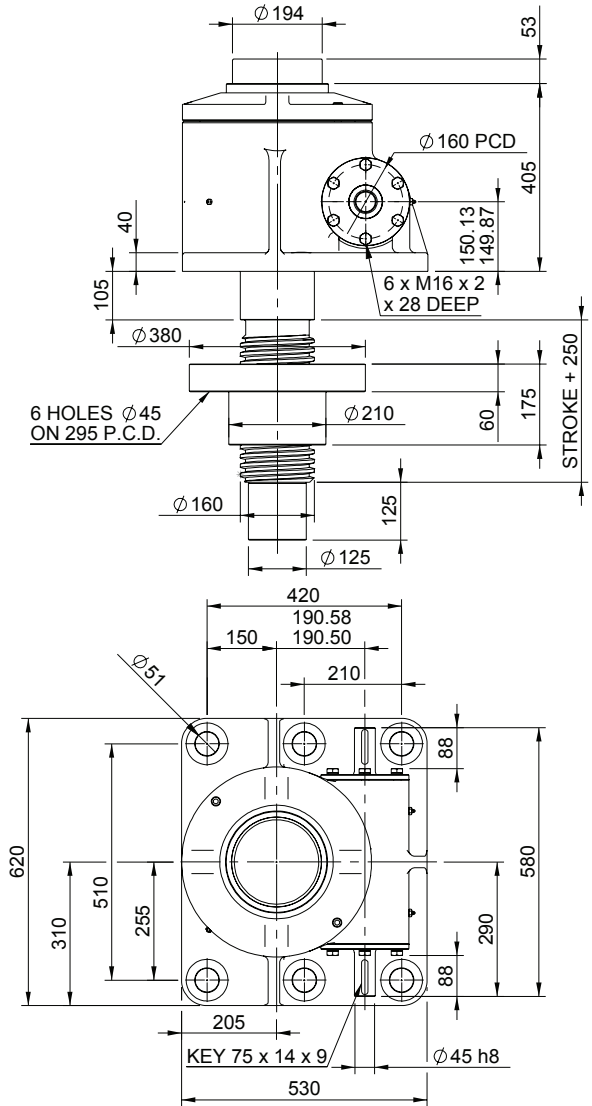
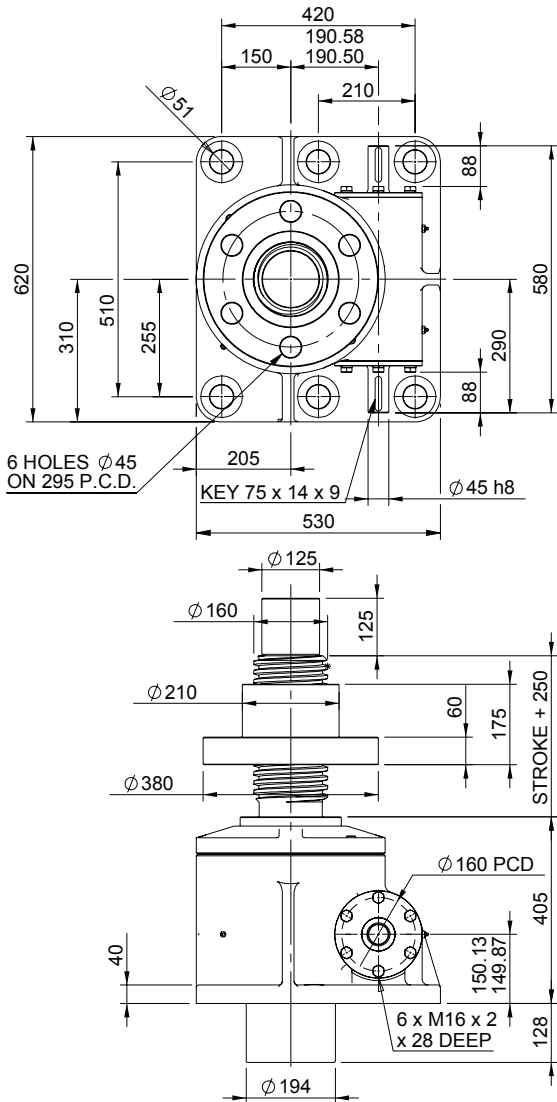
Rotating Screw



Note: All dimension in millimetres unless otherwise stated. Designs subject to change without notice

Upright EMR1000-V00

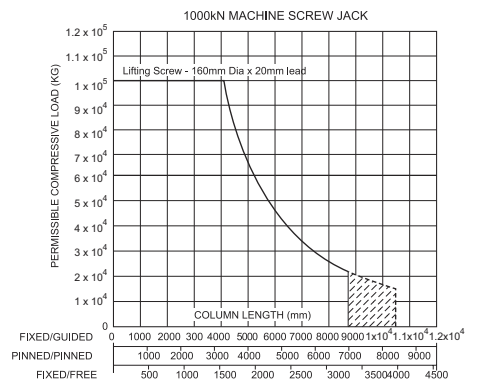
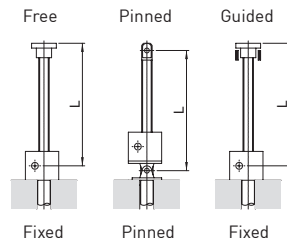
Inverted EMR1000-J00



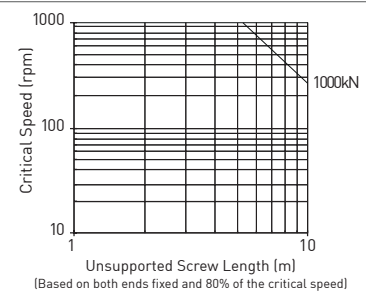
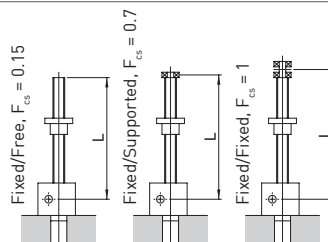
Performance

Column Strength

Model		EMT1000 EMR1000
Capacity (kN)		1000
Sustaining Capacity (kN)	Standard 316 Lifting Screw	Tension: 666 Compression: 1000
	Duplex Lifting Screw	1000
Operating Capacity (kN)	Standard 316 Worm Shaft	333
	Duplex or Plated Worm Shaft with 316 Screw	Tension: 666 Compression: 1000
		Duplex or Plated Worm Shaft with Duplex Screw
Lifting Screw	Diameter (mm)	160
	Lead	Option: 1 mm: 20
Gear Ratio Option 1		Gear Ratio
	Screw Jack Static Efficiency	0.131
	Screw Jack Dynamic Efficiency	0.178
Gear Ratio Option 2	Gear Ratio	36:1
	Screw Jack Static Efficiency	0.079
	Screw Jack Dynamic Efficiency	0.123



Critical Screw Speed



Note: All dimension in millimetres unless otherwise stated. Designs subject to change without notice