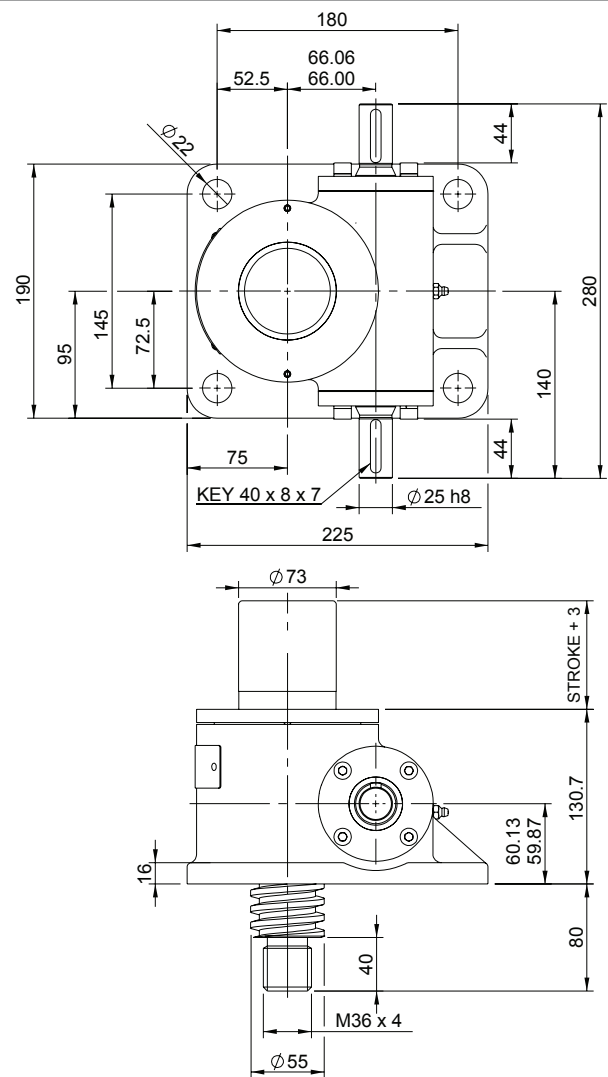
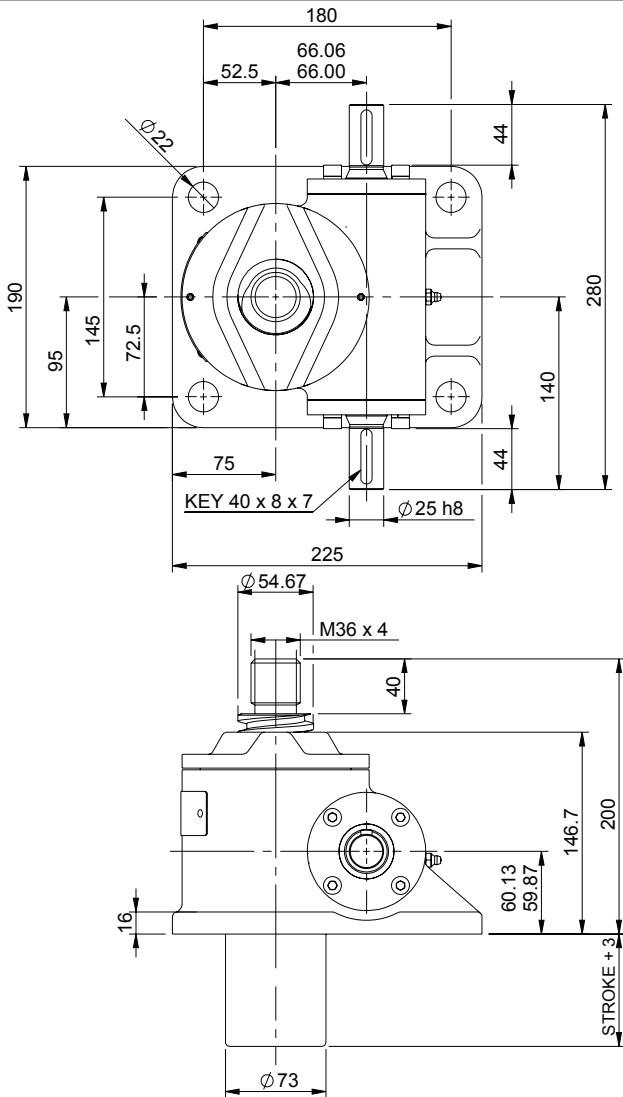


Upright EMT0100-V00

Inverted EMT0100-J00



EMT0100-V00

Closed Height



Translating Screw

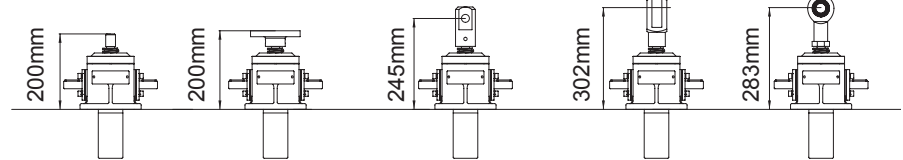
EMR0100-V00



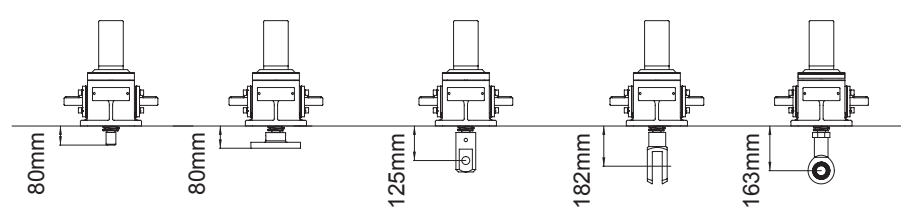
Rotating Screw

Threaded End Top Plate Clevis End Fork End Rod End

Upright



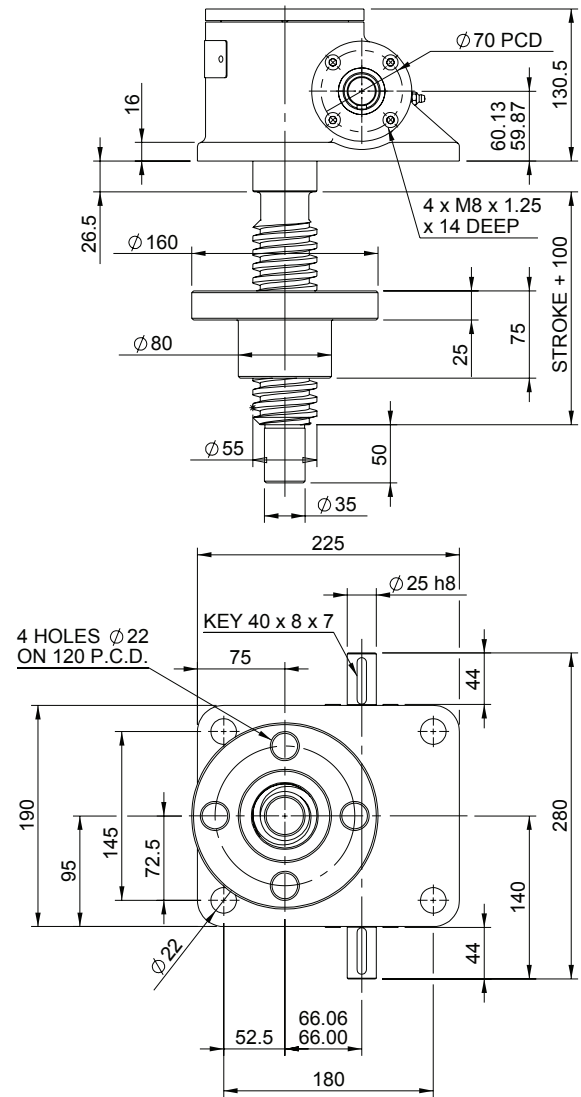
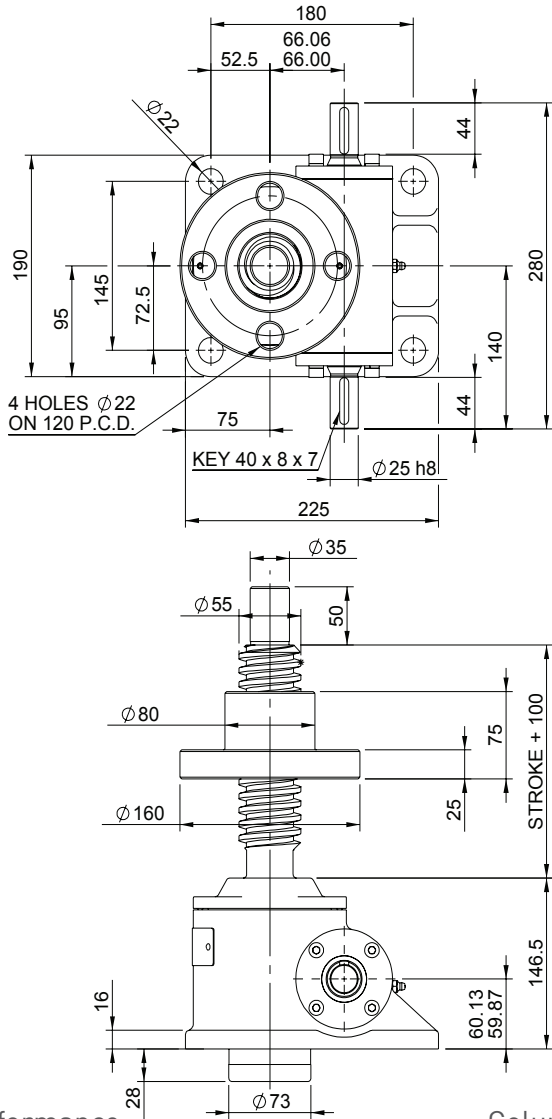
Inverted



Threaded End Top Plate Clevis End Fork End Rod End

Upright EMR0100-V00

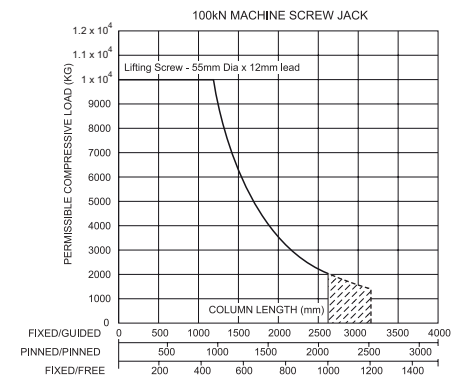
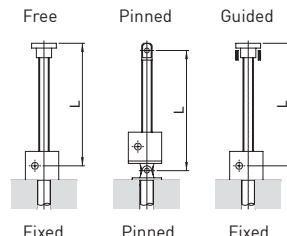
Inverted EMR0100-J00



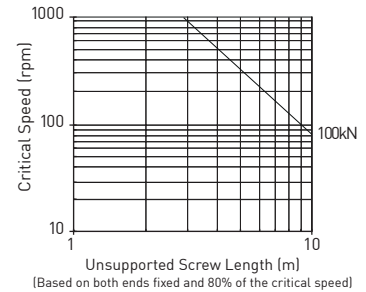
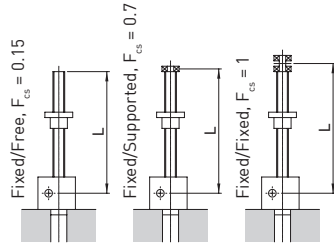
Performance

Column Strength

Model		EMT0100 EMR0100	
Capacity (kN)		100	
Sustaining Capacity (kN)	Standard 316 Lifting Screw	Tension	66
	Duplex Lifting Screw	Compression	100
Operating Capacity (kN)	Standard 316 Worm Shaft	33	
	Duplex or Plated Worm Shaft with 316 Screw	Tension	66
		Compression	100
	Duplex or Plated Worm Shaft with Duplex Screw	100	
Lifting Screw	Diameter (mm)	55	
	Lead	Option	1 2
		mm	12 24
Gear Ratio Option 1	Gear Ratio	8:1	
	Screw Jack Static Efficiency	0.206	0.305
	Screw Jack Dynamic Efficiency	0.272	0.388
	Gear Ratio Option 2	24:1	
Gear Ratio Option 2	Screw Jack Static Efficiency	0.132	0.195
	Screw Jack Dynamic Efficiency	0.190	0.271



Critical Screw Speed



Note: All dimension in millimetres unless otherwise stated. Designs subject to change without notice