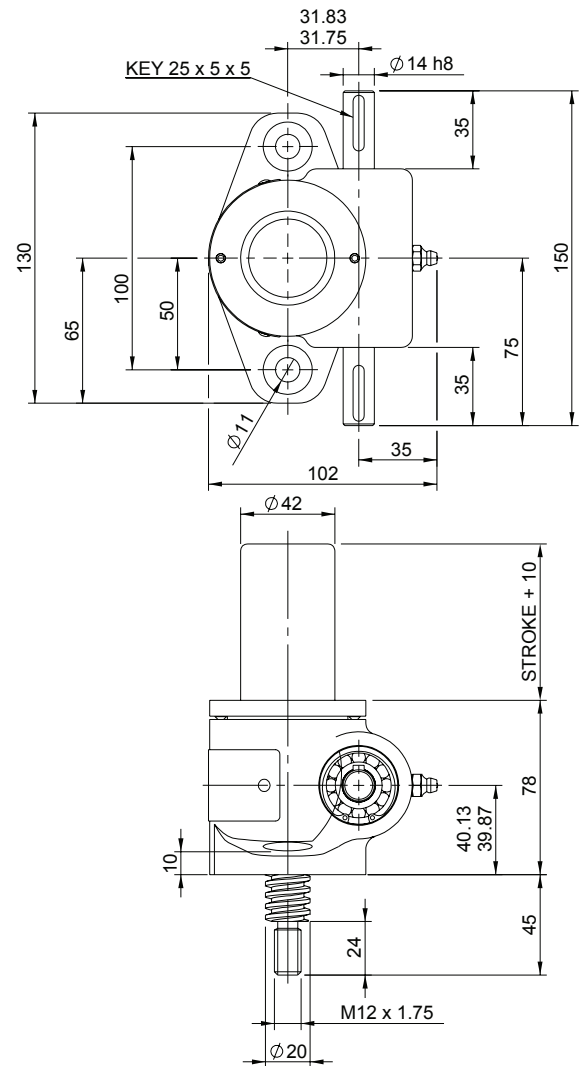
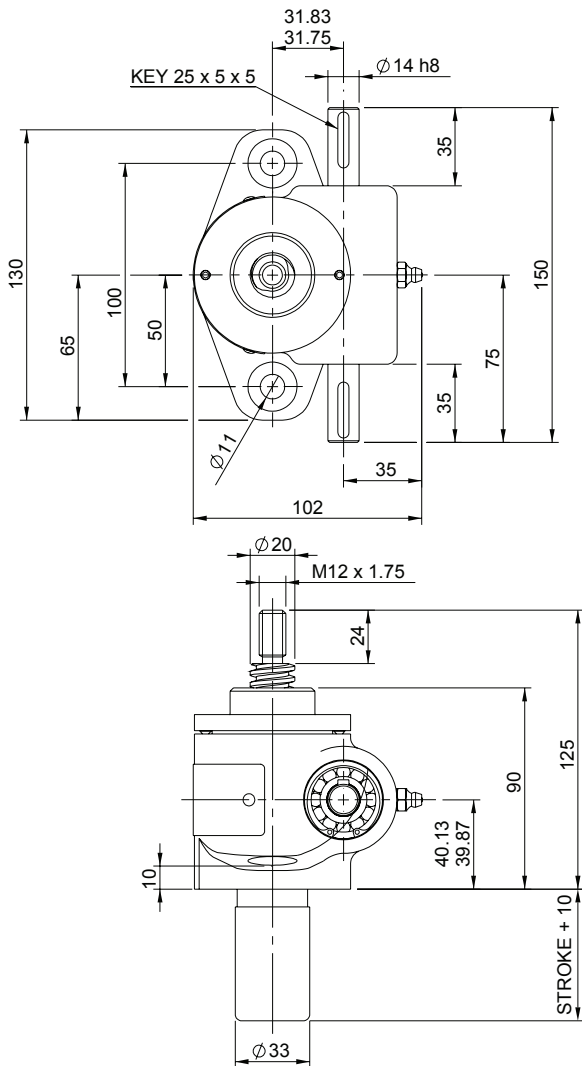


Upright EMT0010-V00

Inverted EMT0010-J00



EMT0010-V00

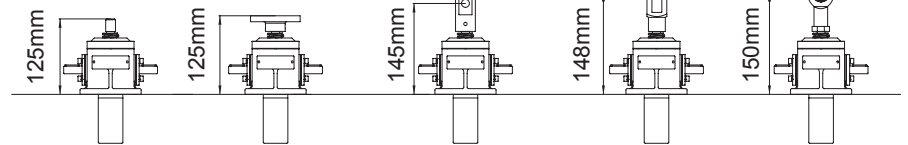
Closed Height



Translating Screw

Threaded End Top Plate Clevis End Fork End Rod End

Upright

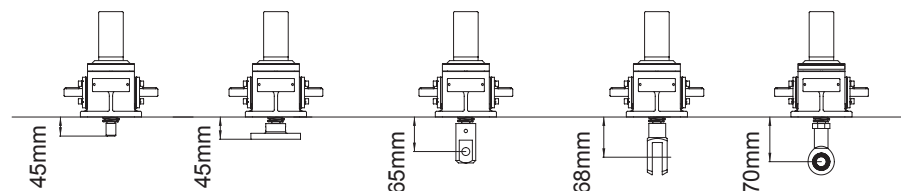


EMR0010-V00

Inverted



Rotating Screw

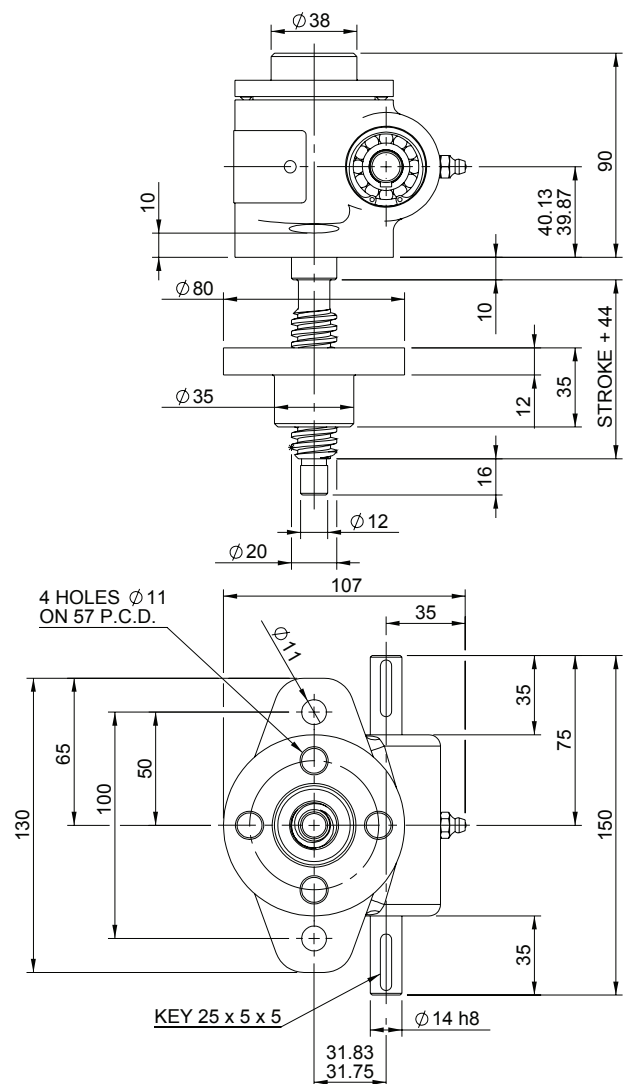
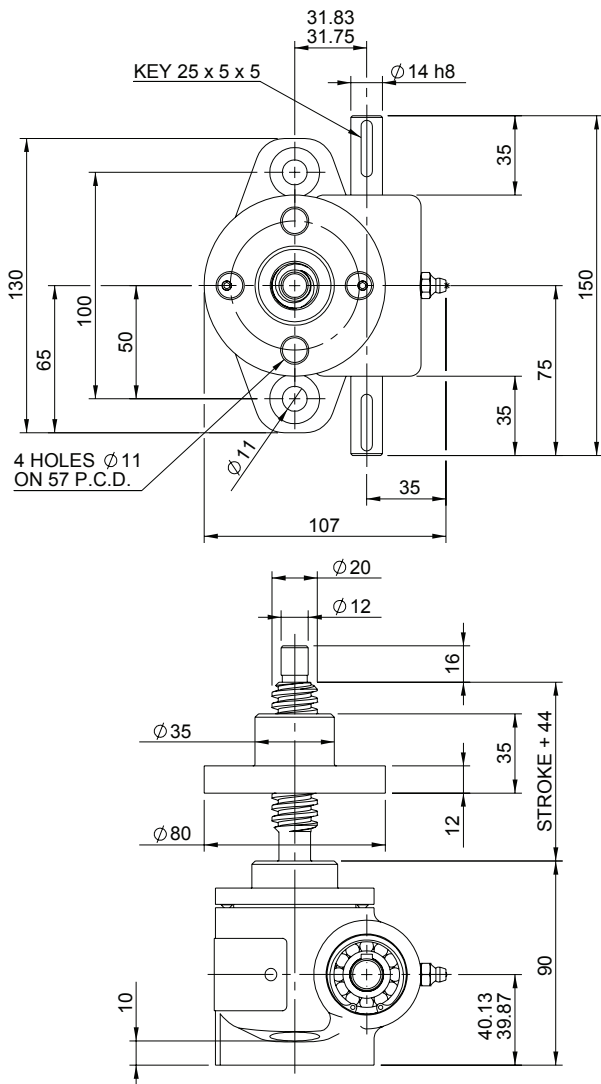


Threaded End Top Plate Clevis End Fork End Rod End

10kN Rotating

Upright EMR0010-V00

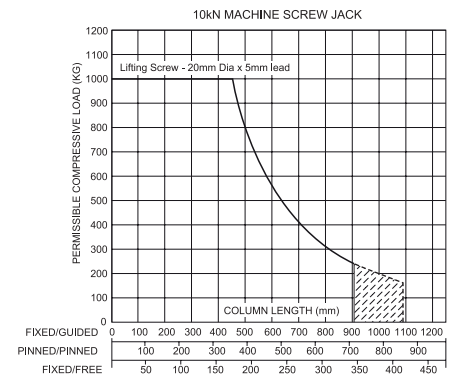
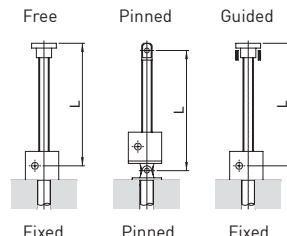
Inverted EMR0010-J00



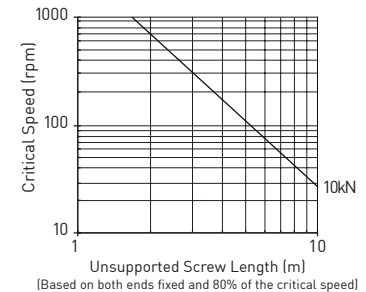
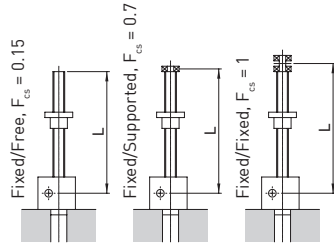
Performance

Column Strength

Model		EMT0010 EMR0010	
Capacity (kN)		10	
Sustaining Capacity (kN)	Standard 316 Lifting Screw	Tension	6.6
		Compression	10
Duplex Lifting Screw		10	
Operating Capacity (kN)	Standard 316 Worm Shaft		3.3
	Duplex or Plated Worm Shaft with 316 Screw	Tension	6.6
		Compression	10
	Duplex or Plated Worm Shaft with Duplex Screw		10
Lifting Screw	Diameter (mm)		20
	Lead	Option	1 2
		mm	5 10
Gear Ratio Option 1	Gear Ratio		5:1
	Screw Jack Static Efficiency		0.233 0.339
	Screw Jack Dynamic Efficiency		0.306 0.424
	Gear Ratio		20:1
Gear Ratio Option 2	Gear Ratio		20:1
	Screw Jack Static Efficiency		0.130 0.192
	Screw Jack Dynamic Efficiency		0.194 0.268
	Gear Ratio		20:1



Critical Screw Speed



Note: All dimension in millimetres unless otherwise stated. Designs subject to change without notice