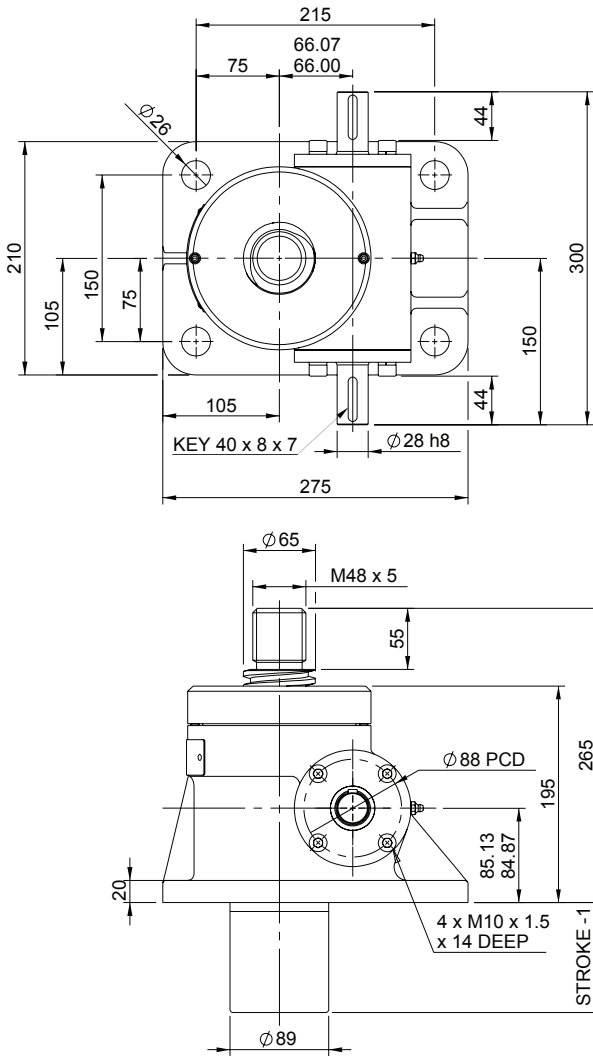
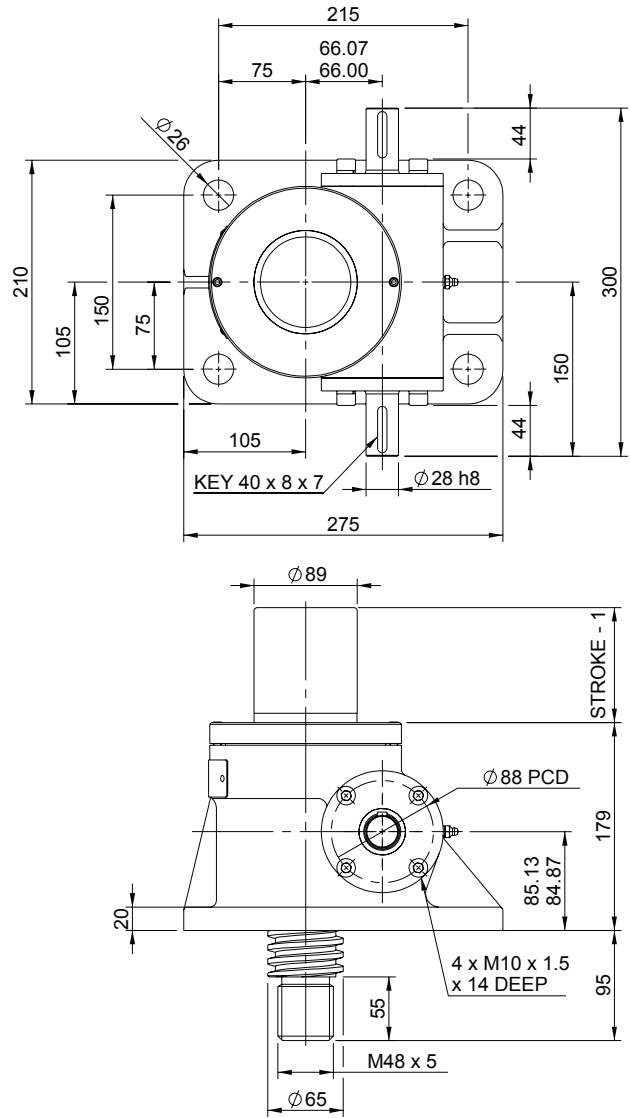


Upright EMT0200-V00



Inverted EMT0200-J00



EMT0200-V00

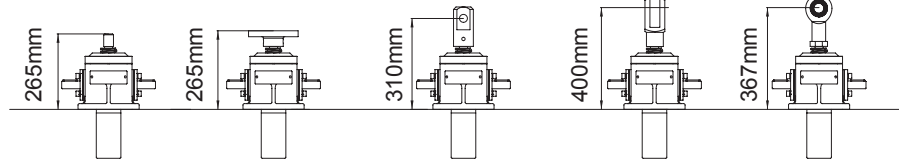
Closed Height



Translating Screw

Threaded End Top Plate Clevis End Fork End Rod End

Upright

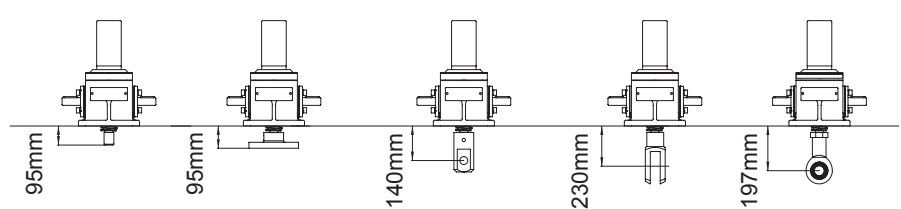


EMR0200-V00



Rotating Screw

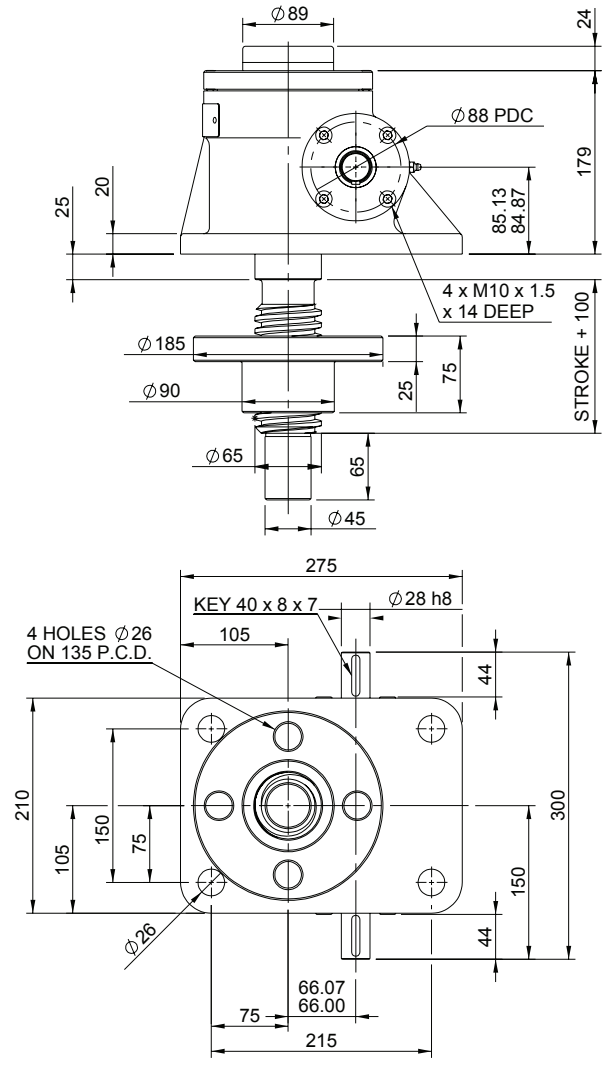
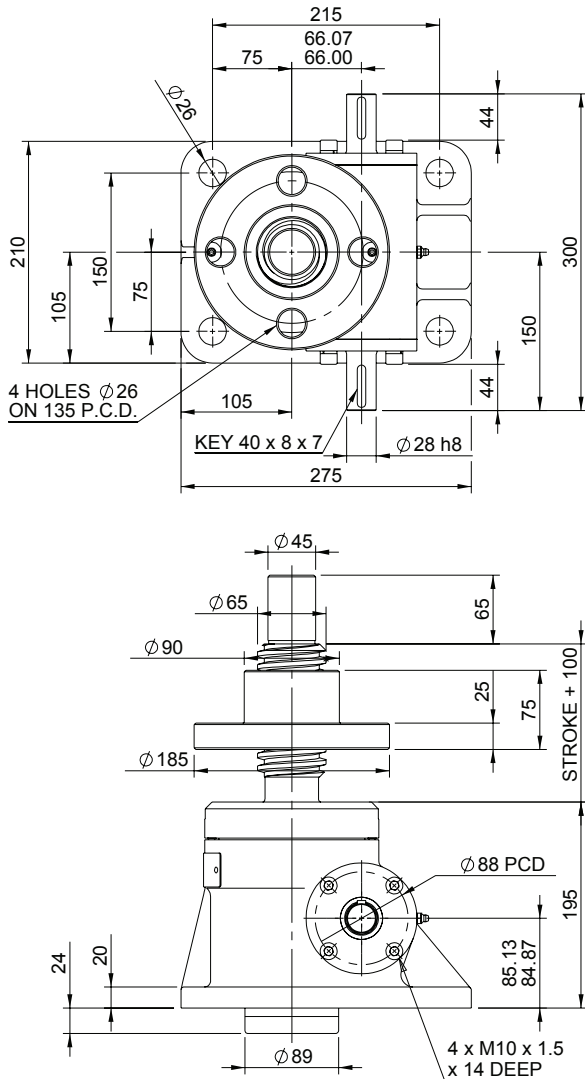
Inverted



Threaded End Top Plate Clevis End Fork End Rod End

Upright EMR0200-V00

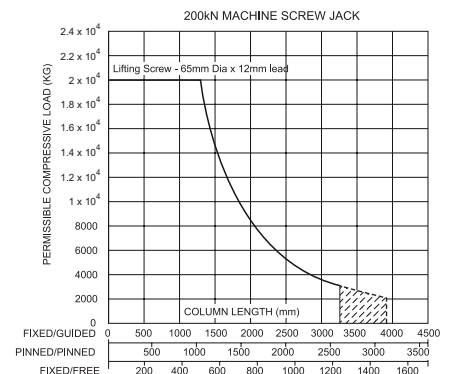
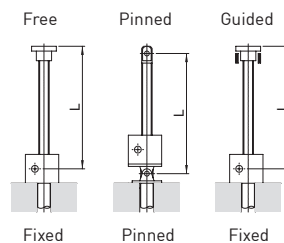
Inverted EMR0200-J00



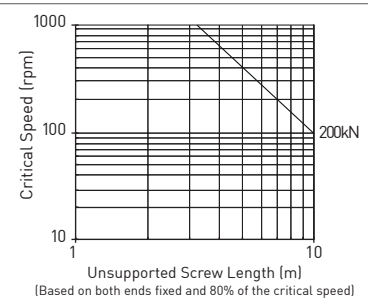
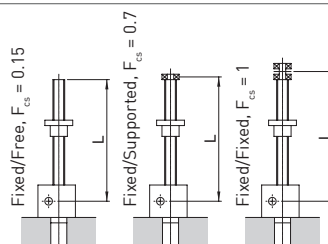
Performance

Column Strength

Model		EMT0200 EMR0200	
Capacity (kN)		200	
Sustaining Capacity (kN)	Standard 316 Lifting Screw	Tension	132
	Duplex Lifting Screw	Compression	200
Operating Capacity (kN)	Standard 316 Worm Shaft	66	
	Duplex or Plated Worm Shaft with 316 Screw	Tension	132
		Compression	200
	Duplex or Plated Worm Shaft with Duplex Screw	200	
Lifting Screw	Diameter (mm)	65	
	Lead	Option	1 2
		mm	12 24
Gear Ratio Option 1	Gear Ratio	8:1	
	Screw Jack Static Efficiency	0.181	0.279
	Screw Jack Dynamic Efficiency	0.242	0.357
Gear Ratio Option 2	Gear Ratio	24:1	
	Screw Jack Static Efficiency	0.116	0.178
	Screw Jack Dynamic Efficiency	0.169	0.250



Critical Screw Speed



Note: All dimension in millimetres unless otherwise stated. Designs subject to change without notice