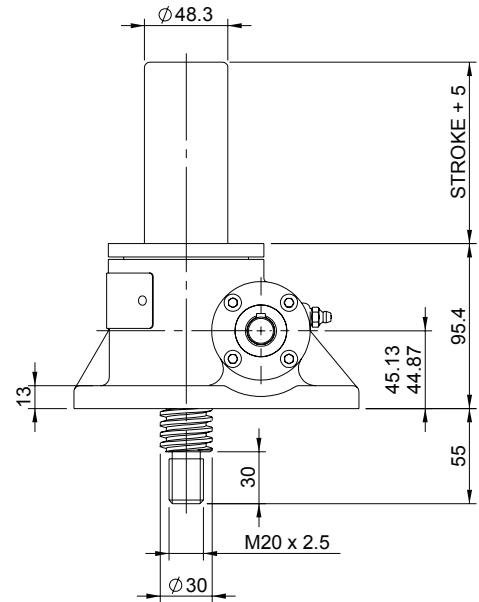
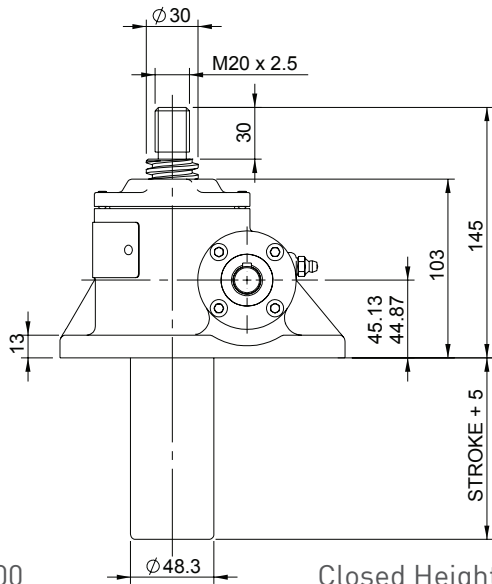
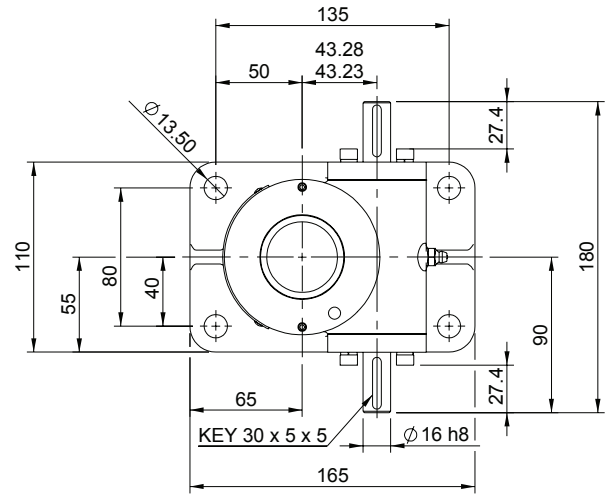
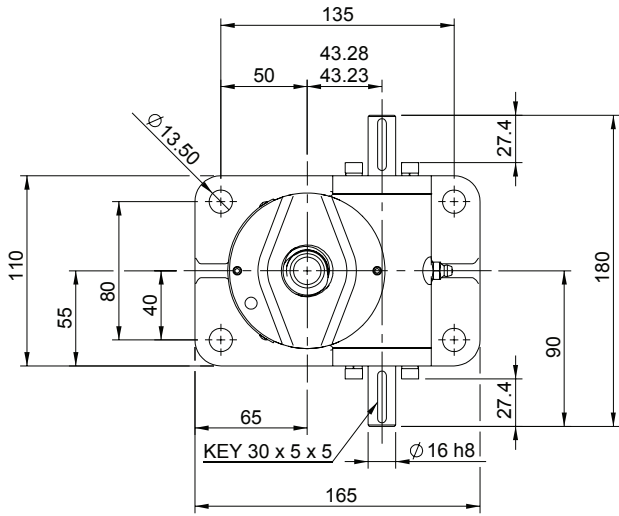


Upright EMT0025-V00

Inverted EMT0025-J00



EMT0025-V00

Closed Height



Translating Screw

EMR0025-V00



Rotating Screw

Threaded End

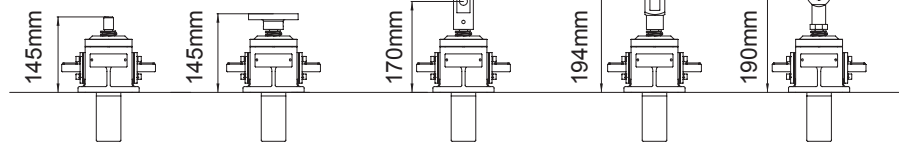
Top Plate

Clevis End

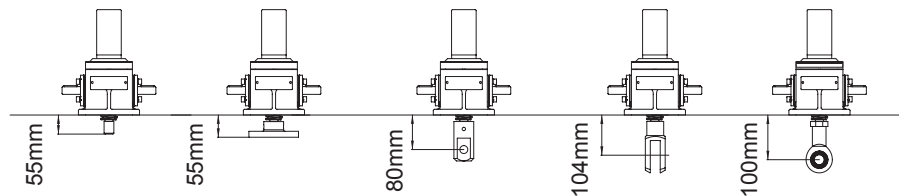
Fork End

Rod End

Upright



Inverted



Threaded End

Top Plate

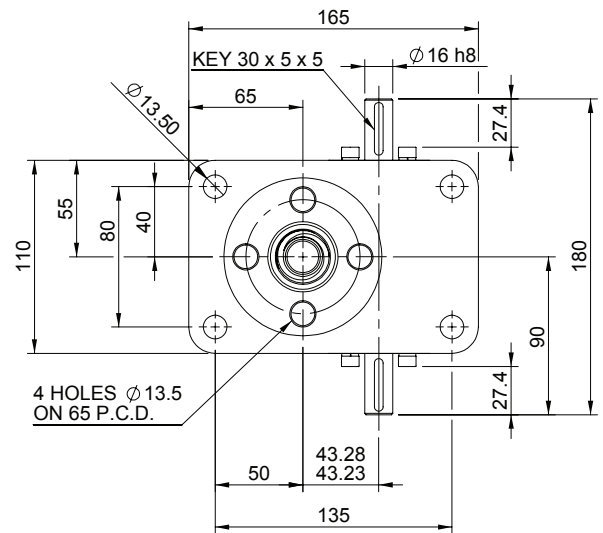
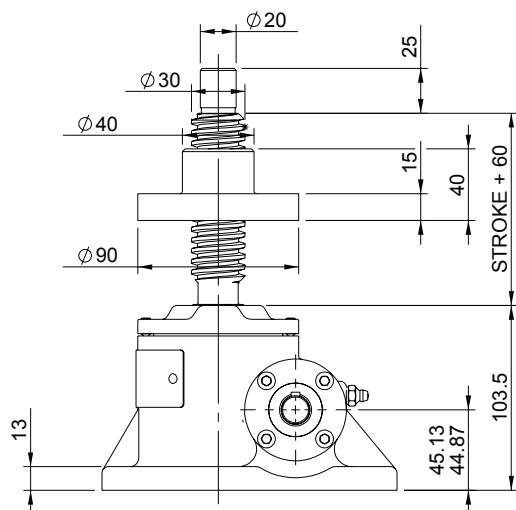
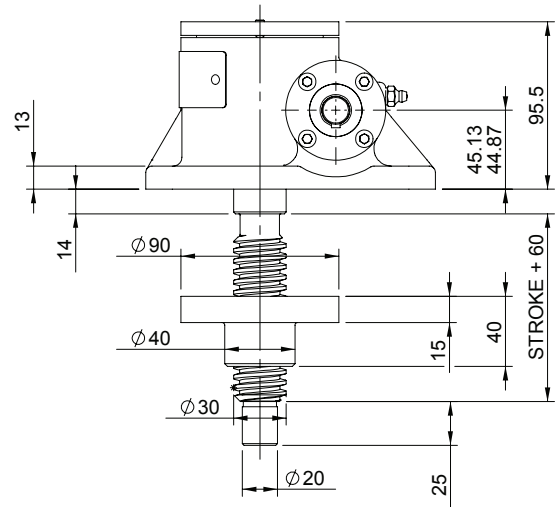
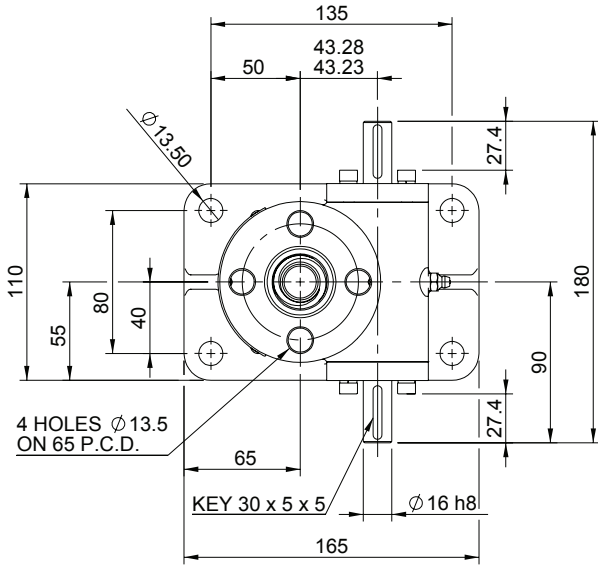
Clevis End

Fork End

Rod End

Upright EMR0025-V00

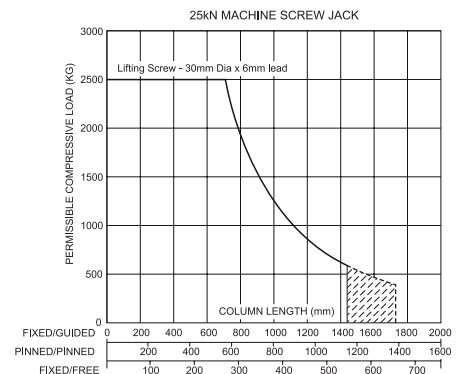
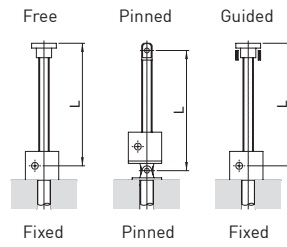
Inverted EMR0025-J00



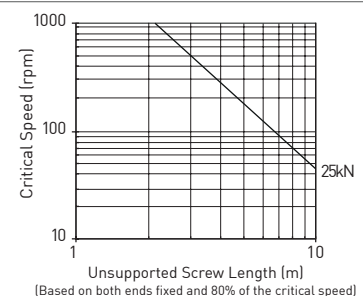
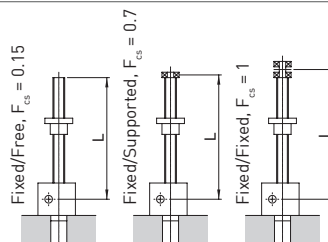
Performance

Column Strength

Model		EMT0025 EMR0025	
Capacity (kN)		25	
Sustaining Capacity (kN)	Standard 316 Lifting Screw	Tension	16.5
		Compression	25
Duplex Lifting Screw		25	
Operating Capacity (kN)	Standard 316 Worm Shaft		8.25
	Duplex or Plated Worm Shaft with 316 Screw	Tension	16.5
		Compression	25
	Duplex or Plated Worm Shaft with Duplex Screw		25
Lifting Screw	Diameter (mm)		30
	Lead	Option	1 2
		mm	6 12
Gear Ratio Option 1	Gear Ratio		6:1
	Screw Jack Static Efficiency		0.201 0.302
	Screw Jack Dynamic Efficiency		0.264 0.383
	Gear Ratio		24:1
Gear Ratio Option 2	Screw Jack Static Efficiency		0.115 0.171
	Screw Jack Dynamic Efficiency		0.167 0.242



Critical Screw Speed



Note: All dimension in millimetres unless otherwise stated. Designs subject to change without notice