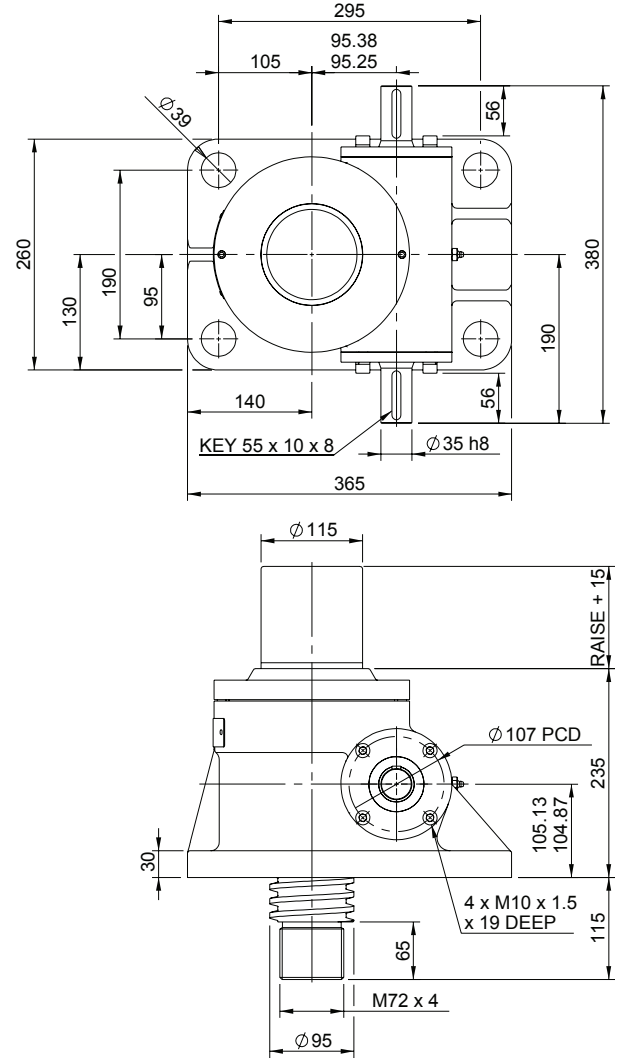
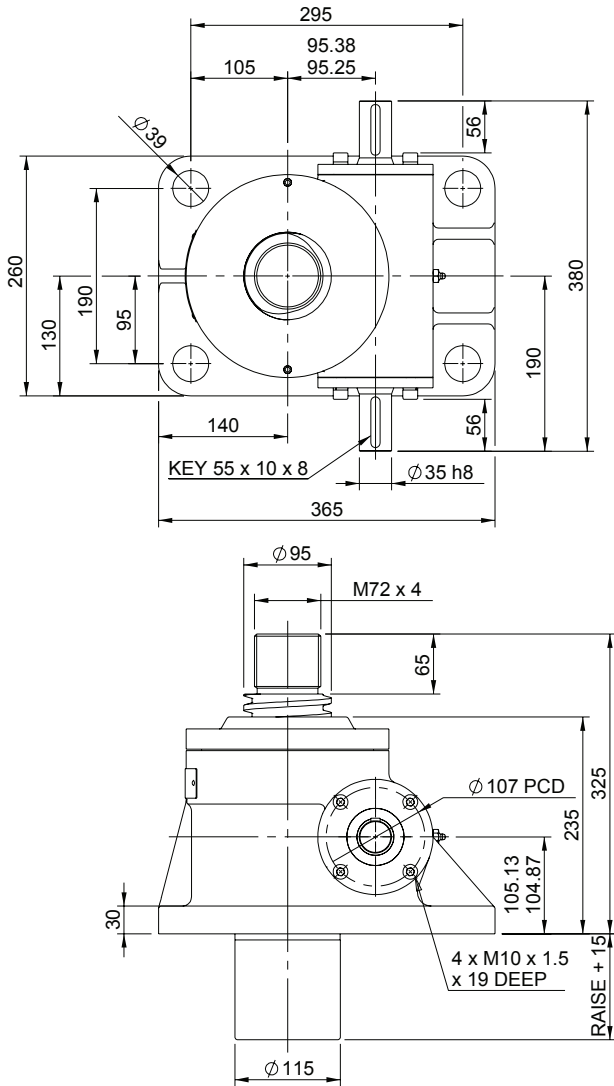


Upright EMT0300-V00

Inverted EMT0300-J00

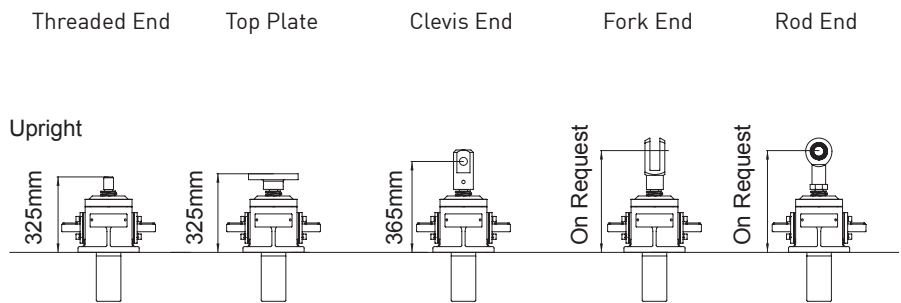


EMT0300-J00

Closed Height



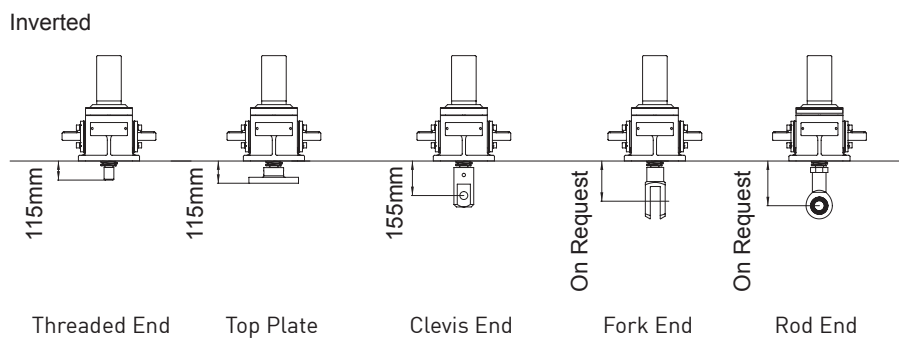
Translating Screw



EMR0300-V00

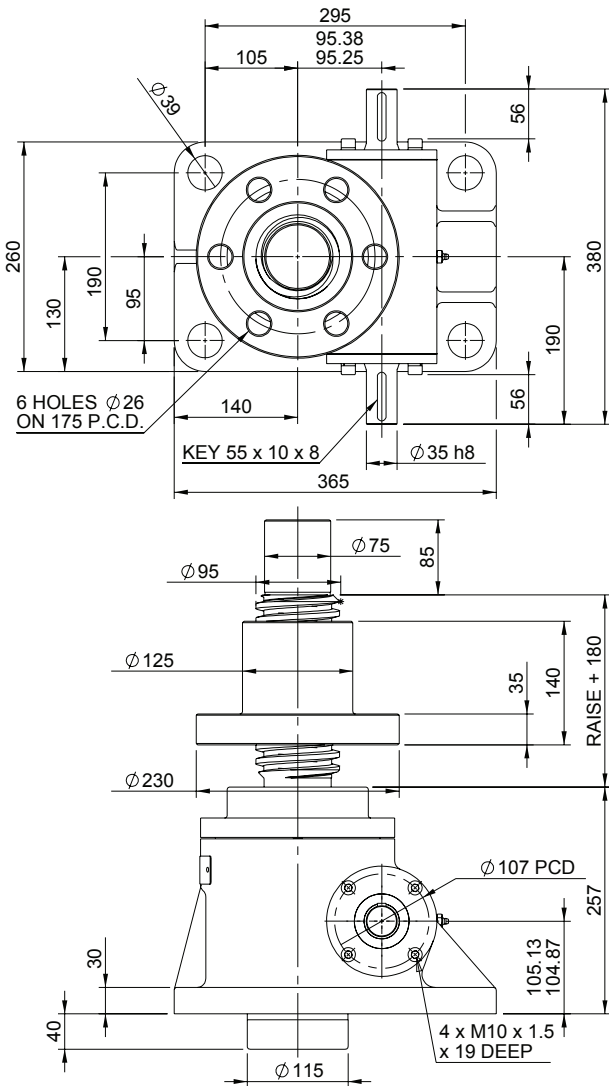


Rotating Screw

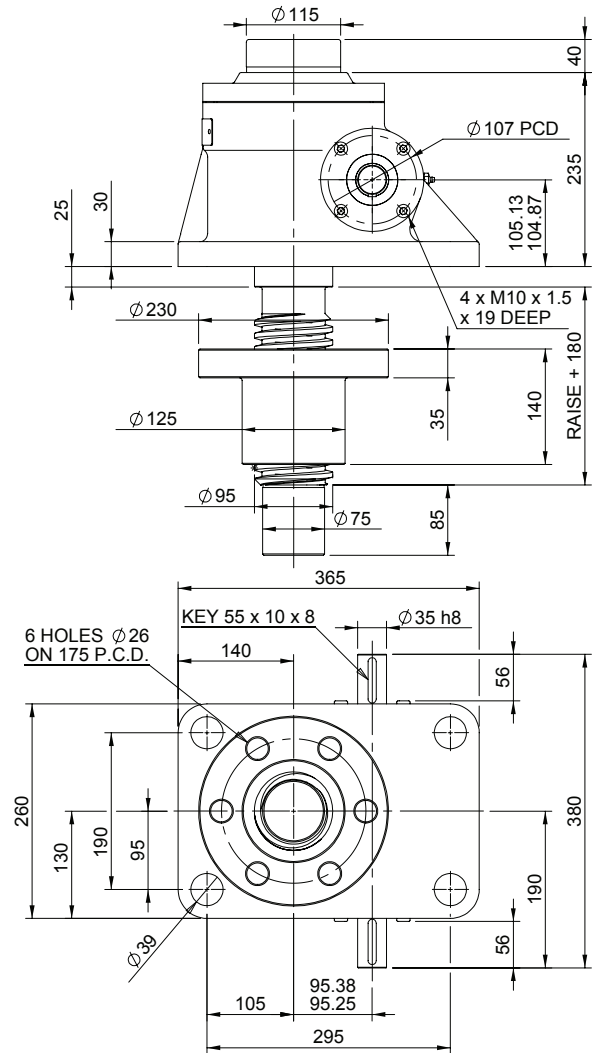


Note: All dimension in millimetres unless otherwise stated. Designs subject to change without notice

Upright EMR0300-V00



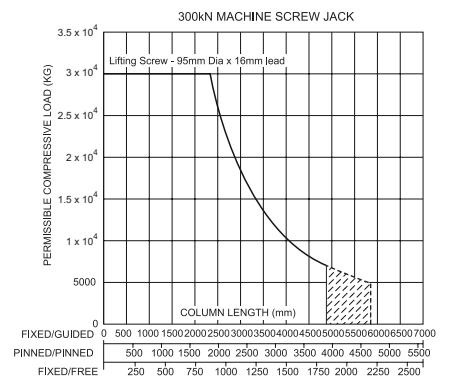
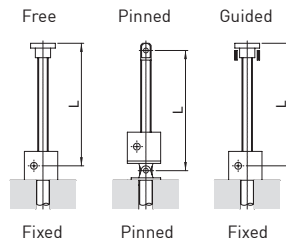
Inverted EMR0300-J00



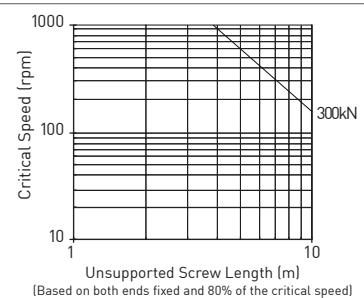
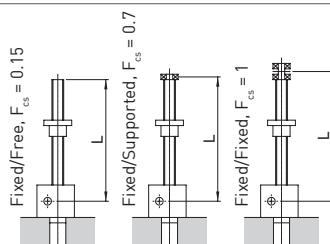
Performance

Model		EMT0300 EMR0300	
Capacity (kN)		300	
Sustaining Capacity (kN)	Standard 316 Lifting Screw	Tension	200
	Duplex Lifting Screw	Compression	300
Operating Capacity (kN)	Standard 316 Worm Shaft	100	
	Duplex or Plated Worm Shaft with 316 Screw	Tension	200
		Compression	300
Duplex or Plated Worm Shaft with Duplex Screw		300	
Lifting Screw	Diameter (mm)	95	
	Lead	Option 1	16
Option 2		32	
Gear Ratio Option 1	Gear Ratio	10 2/3:1	
	Screw Jack Static Efficiency	0.149	0.232
	Screw Jack Dynamic Efficiency	0.205	0.308
Gear Ratio Option 2	Gear Ratio	32:1	
	Screw Jack Static Efficiency	0.084	0.131
	Screw Jack Dynamic Efficiency	0.128	0.192

Column Strength



Critical Screw Speed



Note: All dimension in millimetres unless otherwise stated. Designs subject to change without notice