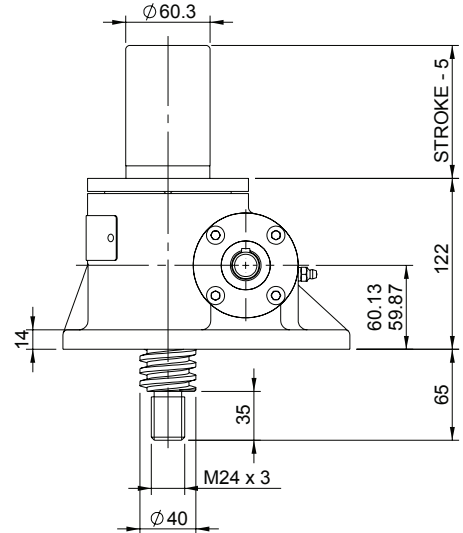
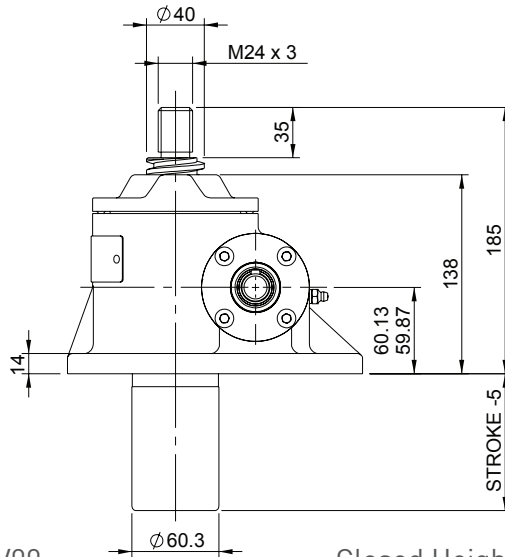
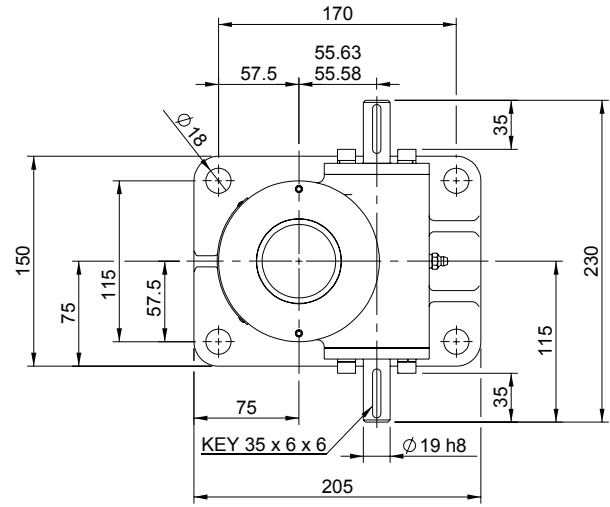
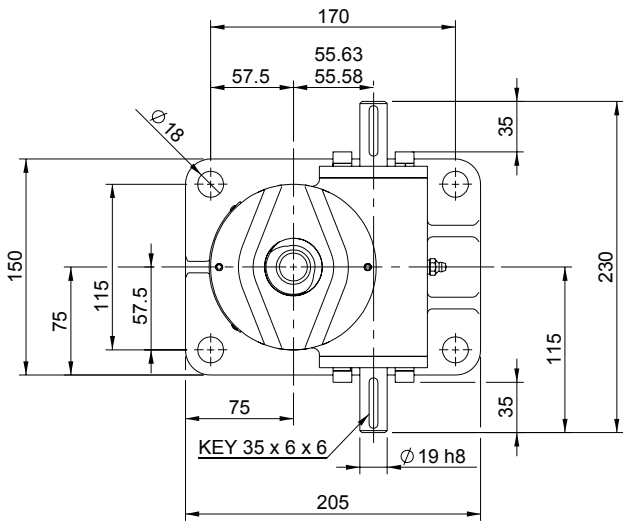


Upright EMT0050-V00

Inverted EMT0050-J00



EMT0050-V00

Closed Height

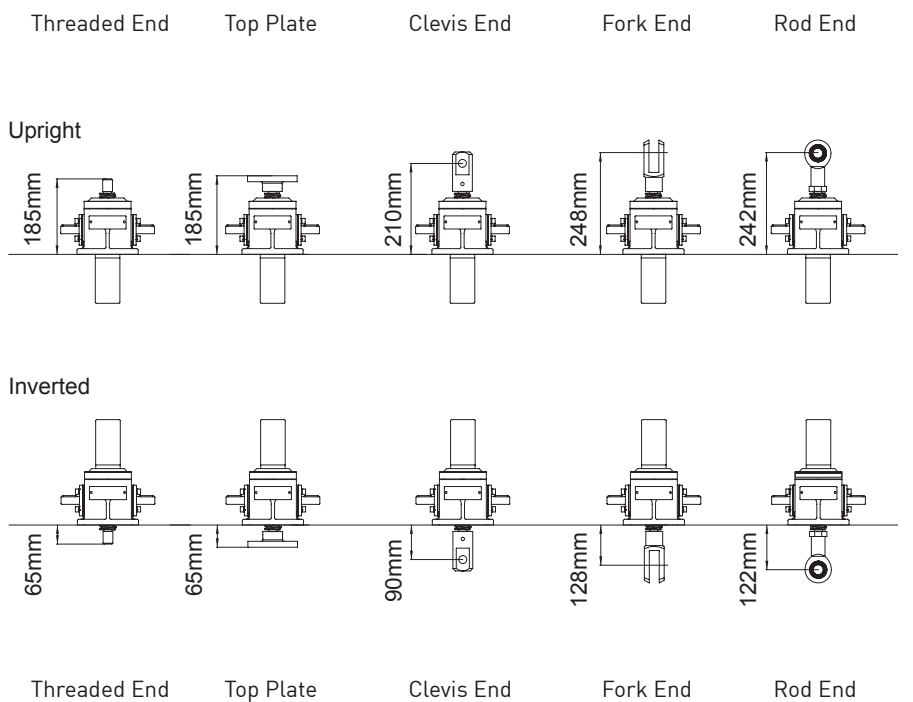


Translating Screw

EMR0050-V00

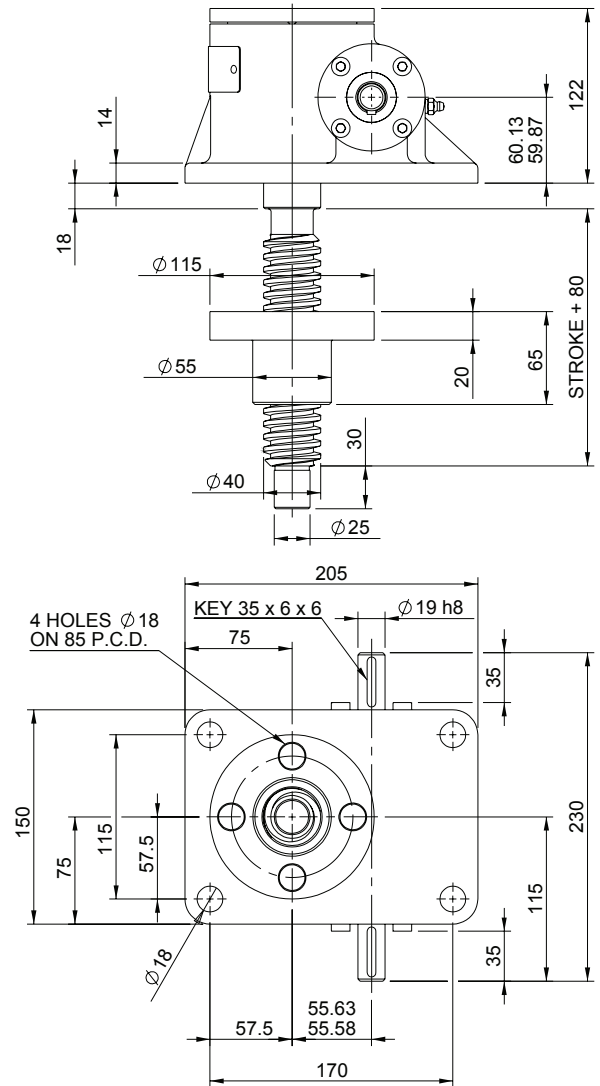
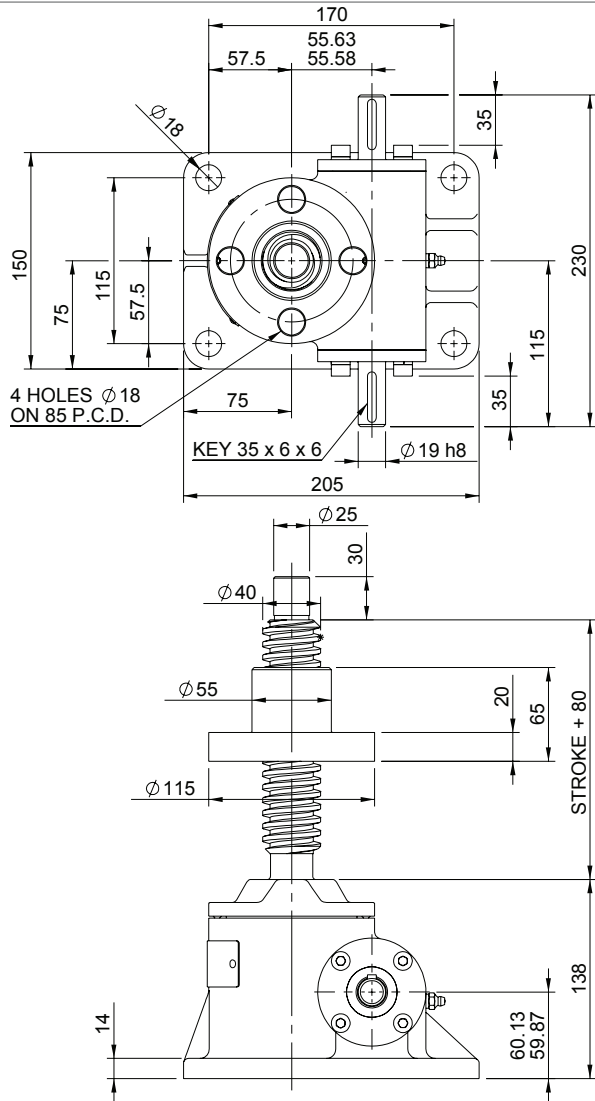


Rotating Screw



Upright EMR0050-V00

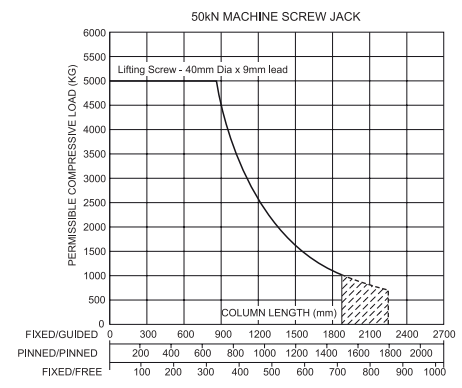
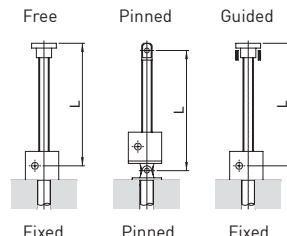
Inverted EMR0050-J00



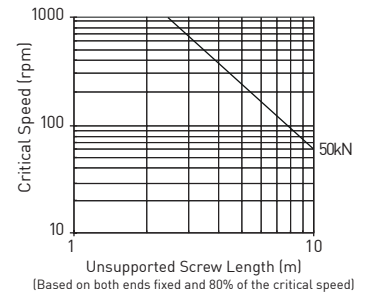
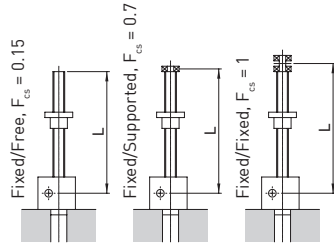
Performance

Column Strength

Model		EMT0050 EMR0050	
Capacity (kN)		50	
Sustaining Capacity (kN)	Standard 316 Lifting Screw	Tension	33
	Duplex Lifting Screw	Compression	50
Operating Capacity (kN)	Standard 316 Worm Shaft		16.5
	Duplex or Plated Worm Shaft with 316 Screw	Tension	33
		Compression	50
Duplex or Plated Worm Shaft with Duplex Screw		50	
Lifting Screw	Diameter (mm)	40	
	Lead	Option	1 2
		mm	9 18
Gear Ratio Option 1	Gear Ratio		6:1
	Screw Jack Static Efficiency		0.213 0.314
	Screw Jack Dynamic Efficiency		0.281 0.398
Gear Ratio Option 2	Gear Ratio		24:1
	Screw Jack Static Efficiency		0.117 0.172
	Screw Jack Dynamic Efficiency		0.172 0.244



Critical Screw Speed



Note: All dimension in millimetres unless otherwise stated. Designs subject to change without notice