

S-SERIES

Translating Screw Jack 50kN

Performance

Screw Jack Model ⁴		S-050		
Capacity	kN	50		
Lead Screw ¹	Diameter (mm)	40		
	Lead (mm)	9	18	
Gear Ratios	Option 1	6:1		
	Option 2	24:1		
	Option 3	8:1 (AOR)		
4 x Turns of worm for travel of lead screw	Option 1	6mm	12mm	
	Option 2	1.5mm	3mm	
	Option 3	4.5mm	9mm	
Maximum Input Power (kW)	Option 1	3.0		
	Option 2	0.550		
	Option 3	3.0		
Start up torque at full load (Nm) ²	Option 1	54	73	
	Option 2	24	33	
	Option 3	44	59	
Maximum Through Torque (Nm) ⁷	Option 1	168.0		
	Option 2	76.5		
	Option 3	168.0		
Static Efficiency ³	Option 1	0.222	0.325	
	Option 2	0.125	0.184	
	Option 3	0.206	0.302	
Dynamic Efficiency ³	Option 1	50rpm	0.281	0.398
	Option 1	750rpm	0.324	0.460
	Option 1	1500rpm*	0.337	0.477
	Option 2	50rpm	0.171	0.242
	Option 2	750rpm	0.238	0.337
	Option 2	1500rpm*	0.263	0.372
	Option 3	50rpm	0.264	0.374
	Option 3	750rpm	0.312	0.442
	Option 3	1500rpm*	0.328	0.465
Maximum Input Speed (rpm)	-	3000		
Gear Case Material	-	SG Iron		
Weight (kg) – stroke = 150mm	ST050	25.5		
	SR050	27.9		
Weight (kg) – per extra 25mm	ST050	0.24		
	SR050	0.19		

ST050 Closed Height

	Threaded End	Top Plate	Clevis End	Fork End	Rod End
Closed Height 'C'	192	192	217	257	251
Stroke (mm)	With Bellows Boots (B)				
0 - 300	192	206	217	257	251
301 - 600	206	206	231	271	265
601 - 1050	224	224	249	289	283
1051 - 1500	244	244	269	309	303
1501 - 1800	258	258	283	323	317

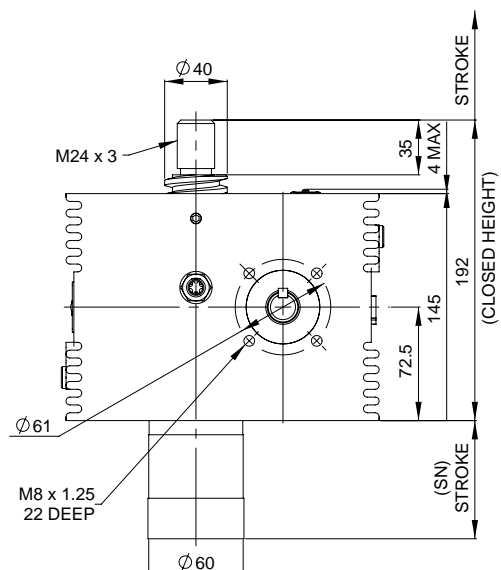
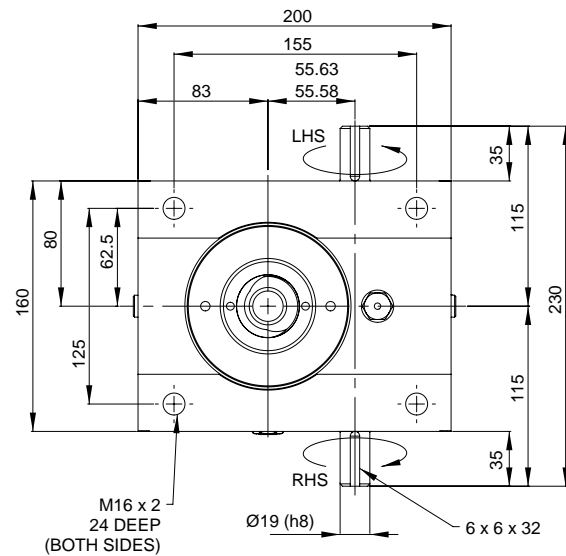
ST050 Stop Nut



Stop nut provides a full power mechanical stop at the end of the lead screw. To be used as a safety feature in emergency conditions.

SN = Stroke + 34mm

ST050



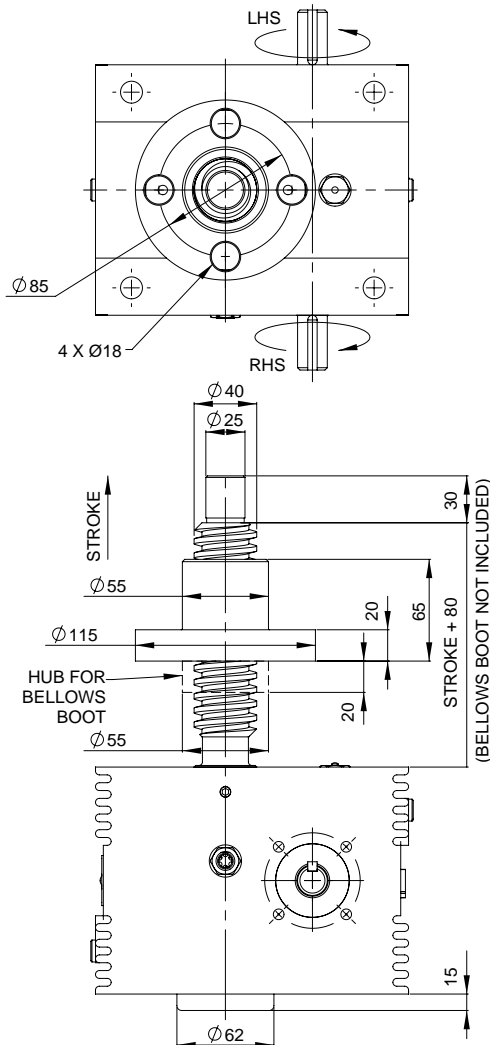
Note:

1. All dimension in millimetres unless otherwise stated.
2. Designs subject to change without notice.

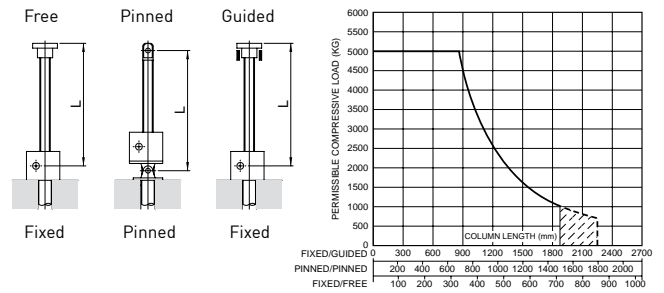
S-SERIES

Rotating Screw Jack 50kN

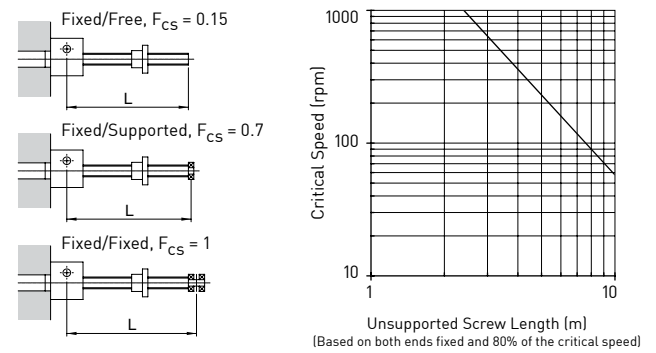
SR050



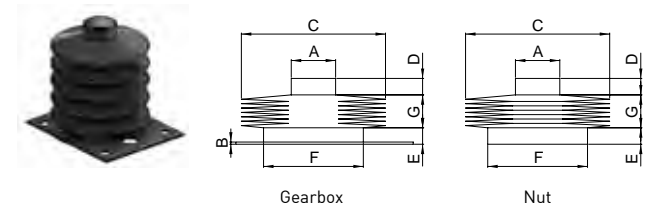
Column Strength



Critical Screw Speed



Bellows Boot



	ØA	B	ØC	D	E	ØF
ST050	50	2	140	10	10	50
SR050	55	2	140	10	15	50

Stroke	1 - 300	301 - 600	601 - 1050	1051 - 1500	1501 - 1800
G	14	28	46	66	80*

*control tapes fitted ØC=160

Accessories & Options

