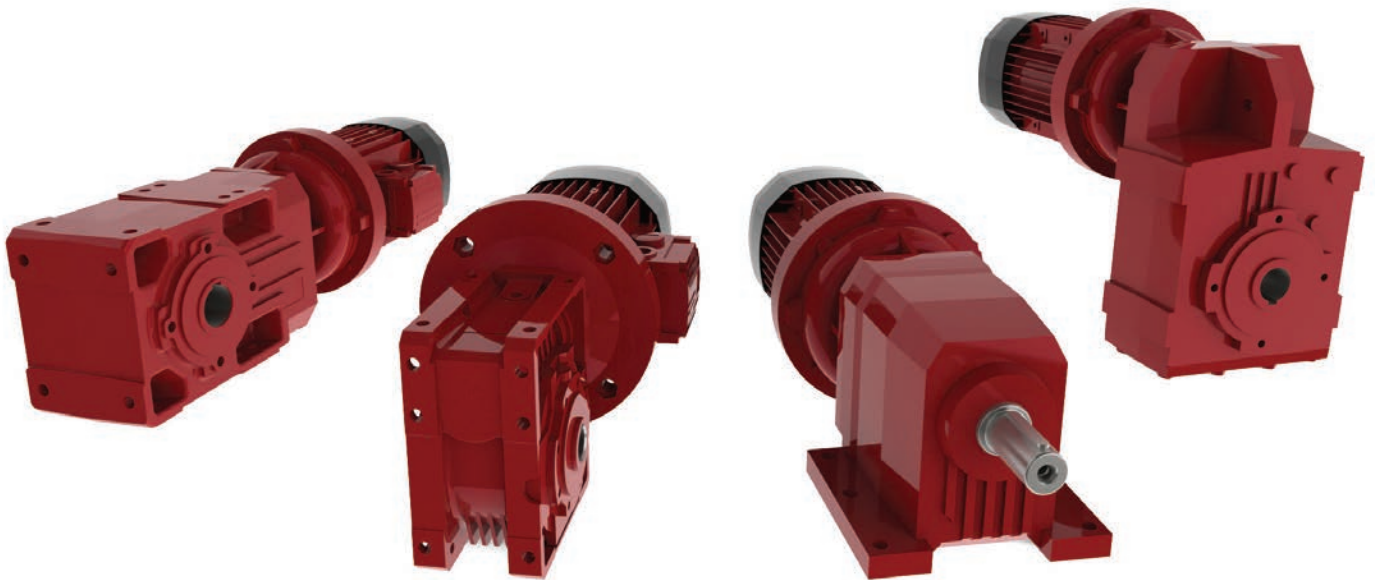


POWERJACKS

PRECISION ACTUATION



SYSTEM COMPONENTS
REDUCTION GEARBOXES

POWERJACKS

**POWER JACKS OFFERS
A WIDE RANGE OF
REDUCTION GEARBOXES
FOR SCREW JACK SYSTEM
BUILDING.**



Capability



OUR EXPERTISE HAS BEEN BUILT ON A HISTORY OF MORE THAN 100 YEARS OF ENGINEERING, CRAFTSMANSHIP, VISIONARY DESIGN, QUALITY MANUFACTURE AND CUSTOMER CARE.



Power Jacks is a manufacturing/engineering company specialising in the design and manufacture of actuation, lifting and positioning solutions for applications in Industrial Automation, Energy, Defence, Medical, Transport, and the Civil Engineering sectors.

Headquartered near Aberdeen in the UK, the company is the UK's largest screw jack manufacturing facility, that uses the latest engineering technologies to deliver quality products (BS EN ISO 9001) that offer reliability, performance and economy.

Power Jacks deliver this high quality service in a safe (OHSAS 18001) and environmentally friendly (ISO 14001) working environment thanks to the highly trained, flexible and motivated teams that work throughout the business driving the company to higher levels of performance.

We know our customers demand our engineering expertise to help find a solution for their applications. We take pride in designing and delivering the best solution using standard or special designs that help improve your business.

Our Vision is to become the partner of choice for our products globally

Our Mission is to provide high quality lifting & positioning solutions.

Global Reach

Power Jacks has local representation in 26 countries and supplies its products to more than 80 countries worldwide.



A global reach with a local service as we work closely with our customers to ensure the best solution for all their Electro-Mechanical solution applications.

- Headquarters & Factory
- Local Power Jacks Sales Offices
- Local Representative

A-series - Right Angled Helical Bevel Gearbox



Size	Torque [Nm]
A 05	100
A 10	150
A 20	250
A 30	410
A 35	600
A 41	850
A 50	1500
A 55	2000
A 60	2800
A 70	5000
A 80	8000
A 90	14000

Torque Range

100 Nm to 14000 Nm

Power Rating

0.22 kW to 150 kW (at 1400 rpm input)

Gear Ratios

5.4:1 to 1715:1

Output

- Foot and shaft mount - two bore options size
- Keyless shrink disc fitting
- Metric or Inch series solid output shaft
- Taper bushing
- Splined Hollow shaft to DIN 5480

Input

- IEC and NEMA motor adaptors
- Servo motor adaptors
- Metric or inch series solid input shaft

Main gear options

- Backstop
- Reinforced bearings for higher overhung load capacity
- Reduced backlash
- Taconite seals

AC Motors

- Integral motors and brake motors
- IEC motors and brake motors
- Single and dual speed motors

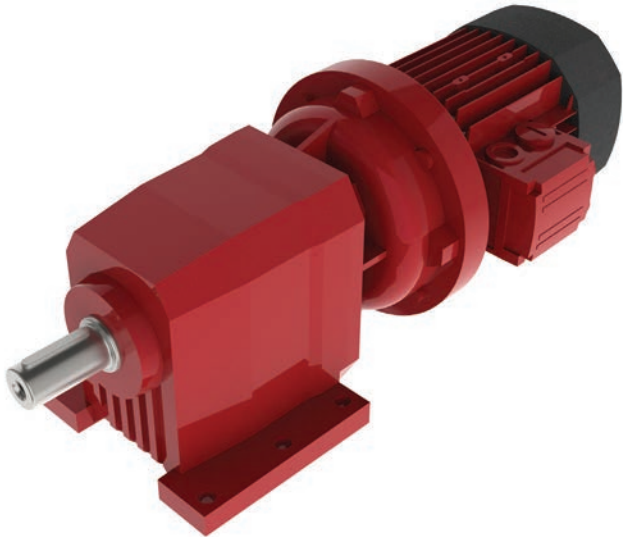
Main brake features

- DC and AC supply
- Fast brake engage/disengage through electronically controlled AC/DC rectifiers.

Main motor options

- Thermistors and thermostat sensors
- Separate supply forced ventilation
- Line driver and push-pull incremental encoder

C-series - In-Line Helical Gearbox



Size	Torque [Nm]
C 05	45
C 12	100
C 22	200
C 32	300
C 36	450
C 41	600
C 51	1000
C 61	1600
C 70	2300
C 80	4000
C 90	7200
C 100	12000

Torque Range

45 Nm to 12000 Nm

Power Rating

0.08 kW to 213 kW (at 1400 rpm input)

Gear Ratios

2.6:1 to 1481:1

Output

Foot and Flange mount

Metric or inch series solid output shaft

Input

IEC and NEMA motor adaptors

Servo motor adaptors

Metric or inch series solid input shaft

AC Motors

Integral motors and brake motors

IEC motors and brake motors

Single and dual speed motors

Main brake features

DC and AC supply

Fast brake engage/disengage through electronically controlled AC/DC rectifiers.

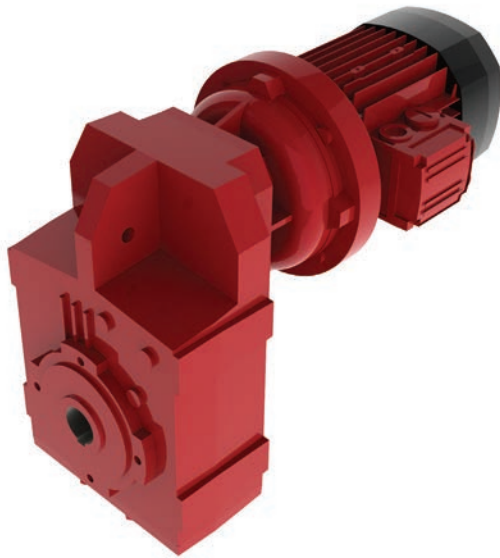
Main motor options

Thermistors and thermostat sensors

Separate supply forced ventilation

Line driver and push-pull incremental encoder

F-series - Parallel Shaft Helical Gearbox



Size	Torque [Nm]
F 10	140
F 20	250
F 25	400
F 31	600
F 41	1100
F 51	1800
F 60	2900
F 70	5000
F 80	8000
F 90	14000

Torque Range

140 Nm to 14000 Nm

Power Rating

0.17 kW to 125 kW (at 1400 rpm input)

Gear Ratios

6.4:1 to 2099:1

Output

Keyed hollow shaft - two bore options per size

Keyless shrink disc fitting

Plug-in solid output shaft as an option

Input

IEC and NEMA motor adaptors

Servo motor adaptors

Metric or inch series solid input shaft

AC Motors

Integral motors and brake motors

IEC motors and brake motors

Single and dual speed motors

Main brake features

DC and AC supply

Fast brake engage/disengage through electronically controlled AC/DC rectifiers.

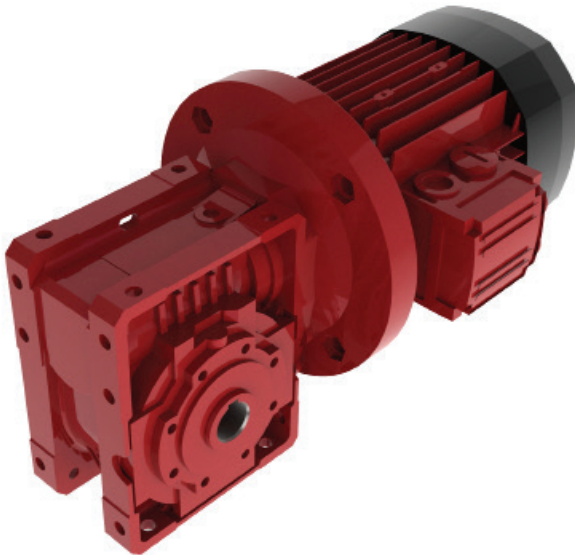
Main motor options

Thermistors and thermostat sensors

Separate supply forced ventilation

Line driver and push-pull incremental encoder

VF & W - Series - Worm Gearbox



Size	Torque [Nm]
VF 27	13
VF 30	24
VF 44	55
VF 49	88
VF 63	190
VF 75	320
VF 86	440
VF 110	830
VF 130	1500
VF 150	2000
VF 185	3600
VF 210	5000
VF 250	7100

Torque Range

13 Nm to 71000 Nm

Power Rating

0.04 kW to 75 kW (at 1400 rpm input)

Gear Ratios

7:1 to 10000:1

Output

Keyed hollow shaft
 Plug-in solid output shaft
 Torque limiter as an option

Input

IEC motor adaptors
 Solid input shaft

AC Motors

Integral motors and brake motors
 IEC motors and brake motors
 Single and dual speed motors

Main brake features

DC and AC supply
 Fast brake engage/disengage through
 electronically controlled AC/DC rectifiers.

Main motor options

Thermistors and thermostat sensors
 Separate supply forced ventilation
 Line driver and push-pull incremental encoder

POWERJACKS

PRECISION ACTUATION

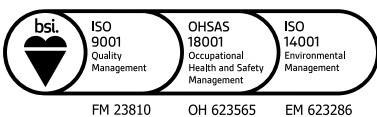
Power Jacks specialises in the design and manufacture of precision linear actuation, positioning and lifting equipment.

Our products are supplied globally across many sectors including Industrial Automation, Energy, Transport, Defence and Civil.

Power Jacks Ltd
Kingshill Commercial Park
Prospect Road, Westhill
Aberdeenshire AB32 6FP
Scotland (UK)
Tel: +44 (0)1224 968968

www.powerjacks.com
sales@powerjacks.com

PJBSC-RG-EN-02



All information in this document is subject to change without notice. All rights reserved by Power Jacks Limited.
May not be copied in whole or in part. ©Power Jacks Limited 2018, Aberdeenshire, Scotland, United Kingdom.

Follow Us  Facebook  LinkedIn  Twitter